



a. East wall, northern part



b. East wall, center part

Khafkhufu II, G 7150, exterior chapel

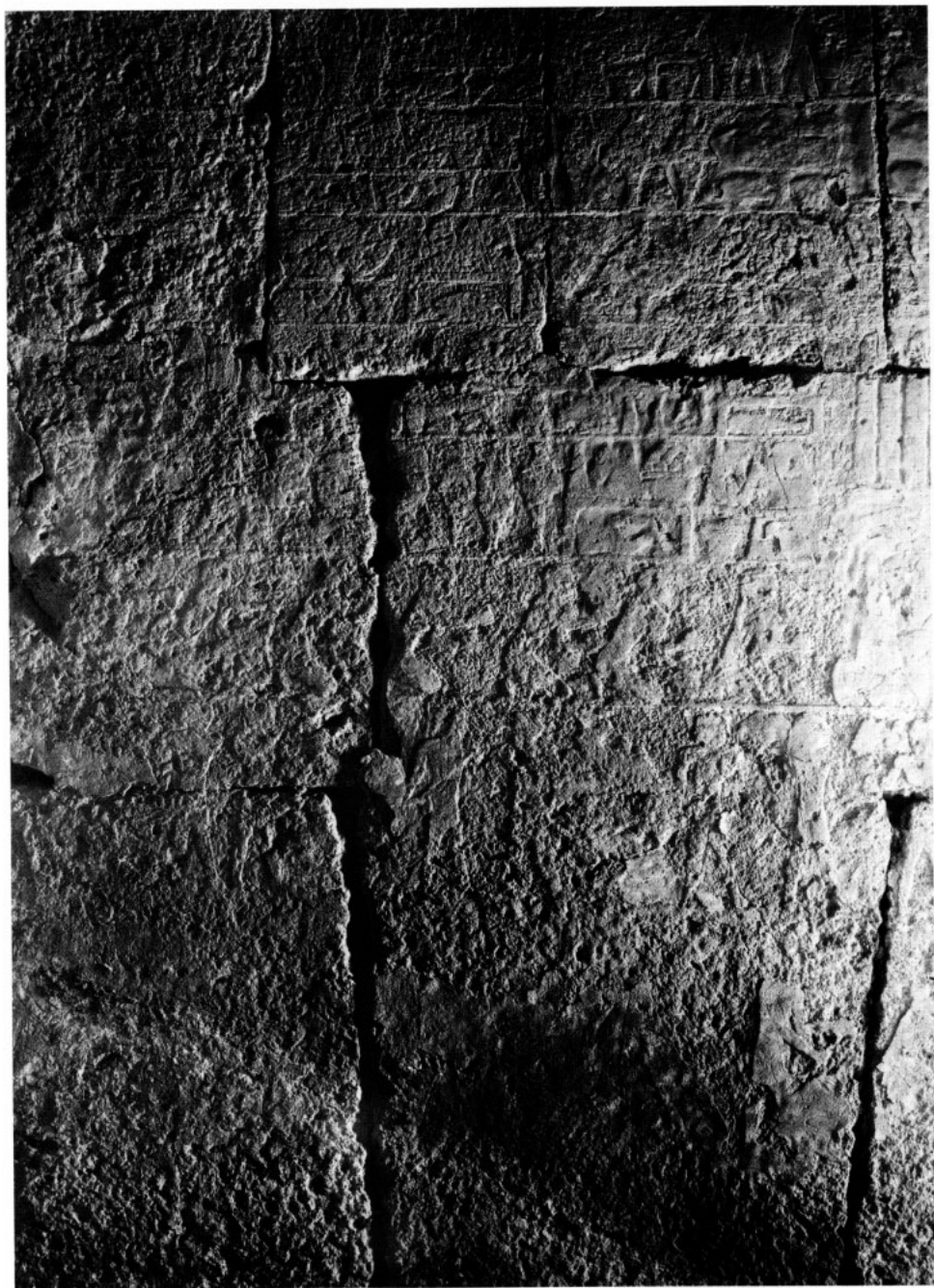


a. East wall, lower part of southern section



b. East wall, lower part of center section

Khafkhufu II, G 7150, exterior chapel



a. South wall, eastern part



b. South wall, western part

Kha:lhufu II, G 7150, exterior chapel



a. South wall, western end, detail



b. South wall, western end, detail

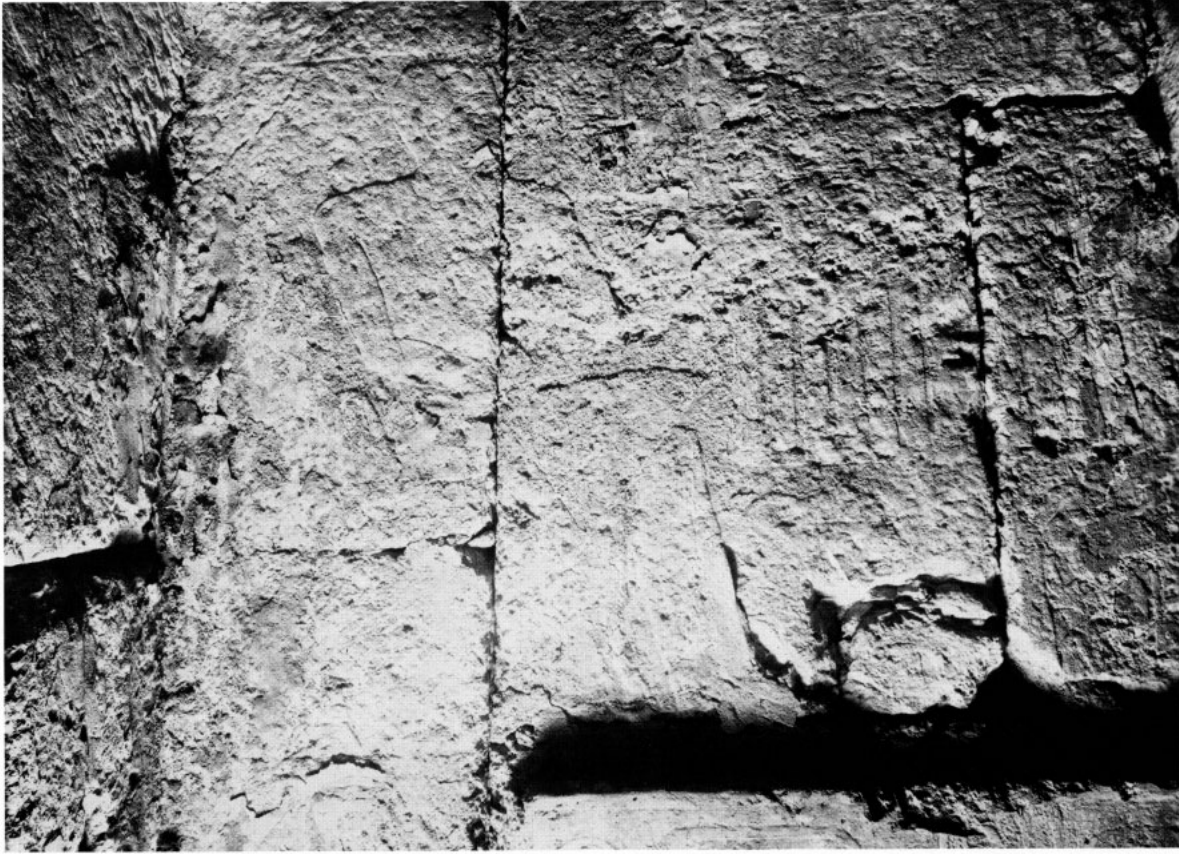
Khafkhufu II, G 7150, exterior chapel



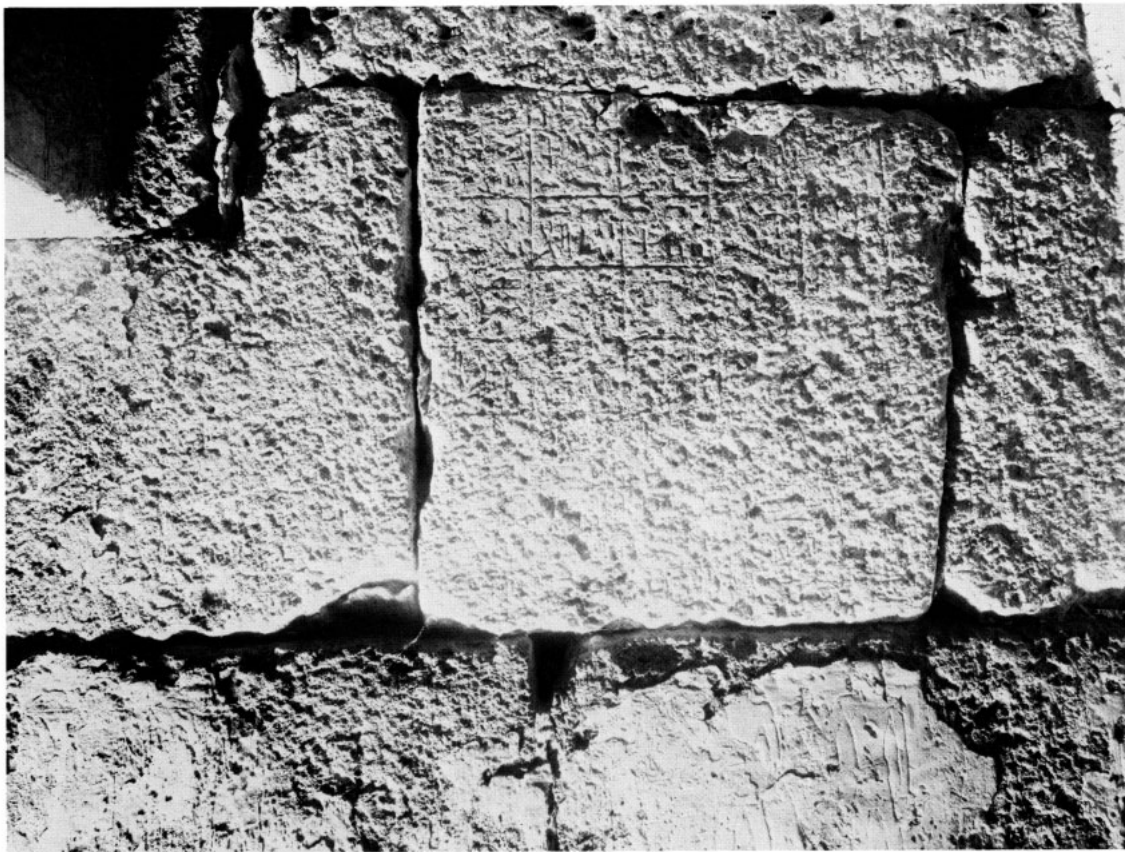
a. South wall, center



b. South wall, lower registers, right end



a. West wall, upper left, above false door panel



b. West wall, upper right, offering list

Khafkhufu II, G 7150, exterior chapel



a. West wall, false door, left side (to south)



b. West wall, false door, center

Khafkhufu II, G 7150, exterior chapel



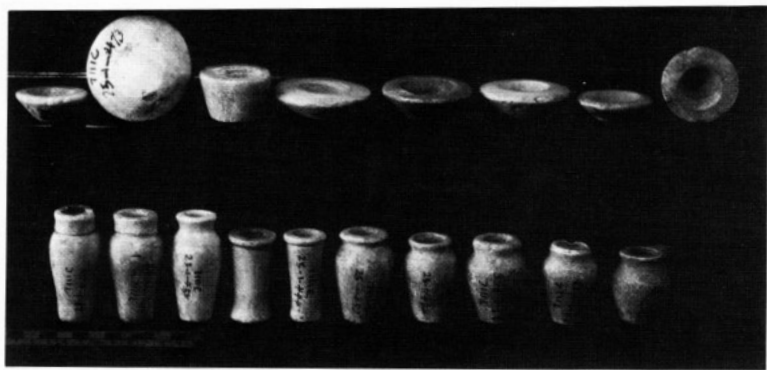
a. West wall, lower registers, center



b. West wall, lower registers, right (to north)

Kha :khufu II, G 7150, exterior chapel

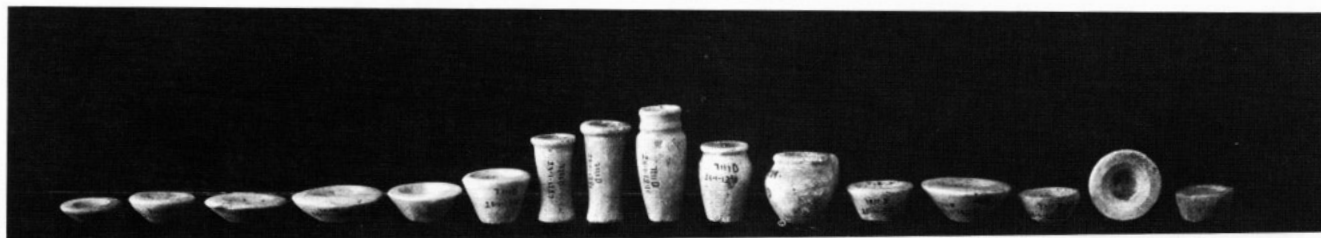




a. Alabaster model vessels from G 7111 C, cf. fig. 55



b. Limestone model canopic jar from G 7140 Z, 26-2-194, see fig. 62



c. Alabaster model vessels from G 7111 D, see fig. 55



d. Milk bowl, with incised text, G 7112 A, 25-1-311, see figs. 57, 69



e. Alabaster model vessels, G 7112 A: 25-1-181, 183, 185, 182



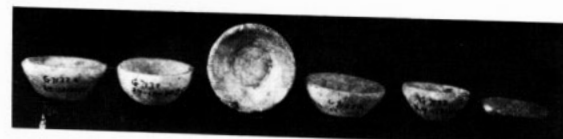
f. Pottery vessels, G 7112 A: 25-1-426, 222, 311, 1224, 1223; cf. fig. 57



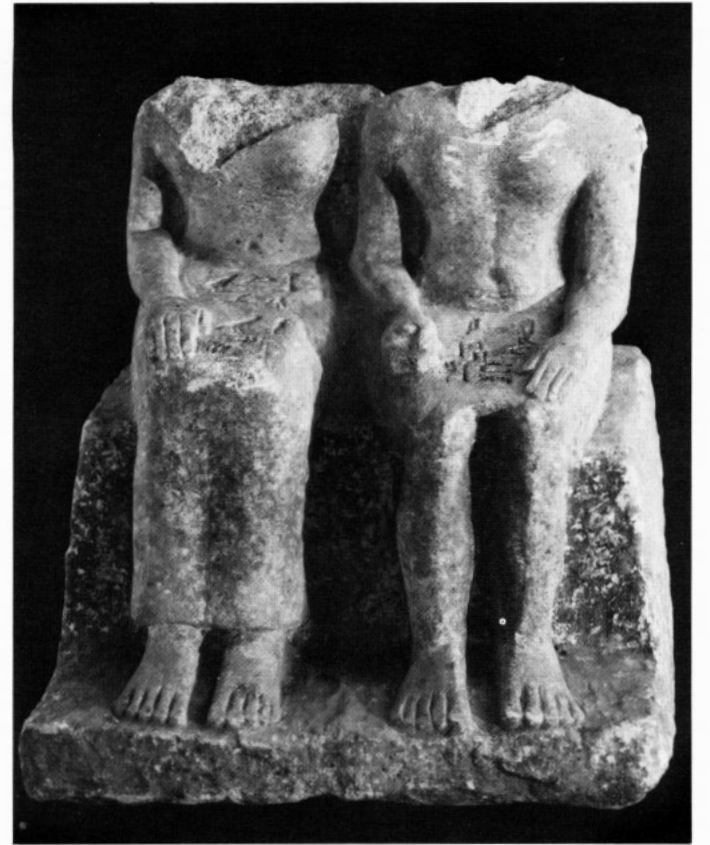
g. Alabaster model vessels, G 7133, shaft G 7130 X, cf. fig. 64



h. Limestone model vessels, G 7132 A: 24-12-543, 542, 1010, 1000, 1008, 1002; cf. fig. 60



i. Limestone model vessels, G 7132 A: 24-12-1028, 1025, 1014, 1033, 1048, 555; cf. fig. 60



a.-b. Limestone statue, lower part, from G 7130 X, 24-12-867 MFA; cf. fig. 69

c. Limestone pair statue, headless, from G 7140 Z, 23-3-124 MFA; cf. fig. 69



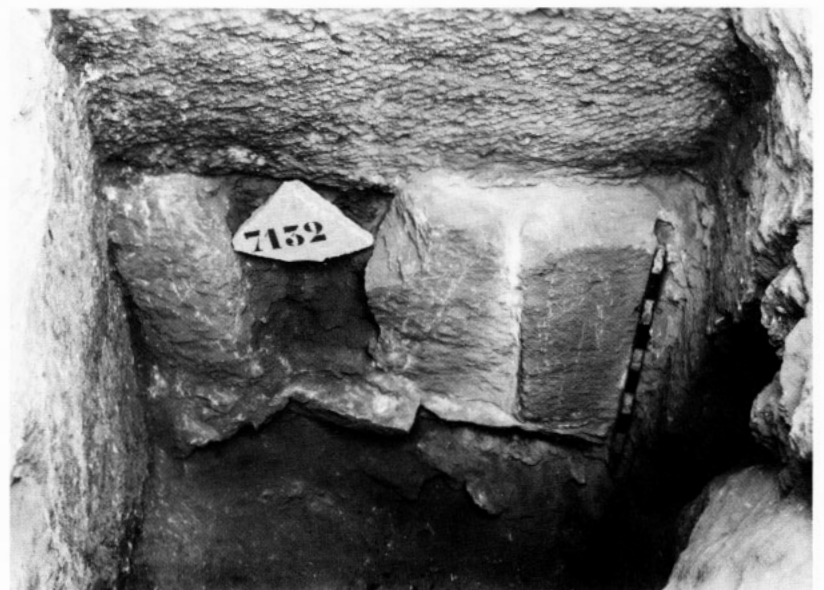
d. Copper tools, G 7112 A, 25-1-1168 to 1170



e. Copper tools, G 7112 A, 24-12-1005 to 1007



f. View down shaft, G 7112 A, looking west, cf. fig. 57



g. View down shaft, G 7132, looking west, cf. fig. 61