



a. Mastaba of Sekhemka (G 1029), looking northwest



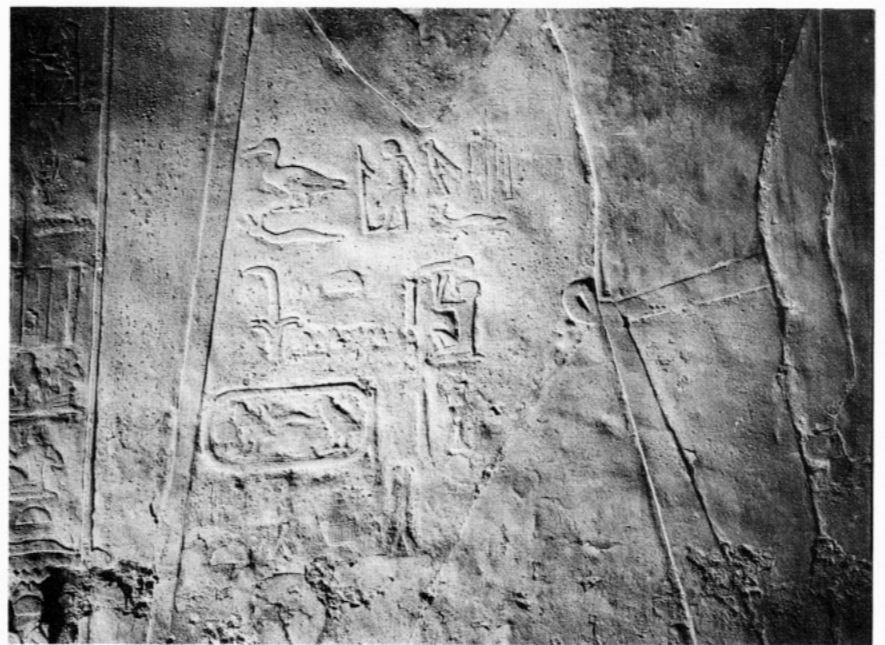
b. Mastaba of Sekhemka (G 1029), looking southwest



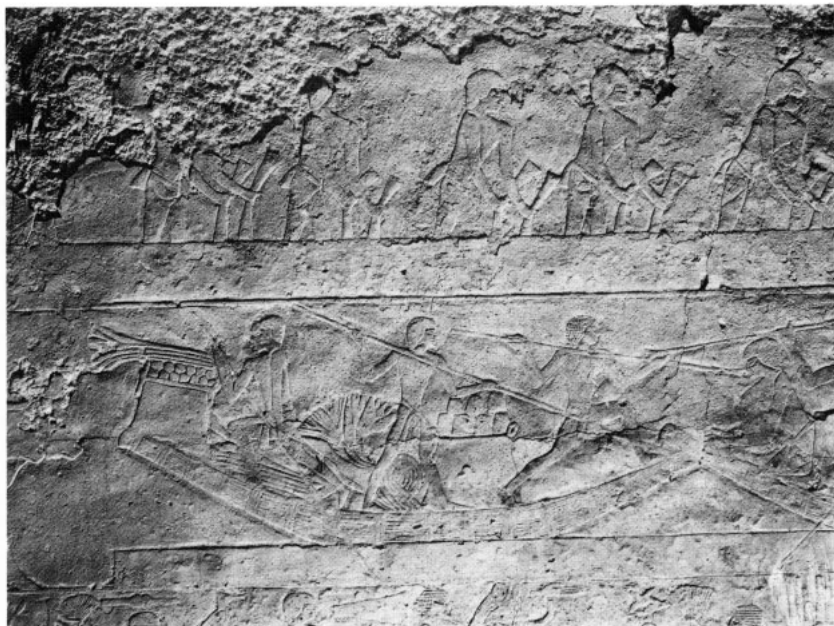
a. Sekhemka (G 1029), chapel, east wall, south end, top



b. Sekhemka (G 1029), chapel, east wall, south end



Sekhemka (G 1029), chapel, east wall, south end, detail



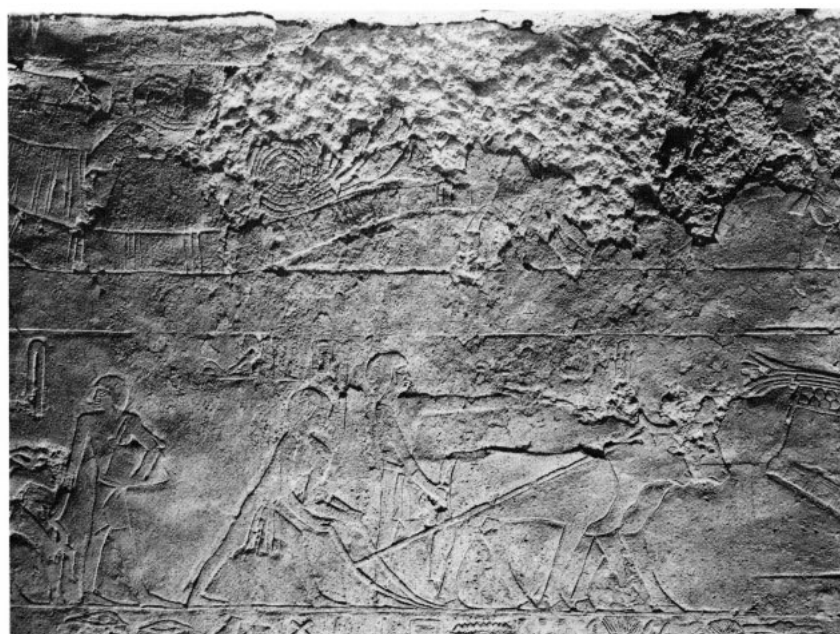
b. Registers 1-2, center right



a. Registers 1-2, right



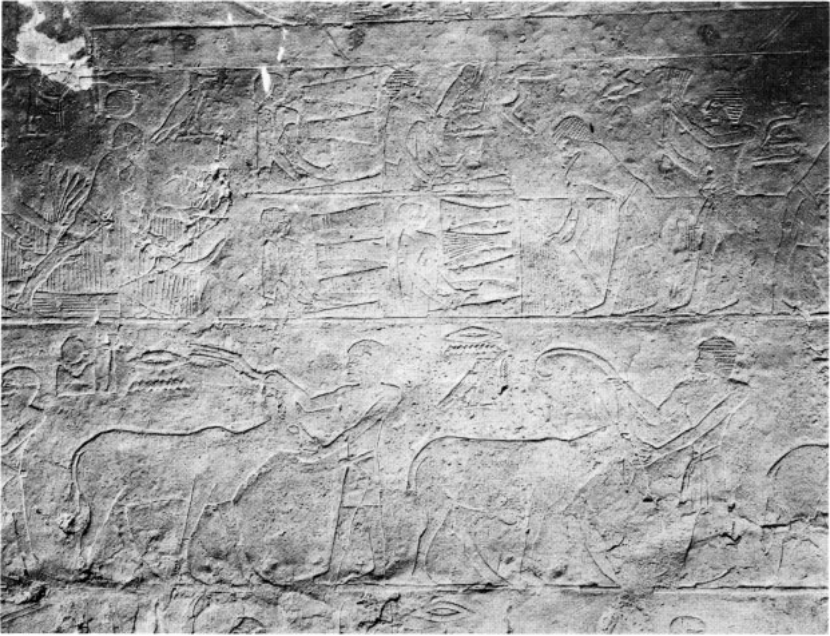
d. Registers 1-2, center left



c. Registers 1-2, center



e. Registers 1-2, left



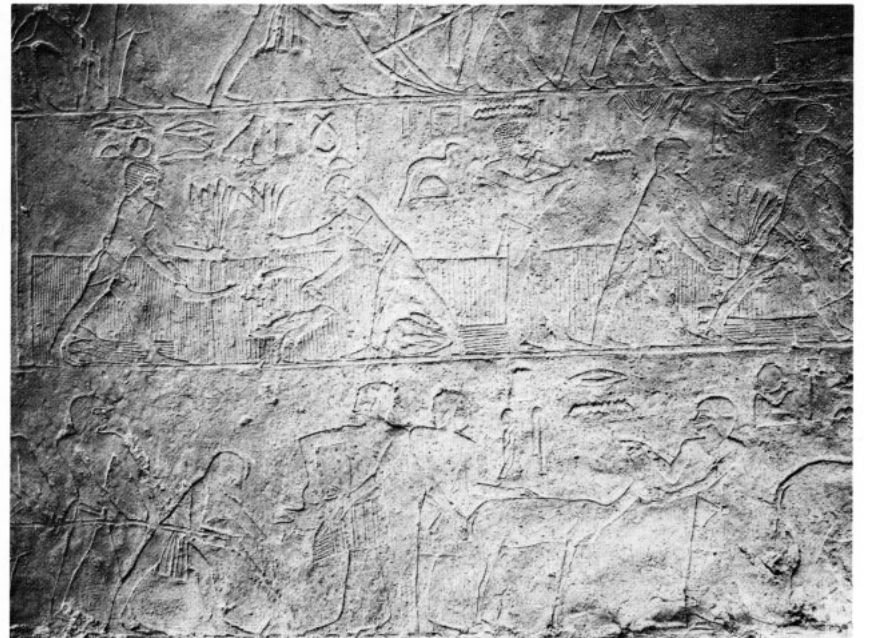
b. Registers 3-4, center right



a. Registers 3-4, right



d. Registers 3-4, center left



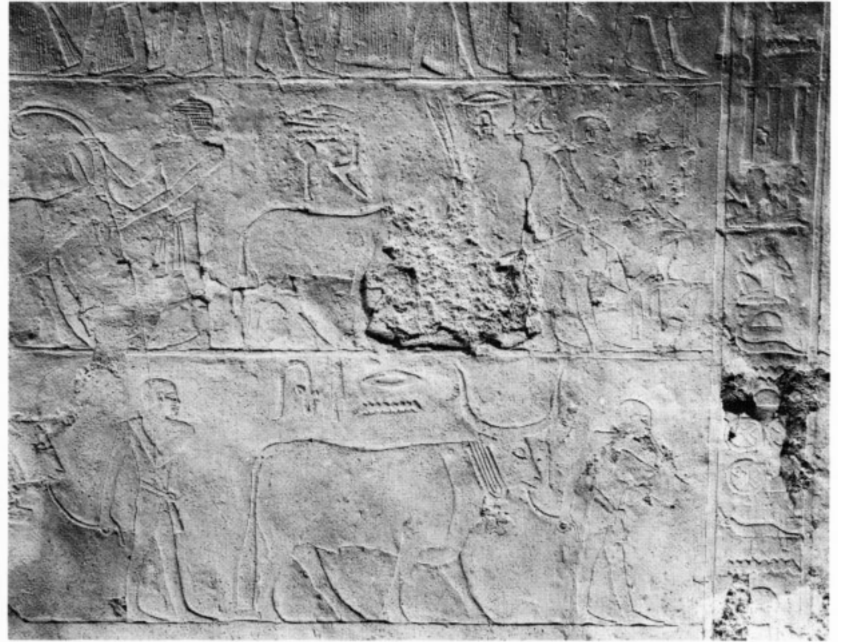
c. Registers 3-4, center



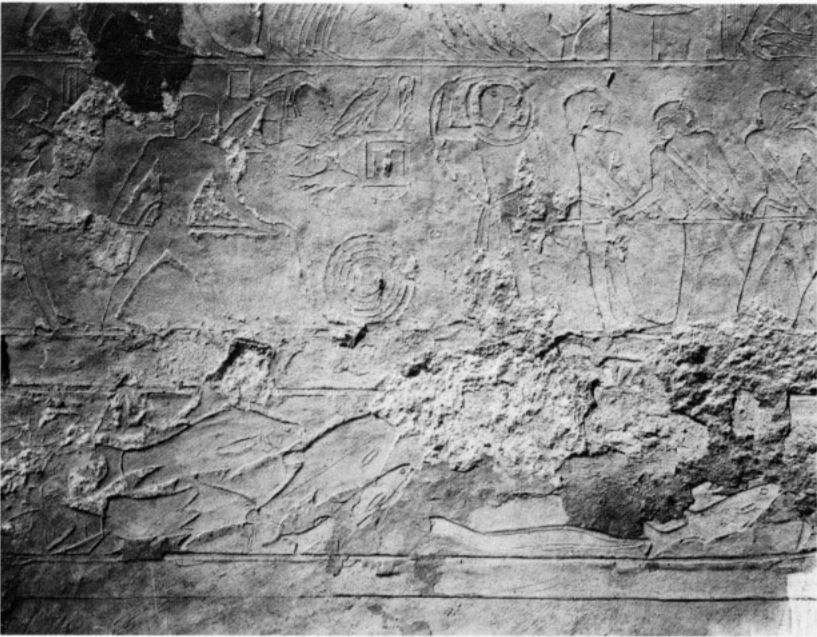
e. Registers 3-4, left



b. Registers 4-5, center right



a. Registers 4-5, right



d. Registers 4-5, center left



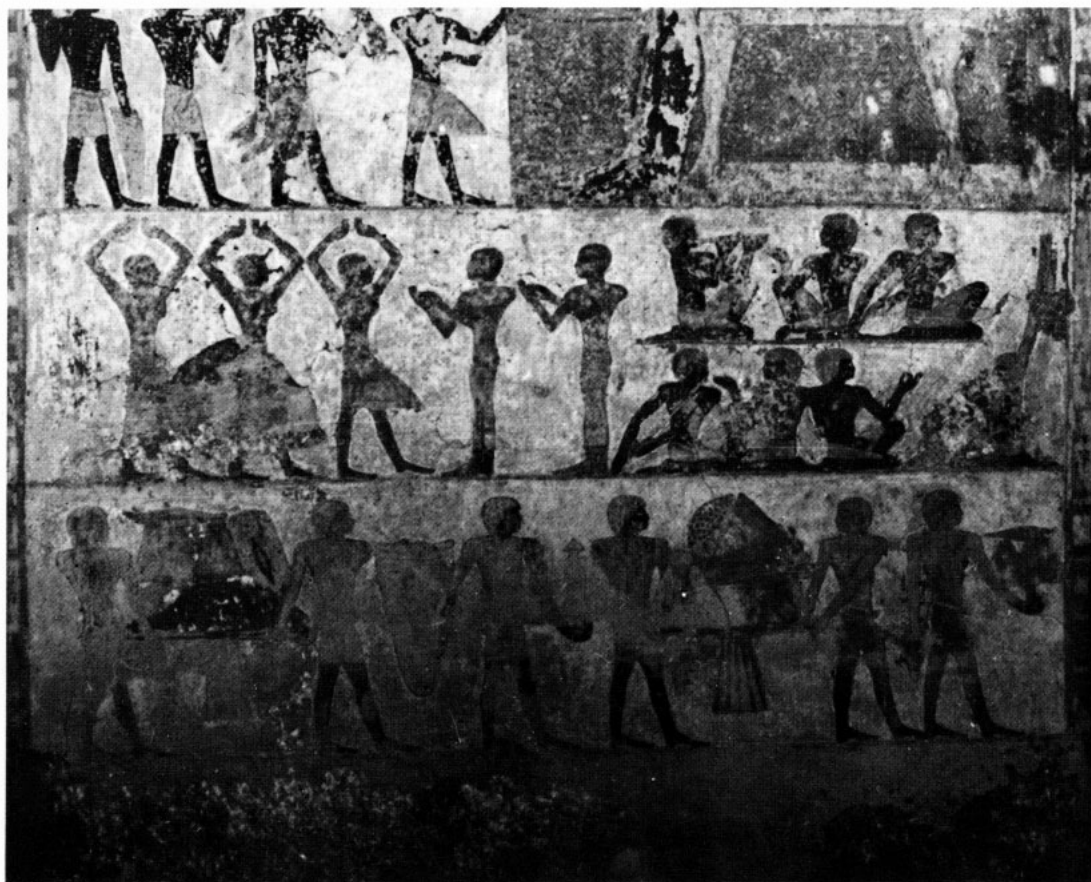
c. Registers 4-5, center



e. Registers 4-5, left



a. Sekhemka (G 1029), chapel, south wall



b. Sekhemka (G 1029), chapel, south wall, lower section



Sekhemka (G 1029), chapel, west wall, left section



a. Architrave element



b. Offering bearers, detail



c. Offering bearers, detail



a. Sekhemka (G 1029), west wall, tablet element



b. Sekhemka (G 1029), west wall, section to right



a. Burial chamber G 1029 A, looking south



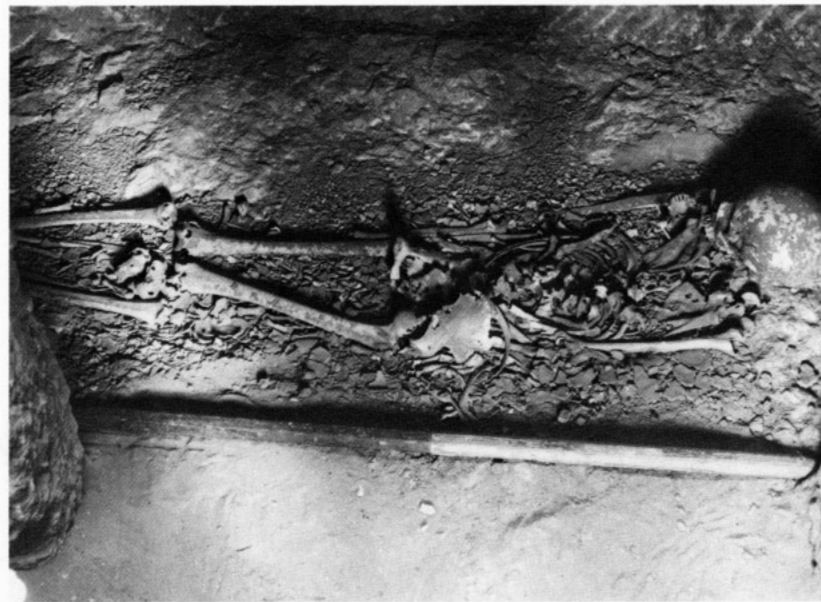
b. Shaft G 1029 B I



c. Burial chamber G 1029 B I



a. Blocking G 1029 B II

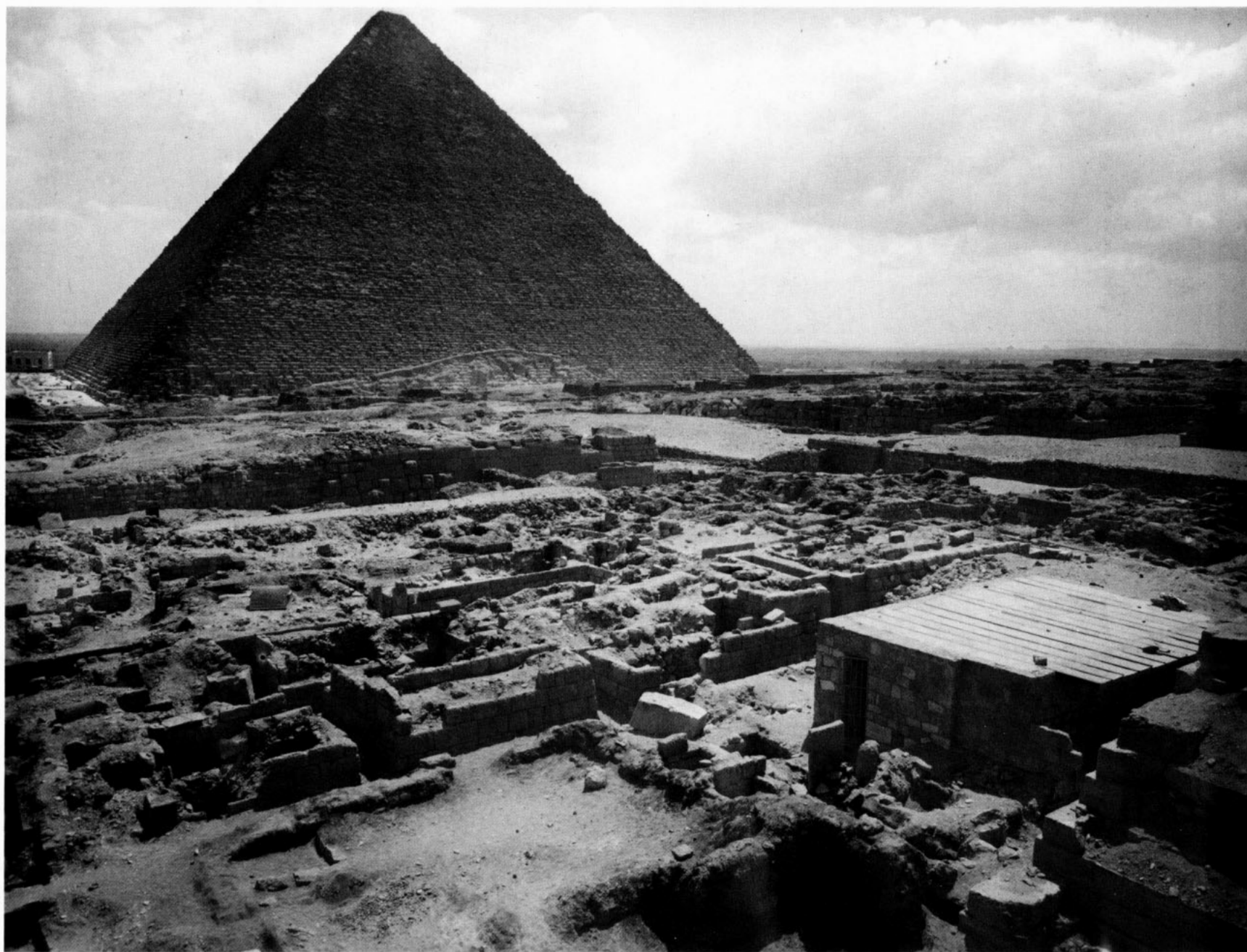


b. Burial G 1029 B II, looking west



c. Burial G 1029 C, looking west

Sekhemka (G 1029)



The Great Pyramid, looking southeast; mastaba of Tjetu (G 2001)
with modern roof and door in lower right corner