



a. Excavations of December, 1925. In foreground, G 6033 (left), G 6034 (right). Behind, G 6031, G 6032. In the rear, G 6022, G 6021. The sloping wall of G 6040 is at the far left. View to northwest (MFA B 5822)



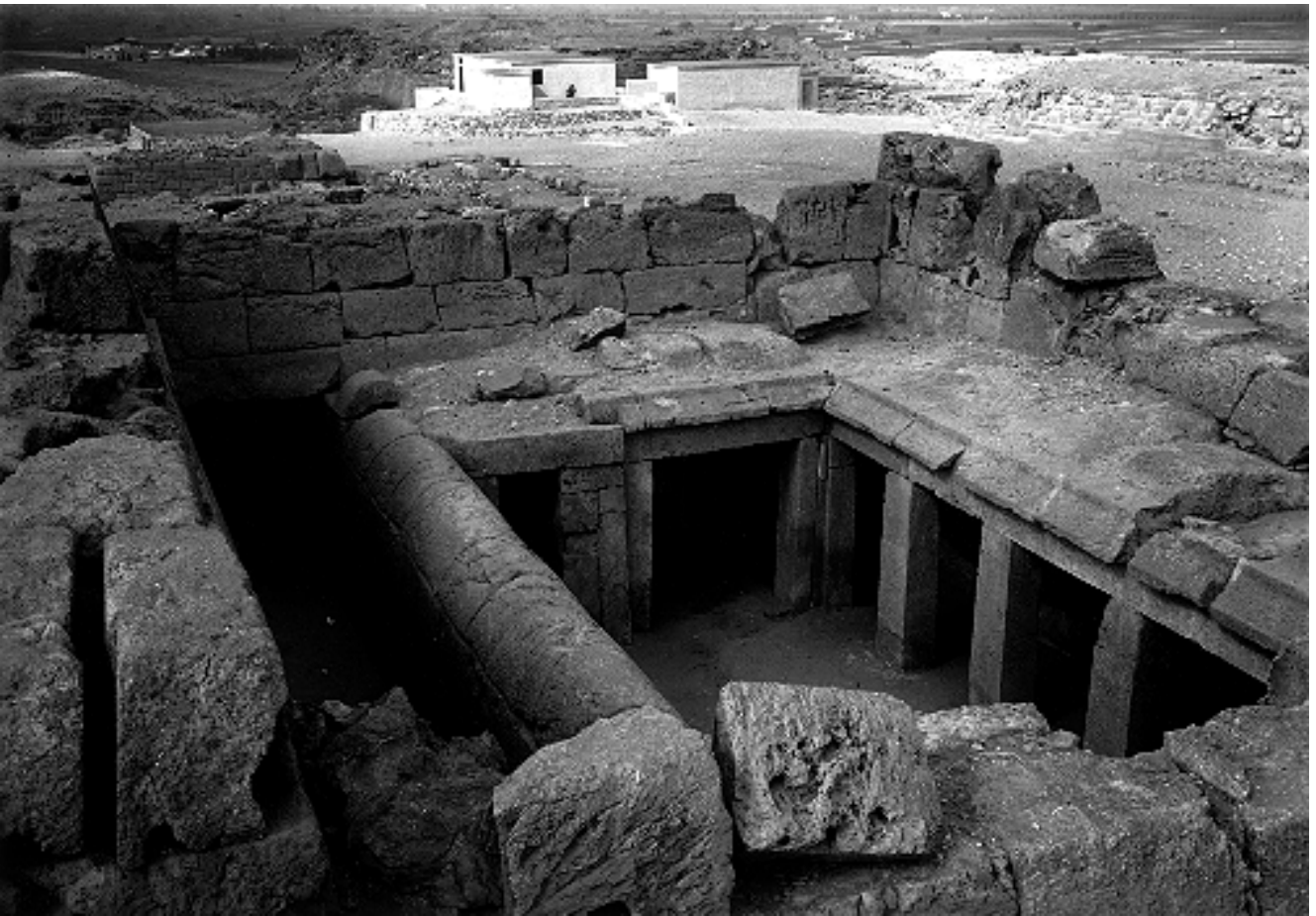
b. G 6040, traces of the processional ramp, leading to the top of the mastaba. Two stelae stand at the lowest end of the ramp, against its parapets (MFA B 7953)



a. G 6040, processional ramp (MFA B 5818)



b. G 6040, the eastern (left) stela at the foot of the processional ramp, text [5.11] (MFA B 7955)



a. G 6040, general view to northeast (MFA B 8947)



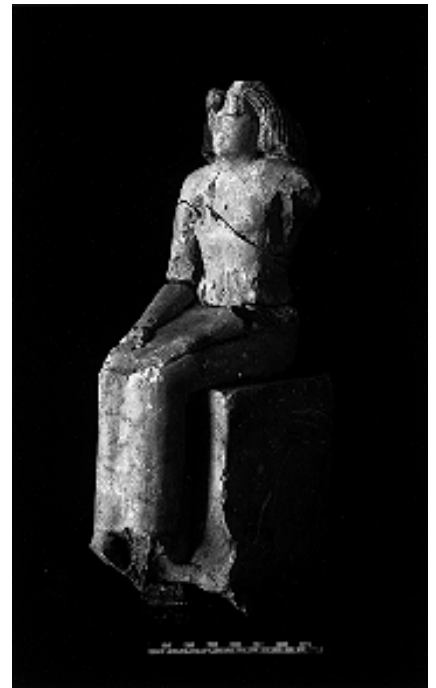
b. G 6040, limestone relief fragment 25-12-139,
texts [5.12- 5.14] (MFA A 4373)



a. G 6040 shaft "B", chamber as left by thieves (MFA B 5817)



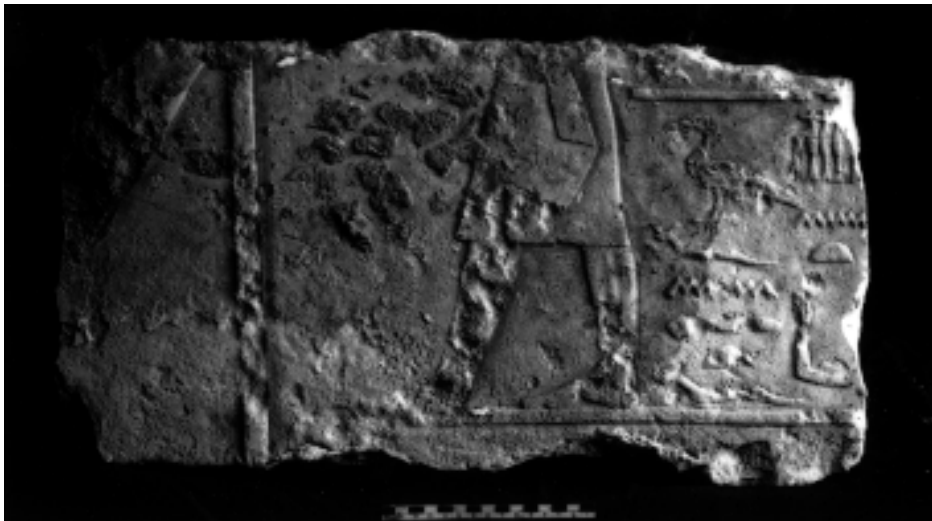
b. G 6040 shafts "C", "D", statuette fragments, 25-12-26/46/47 (MFA C 11115)



c. G 6040 shafts "C", "D", statuette fragments, 25-12-26/46/47 (MFA C 11115), three-quarter view (MFA 11116)



a. G 6042, pair statuette, 25-11-13 and 25-12-245 (MFA C 11117)



b. G 6052, fragment of limestone relief, text [5.18] (MFA B 5816)