



58a. 2091: upper right portion of the north wall. Two registers and one sub-register of animals are depicted with their herdsmen (a 6435)



58b. 2091: lower right portion of the north wall, with a register of men bringing cattle and below it a register of cranes (a 6437)



59a. 2091: lower part of the north pilaster. In two registers, three men bring a bull and an ibex into the tomb (a 6440)



59b. 2091: upper part of the north pilaster. Above, a gazelle nurses her calf, while below a man leads in a hyena (a 6013)



60a. 2091: upper part of the north pilaster. Detail of gazelle nursing her calf (a 6014)



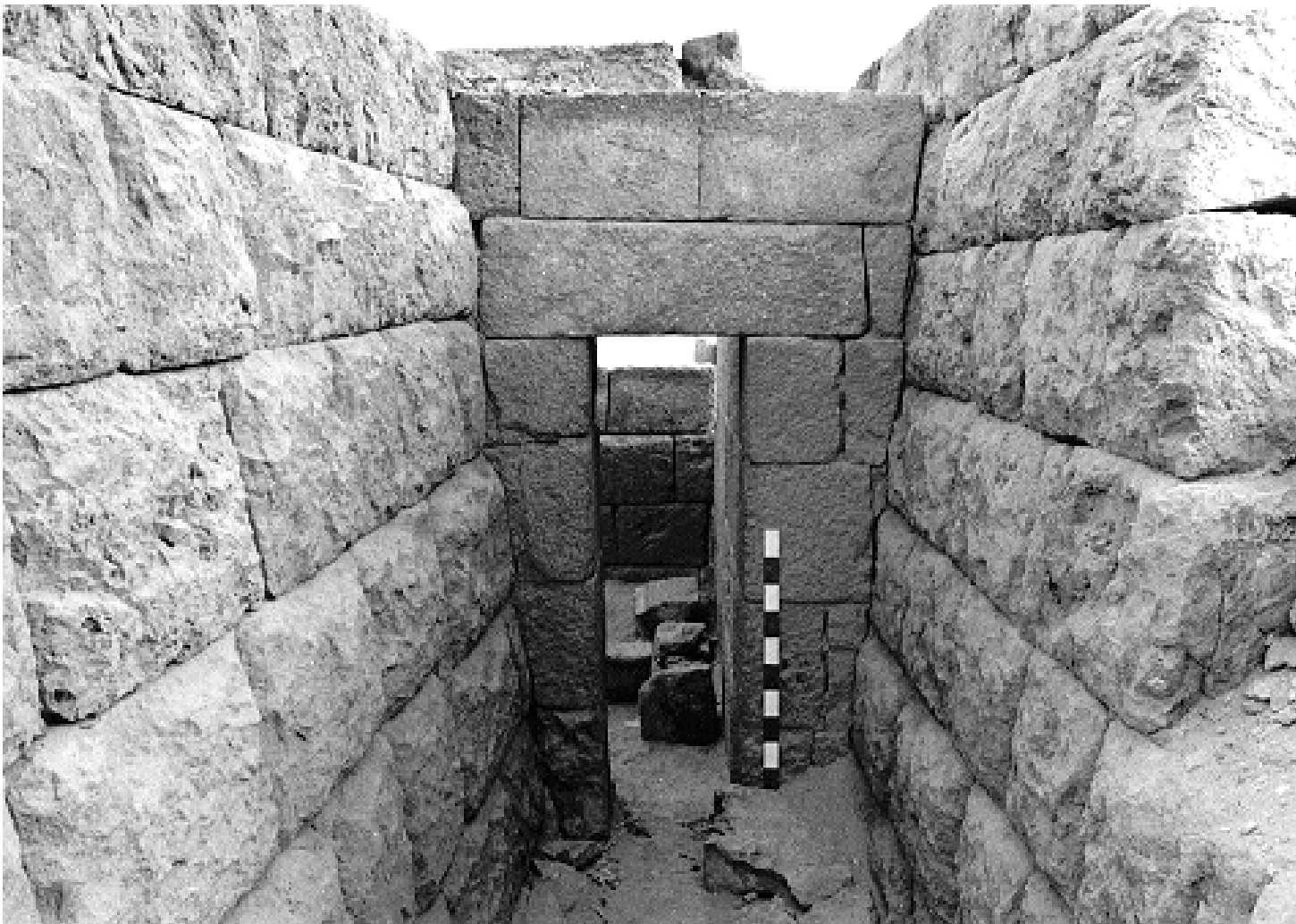
60b. 2091 a: top of shaft. Footholds have been cut down the center of the north face. (The other three faces have similar footholds) (rg 23-13, 1989)



61. 2091 a: the *kerst* coffin of Kapi in situ. The lid is displaced and a skull (presumably Kapi's) has been placed by some macabre tomb robber atop the lid at the far end. The irregular silhouette of the head suggests that some of his hair was preserved (a 7681)



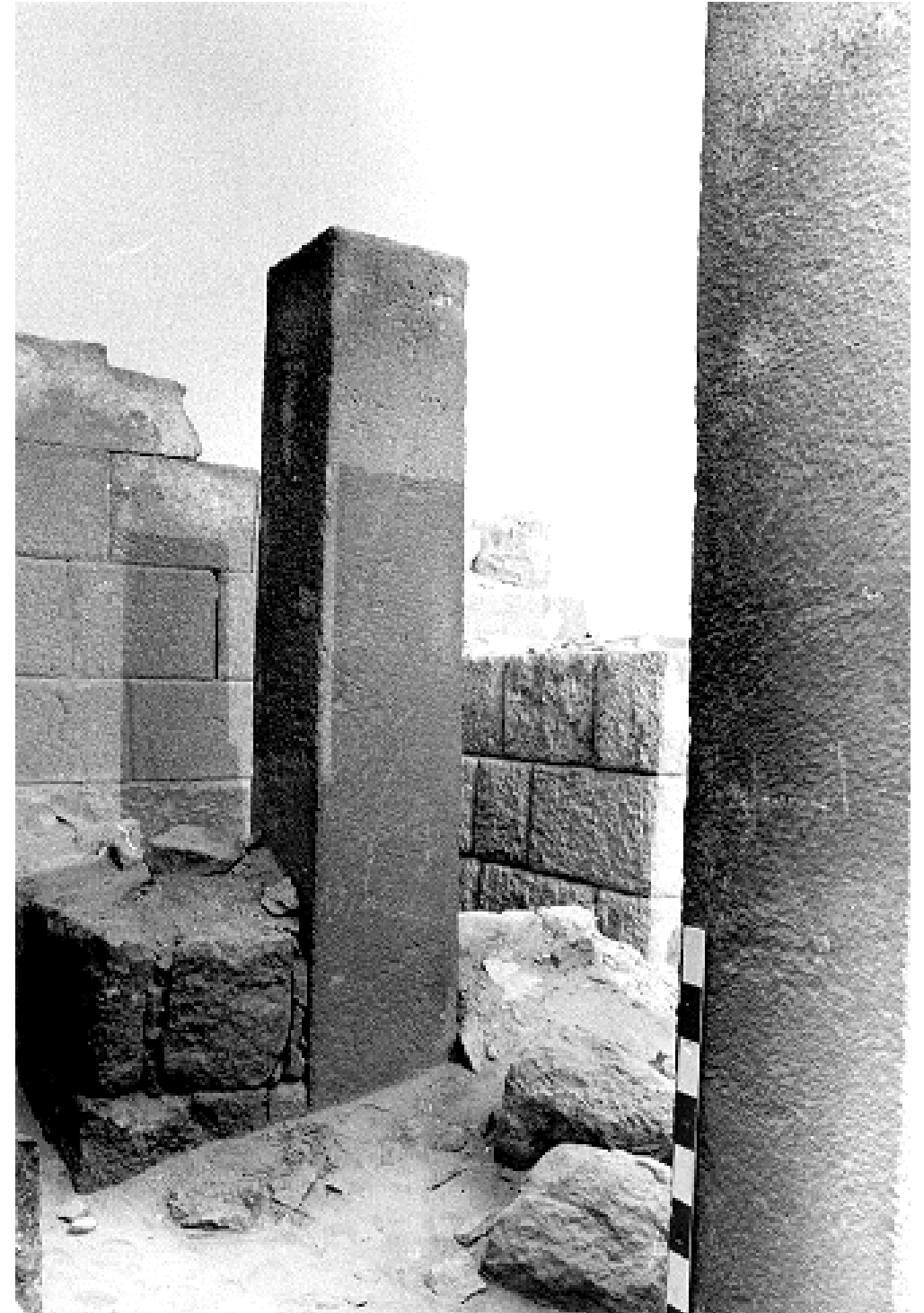
62a. The passage between 2092 (left) and 2091 from the south. A low, enigmatic rubble-built structure lies against the north face of 2091 (rg 23-12, 1989)



62b. South face of the doorway built between 2092 (left) and 2091, showing the fitting of the abutting masonry (rg 6-29, 1989)



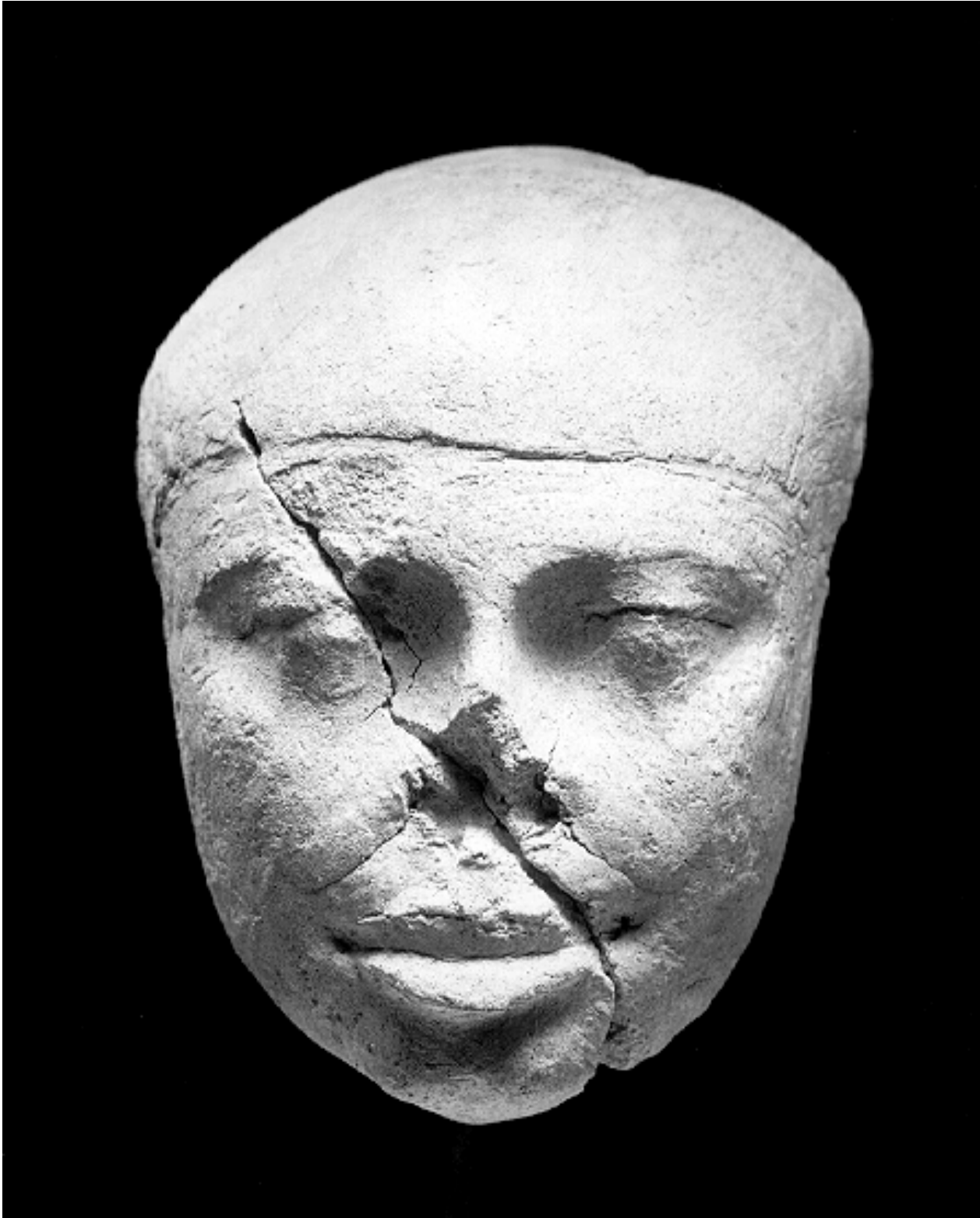
63a. The pillars in the courtyard north of 2092+2093, showing the alignment of the pillars with notches in the facades of 2091 (center, foreground) and 2096 (the wall in the background). A slightly higher notch in 2096, about 1 m to the left of the lower notch, probably represents the position of the architrave when this courtyard served as a portico entrance to 2092+2039. The intrusive mastaba 2092a and its shaft can be seen around the base of the far column. Just above and to the left of its southern (left) face is the southern serdab slot of 2096, a finely finished thin vertical gap between two wall blocks (amr, 1990)



63b. Detail showing the construction of 2092a in the courtyard of 2092+2093. The false door was originally set into the gap between the far pillar and the adjacent wall. The northern serdab slot of 2096 can be seen at the edge of the pillar's shadow (rg 6-27, 1989)



64. 2092a: false door, carved in sunk relief. The name of the original owner, Nimaatre/Tut, survives on the drum lintel and the three left jambs. The three right jambs have been shaved back to admit the name and titles of a second individual, Khaef-Khnum/Beby. (The clearest trace of the original inscription can be seen on the rightmost jamb where the blade of the earlier *ms*-sickle can be seen crossing the *x*.) The cutting back begins below the title *hntj-š* on the inner jamb, after the *rn nfr* of the middle jamb (the *f* seems to have been moved down to fill more space), and below the phrase *hr nswt* on the outer jamb (a 7688)



65a. 2092a a: Front view of the plaster mask covering the face of the burial (psd c 8282)



65b. 2092a a: Side view of the plaster mask covering the face of the burial. The rest of the body was also covered with plaster (c 13909)



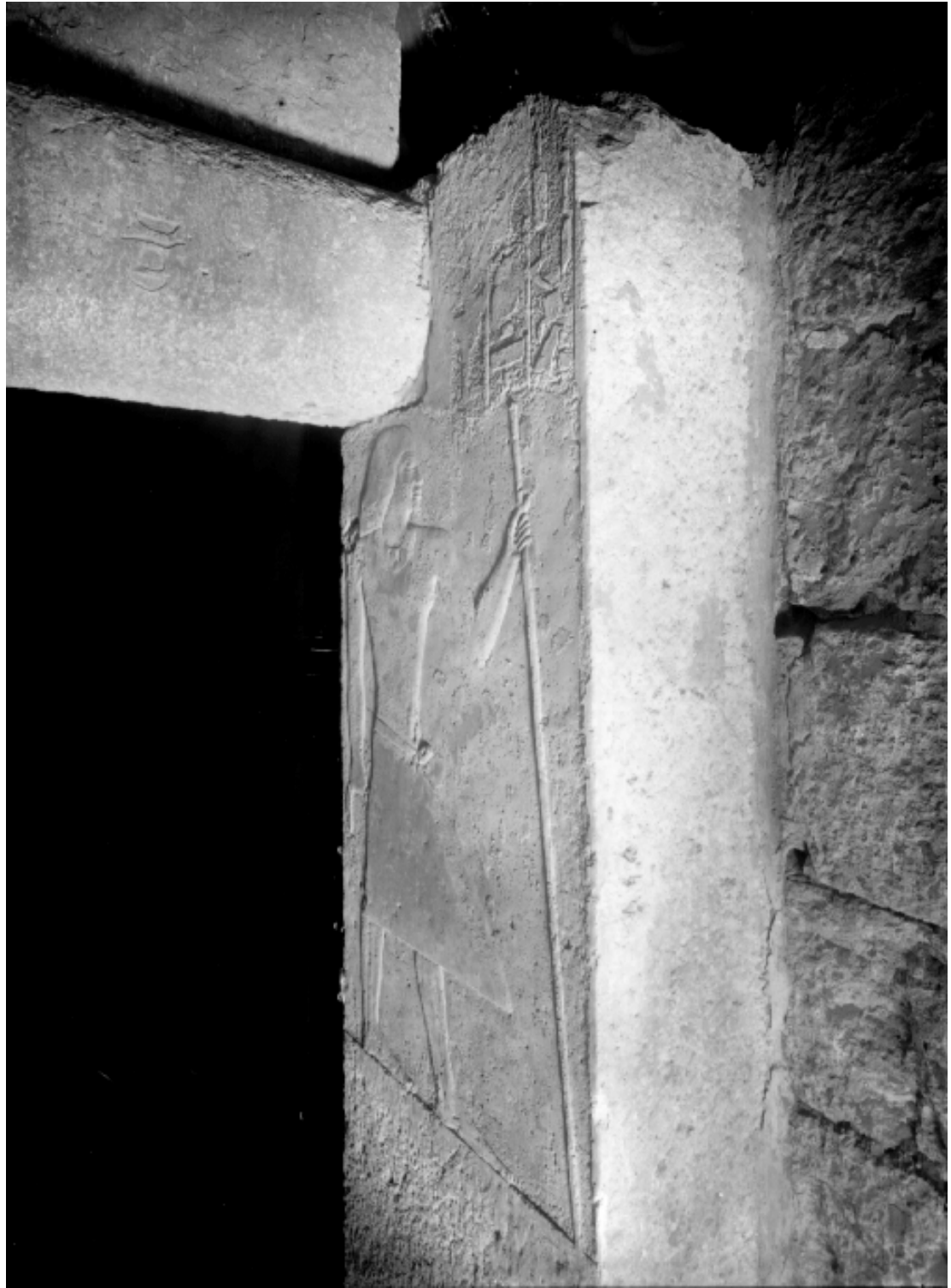
66a. 2092+2093: overall view of the chapel, with the fallen pillar in the center of the recess. The position of shaft a in the foreground is directly behind the false door, at right. The rubble-built shaft behind the recess is shaft d (rg 7-10, 1989)



66b. 2092+2093: view of north doorway, showing the abutment of 2096 (at right) against the earlier stepped facade of 2093. Some of the blocks of the older structure were clearly cut back to receive the new masonry (amr, 1990)



67a. 2092+2093: drum lintel and east doorjamb. Za-ib with his name and titles. Note the clear use of a z in the writing of his name here (a 7685)



67b. 2092+2093: west doorjamb. Za-ib's figure is complete, but his name and titles are only partially carved. Also unfinished is the inscription on the adjacent drum lintel, of which only four hieroglyphs were carved (a 7684)



68a. 2092+2093: west wall, north of recess. The only remaining decoration from this wall shows two men under an arbor picking grapes into baskets, presumably part of a larger wine-making scene (b 8729)



68c. 2092+2093: very battered loose block from the top of 2096, certainly to be restored here. Za-ib and his wife Tjentet are shown with family members. The rectangular area cut out at the top of the block was a serdab slot; however, no serdab survives in this mastaba (rg 21-20, 1989)



68b. 2092+2093: loose block from the upper left border of a scene, probably to be restored here. Za-ib was depicted at right, while a steward shows him a scroll and an endowment official stands ready with another (b 9325)



68d. 2092+2093: two loose blocks probably from here. (The left block is presently in the chapel, and seems to join with other fragments still in the area; the right block's position is less clear, but since they appear in the same photograph, they presumably were excavated together.) The left block shows the staff and kilt of the tomb owner with his daughter Nefer-wenes, while the right fragment shows musicians and offering bearers (c 14365)



69a. 2092+2093: dislocated pillar, perhaps south face (b 8736)



69b. 2092+2093: dislocated pillar, perhaps east face (b 8730)



69c. 2092+2093: dislocated pillar, perhaps north face (b 8431)



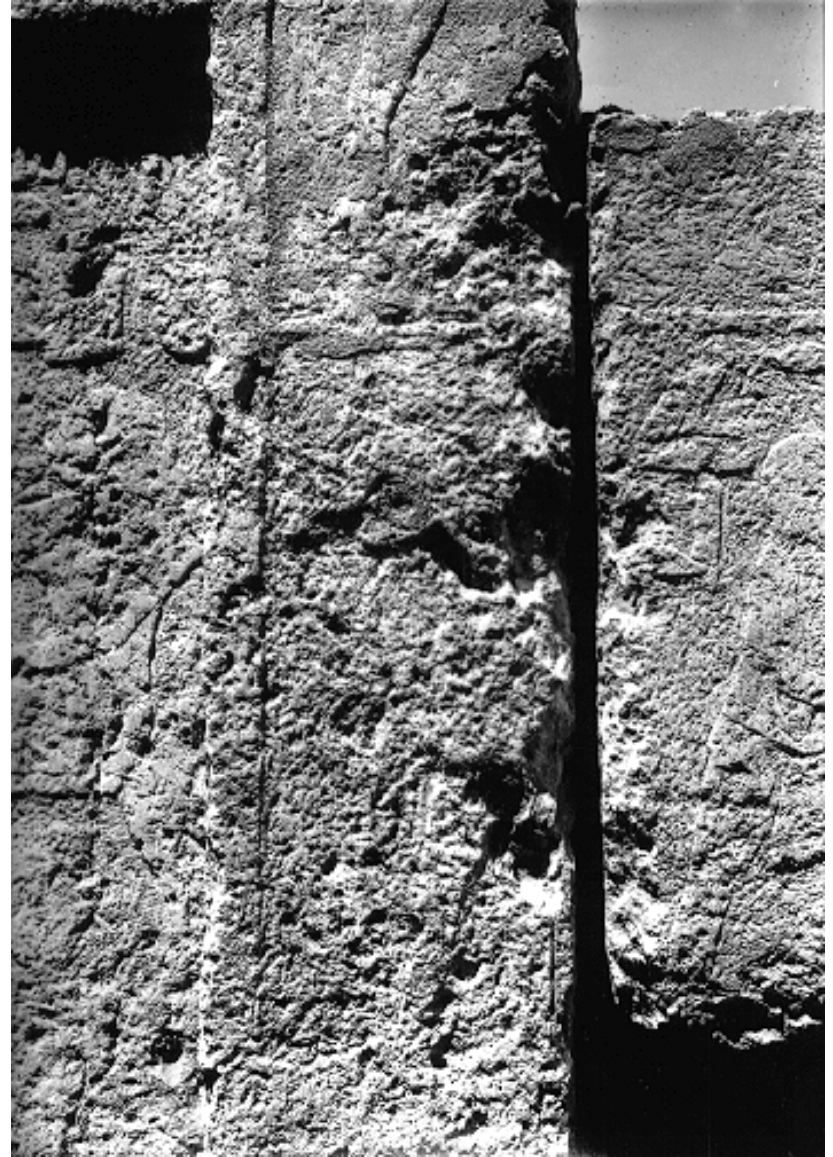
69d. 2092+2093: dislocated pillar, perhaps west face (b 8437)



70a. 2092+2093: architrave fragment, found south of mastaba (a 8211)



70b. 2092+2093: west wall, south of recess, upper left. Only the left edge of a seated figure of Za-ib remains (b 8733)



70c. 2092+2093: west wall, south of recess, lower left, showing the base of Za-ib's chair and, in the badly damaged lower register, a butcher (b 8734)



71a. 2092+2093: west wall south of recess, lower right. Butchers and, above, the bottom of an offering table scene, with an offering-bearer at right (a 7683)



71b. 2092+2093: tablet of false door. Za-ib is shown standing before three columns of text (b 8732)