



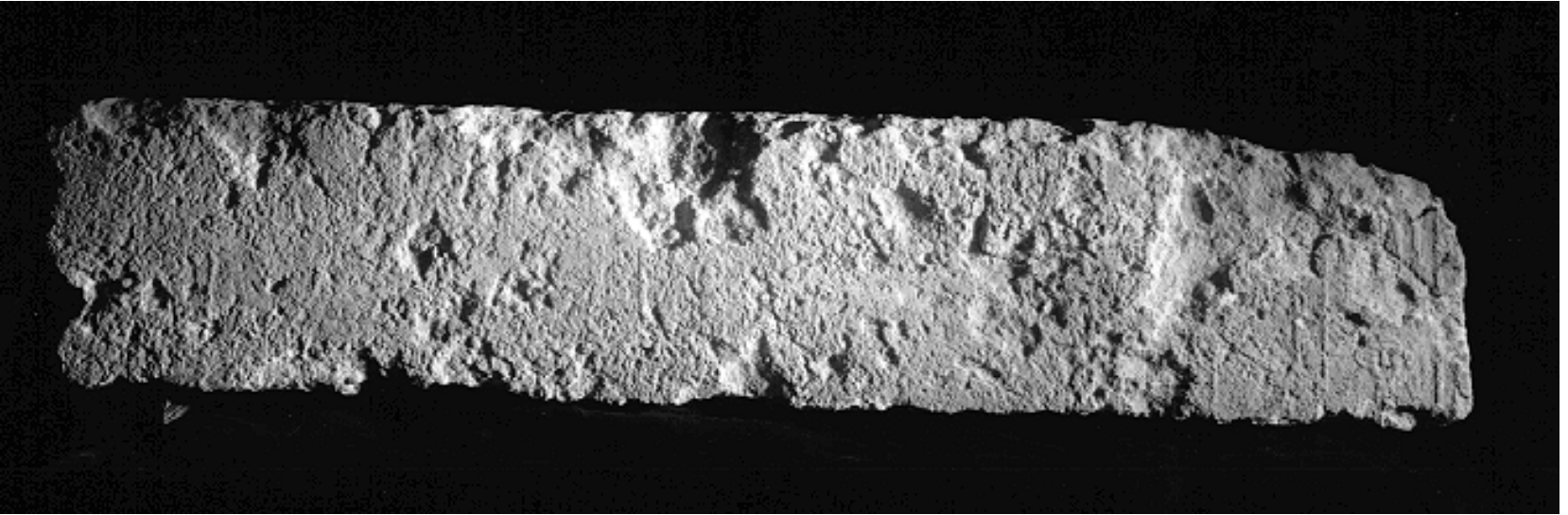
86a. 2097: corner of the courtyard to the east. The angled line at the base of the later east wall of the courtyard shows the line of the original west facade of 2097', rebuilt to make the courtyard rectangular. The wall at left is the north wall of the courtyard, added in Phase iii (rg 6-23, 1989)



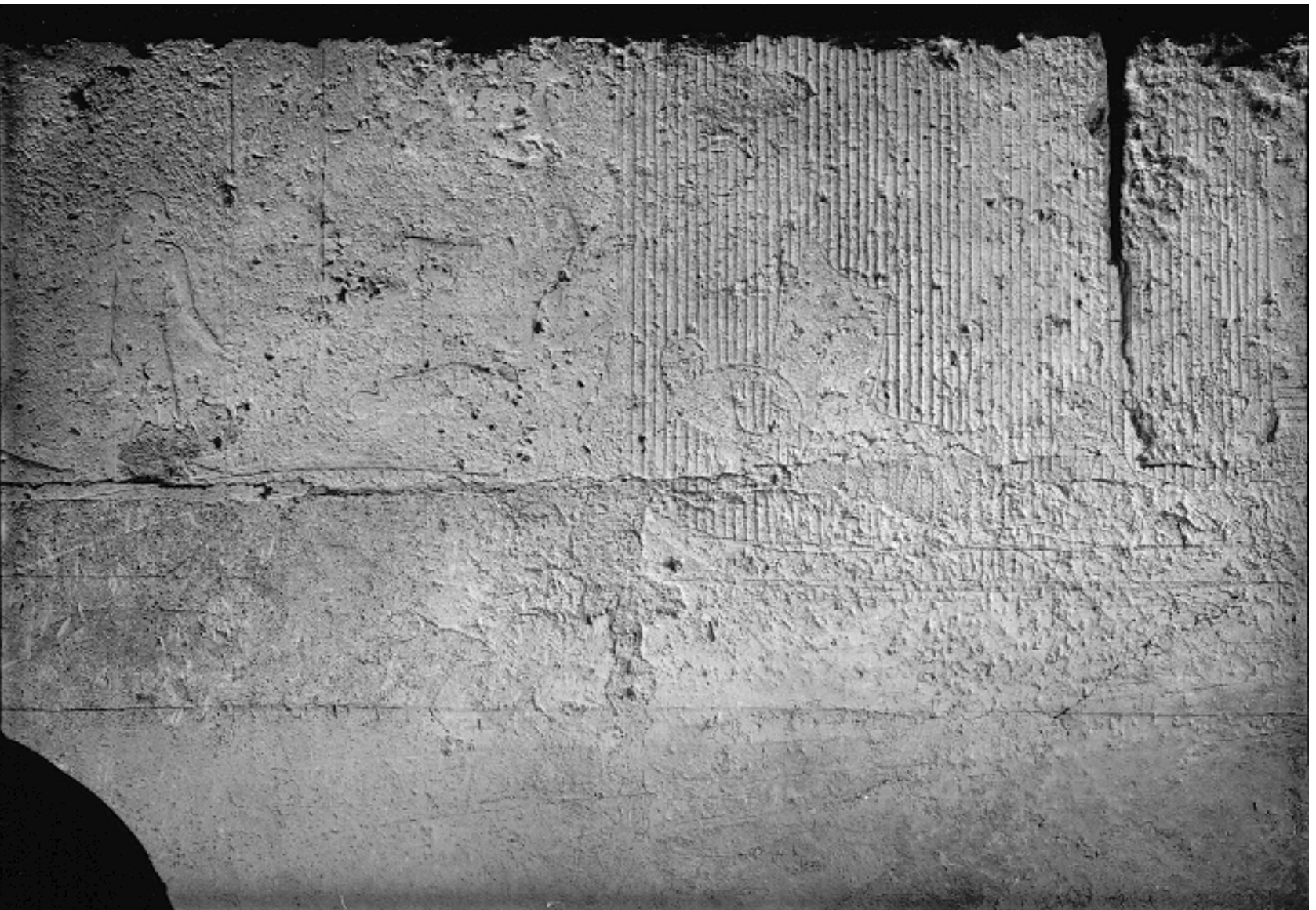
86b. 2097: door from chapel to courtyard. Beneath the scale stick is a raised round area which was perhaps intended to hold a door pivot, although the hole was never cut. To the right can be seen the "scar" left at the base of a wall when a floor block is removed (rg 6-15, 1989)



87. 2097: north wall, west end. Lower part of fish-spearing scene (a 8128)



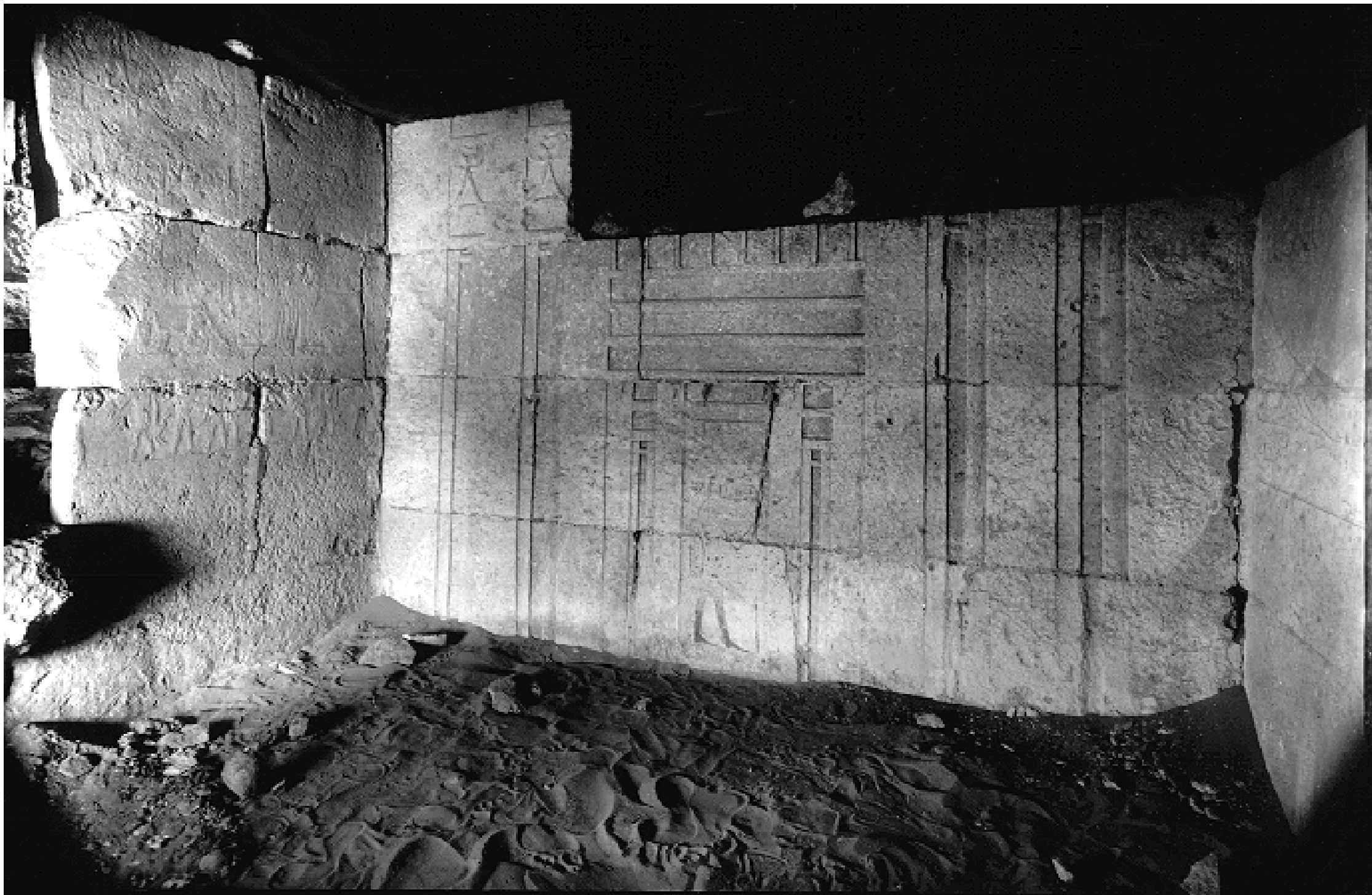
88a. 2097: loose block from upper part on north wall, west end. Titles of Nimaatre (a 8159)



88b. 2097: north wall, center. Tomb owner and *Wasserberg* are at left; at right are fishermen casting nets in a papyrus marsh (a 8129)



89. 2097: north wall, east end. Scenes of fishing and cattle raising (a 8130)



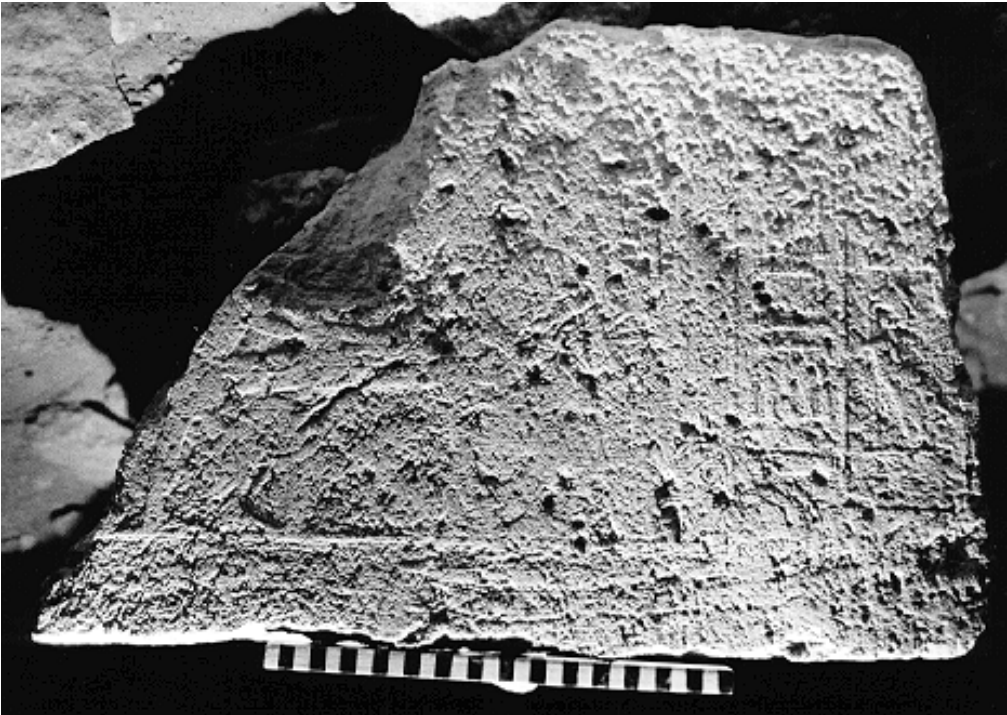
90. 2097: recess, showing palace facade paneling on west wall (a 8160)



91. 2097: west wall of recess. Detail of the intrusive figure of Mernetjer-Izezi on central door of palace facade (a 8134)



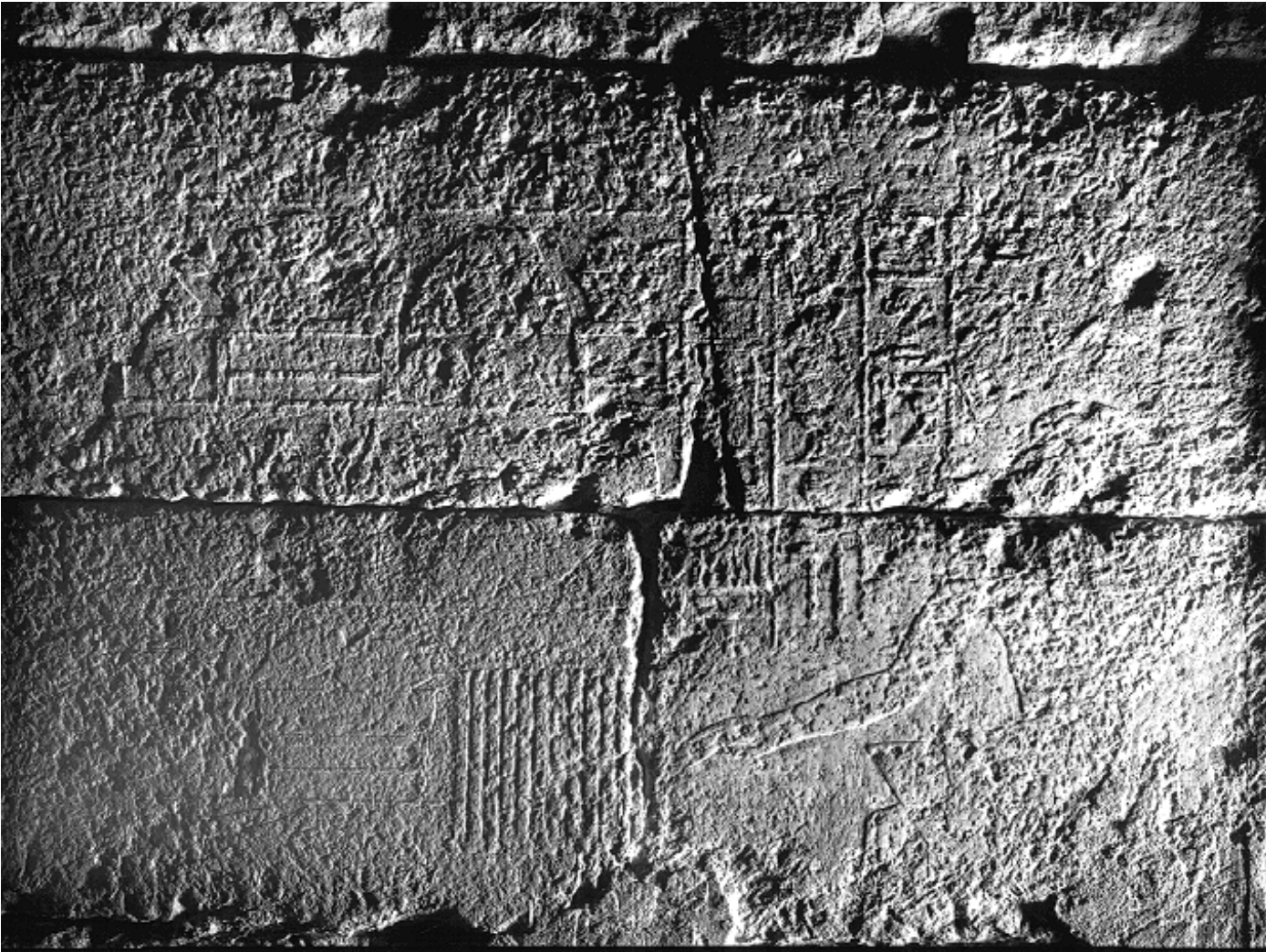
92. 2097: south wall of recess. Nimaatre playing senet (a 8136)



93a. 2097: loose block, to be restored above west wall of recess. Bed-making scene (rg 21-22)



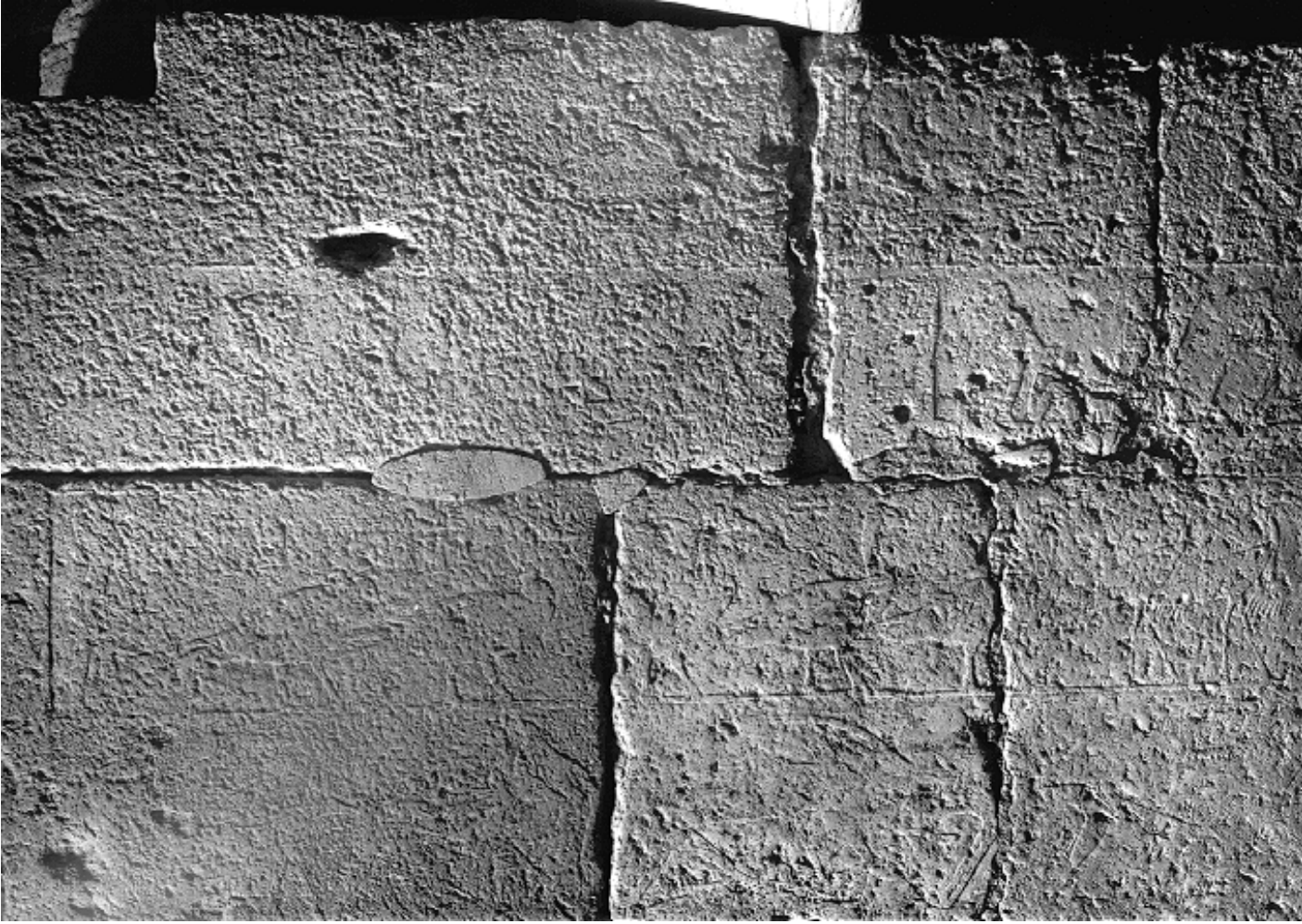
93b. 2097: south wall. Nimaatre at offering table, with offering list above (rg 18-39, 1989)



94a. 2097: south wall, upper part. Offering scene, with Nimaatre at right. Above the piled offerings and titles are traces of an offering list (a 8117)



94b. 2097: south wall, lower part. Offering bearers (lowest register), dancers and musicians, and the lower part of the offering table scene (a 8119)



95a. 2097: east wall, upper left section. Above repeated register of desert life are a register of domestic fowl, a register of reaping scenes, and a register showing fighting boatmen (a 8126)



95b. 2097: east wall, lower left section. Animals copulating (lowest register), hunting and being hunted in the desert (a 8127)



96a. 2097: east wall, upper middle section. Above the repeated register of desert life are scenes of men leading animals to offer, scenes of threshing, and scenes of plowing (a 8124)



96b. 2097: east wall, lower middle section. Three registers of desert wildlife (a 8125)



97a. 2097: east wall, upper right section. Mernetjer-Izezi observing scenes to left. The scenes immediately before him seem to depict scribes (a 8120)



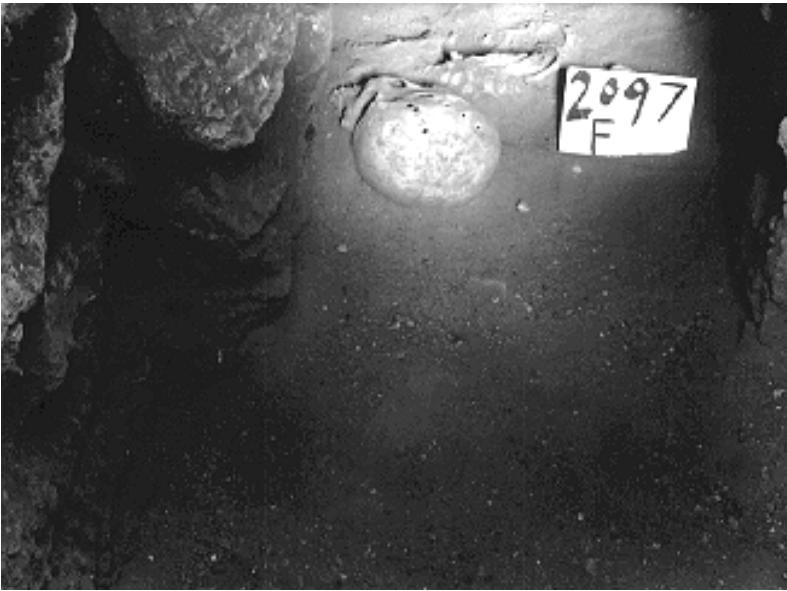
97b. 2097: east wall, lower right section. Two registers of wildlife in the desert and, above, a register of men bringing animals to offer (a 8121)



98a. 2097': undecorated false door at south end of east face (rg 7-4, 1989)



98b. 2097': small false door tablet of Tjezet, under serdab slots at the north end of the east face (b 9032)



99a. 2097 f: leg-contracted burial, described as a child. The holes and pitting in top of skull are likely the result of post mortem damage (c 14259)



99b. 2097b: view of "mastaba" from the west (amr, 1990)



99c. 2097b: interior space. The parallel walls in the foreground are the base of the T-shaped interior space, reconstructed as the entrance to a courtyard before the construction of the wall in the center of the photo. Behind the wall, note the doorway to the portico of 2092=2093, which aligns exactly with the base of the "T" (rg 7-13, 1989)