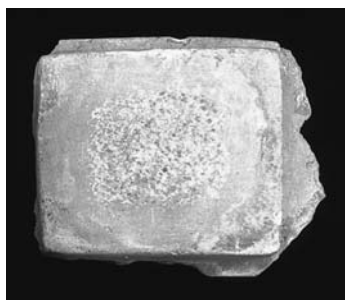




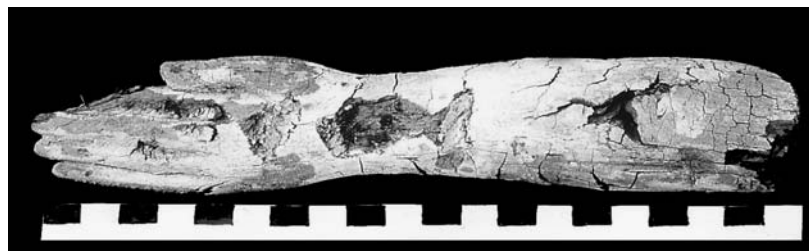
101a. Limestone offering cases from G 2385 A. 25 January 1913. HU-BMFA Exp. Ph. B 1679



101b. Diorite bowl with cartouche of Teti from G 2385 A, 12-12-209 = MFA 13.3141. May-June 1913. HU-BMFA Exp. Ph. C 4465



101c. Fragmentary headrest from G 2374, 12-11-33. June 1913. HU-BMFA Exp. Ph. A 997 1/4



101d. Forearm of a wooden statuette from G 2385 A, 12-12-206. June 1913. HU-BMFA Exp. Ph. A 992 3/3



101e. Wig fragment from G 2385 A, 12-12-85. June, 1913. HU-BMFA Exp. Ph. A 992 2/1



101f. Wooden finger with plaster on end from debris in G 2385 A, 12-12-105. June, 1913. HU-BMFA Exp. Ph. A 992 3/2



101h. Cylinder beads from debris of G 2385 A, 12-12-111. June, 1913. HU-BMFA Exp. Ph. A 991 1/9



101i. Alabaster cores(?) and model block headrest from G 2385 A (headrest from debris), 12-12-86, 12-12-87, and 12-12-97. 26 January 1913. HU-BMFA Exp. Ph. B 1684 2/7, 2/9, and 2/10



101g. Dummy alabaster shoulder jar, 12-12-107 (left), and rough offering saucer, 12-12-108 (right), from debris in G 2385 A. June, 1913. HU-BMFA Exp. Ph. A 996 1/2 (left) and 3/2 (right)



102a. Overview of G 2376-2378, looking south-southeast. 21 December 1912. HU-BMFA Exp. Ph. B 1603



102b. Burial chamber G 2377 A, burial. 11 December 1913. HU-BMFA Exp. Ph. c 3345



102c. Model vessels from burial chamber G 2377 A, 13-1-516/521. 16 January 1913. HU-BMFA Exp. Ph. c 3351



103a. Senedjemib Mehi (G 2378), reconstructed facade with light boxes of Sound and Light at left, looking northwest. December 1993. Edward Brovanski



103b. Senedjemib Mehi (G 2378), from photographic tower on G 2370, looking northeast. 12 January 1913. HU-BMFA Exp. Ph. A 848



104a. Senedjemib Complex, offering room of G 2375 (left), north wall of G 2374 and shaft G 2376 A (right). 13 January 1913. HU-BMFA Exp. Ph. B 1647



104b. Senedjemib Mehi (G 2378), older walls under filling, looking south. 27 December 1991. HU-BMFA Exp. Ph. B 1609



105a. Senedjemib Mehi (G 2378), inscribed architrave block. 2 August 1930. HU-BMFA Exp. Ph. A 5806



105b. Senedjemib Mehi (G 2378), inscribed architrave block. 3 August 1930. HU-BMFA Exp. Ph. A 5807



105c. Senedjemib Mehi (G 2378), inscribed architrave block. 2 August 1930. HU-BMFA Exp. Ph. A 5805



106. Senedjemib Mehi (G 2378), portico, west wall. 23 August 1930. HU-BMFA Exp. Ph. A 5868



107. Senedjemib Mehi (G 2378), portico, west wall, lower part. 23 August 1930. HU-BMFA Exp. Ph. A 5869



108a. Senedjemib Mehi (G 2378), portico, north wall, west of entrance. 11 March 1931. HU-BMFA Exp. Ph. A 6368



108b. Senedjemib Mehi (G 2378), portico, north wall, east of entrance, detail. 11 March 1931. HU-BMFA Exp. Ph. B 7756





109. Senedjemib Mehi (G 2378), portico, north wall, east of entrance. 14 March 1931. HU-BMFA Exp. Ph. A 6378 (lower section); inset: A 6379 (upper section, loose block)



110. Senedjemib Mehi (G 2378), portico, east wall. 9 March 1931. HU-BMFA Exp. Ph. A 6369



III. Senedjemib Mehi (G 2378), portico, east wall with restored block at upper right. 24 February 1931. HU-BMFA Exp. Ph. A 6332



112a. Senedjemib Mehi (G 2378), Room II, left (west) entrance thickness. 29 November 1930. HU-BMFA Exp. Ph. A 6056



112b. Senedjemib Mehi (G 2378), Room II, right (east) entrance thickness. 9 March 1931. HU-BMFA Exp. Ph. A 6370



113. Senedjemib Mehi (G 2378), Room II, south wall, west of entrance. 24 February 1931. HU-BMFA Exp. Ph. A 6333



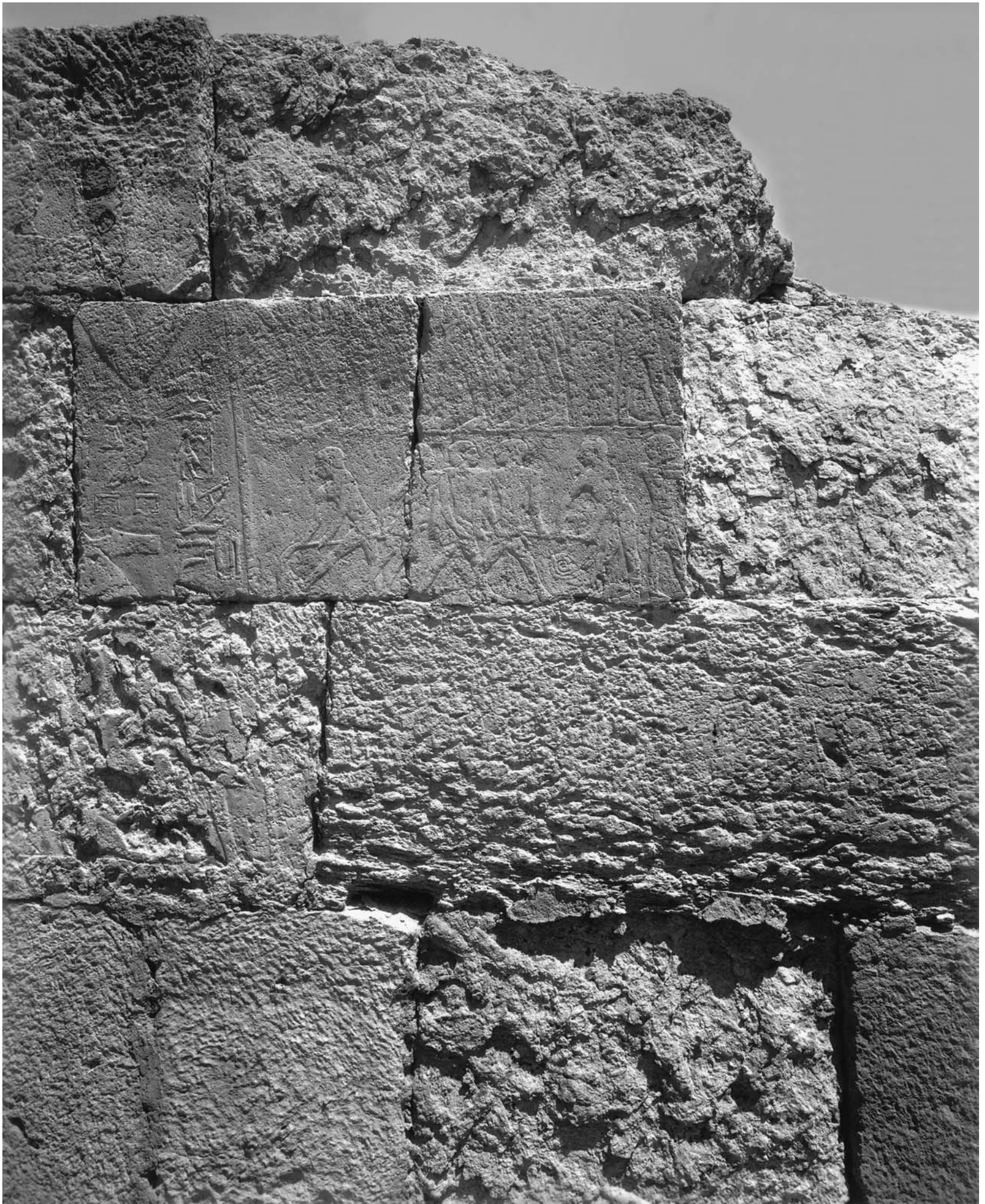
114a. Senedjemib Mehi (G 2378), Room II, west wall, upper section. 14 March 1931. HU-BMFA Exp. Ph. A 6380



114b. Senedjemib Mehi (G 2378), Room II, west wall, lower section. 13 March 1931. HU-BMFA Exp. Ph. A 6365



115. Senedjemib Mehi (G 2378), Room II, north wall, western section. 4 August 1930. HU-BMFA Exp. Ph. A 5803



116. Senedjemib Mehi (G 2378), Room II, north wall, middle section. 4 August 1930. HU-BMFA Exp. Ph. A 5802





117a. Senedjemib Mehi (G 2378), Room II, north wall, eastern section. 4 August 1930. HU-BMFA Exp. Ph. A 5801 (= PSD E 13475)



117b. Senedjemib Mehi (G 2378), Room II, loose block assigned to north wall. 23 November 1935. HU-BMFA Exp. Ph. B 8547



117c. Senedjemib Mehi (G 2378), Room II, inner west entrance thickness for battens on back of wooden door. February 1999. Bradford M. Endicott E 26-23



118. Senedjemib Mehi (G 2378), Room II, south wall, east of entrance. 12 March 1931. HU-BMFA Exp. Ph. A 6362



119a. Senedjemib Mehi (G 2378), Room II, south wall, east of entrance, eastern section. 13 March 1931. HU-BMFA Exp. Ph. A 6361



119b. Senedjemib Mehi (G 2378), Room II, south wall, east of entrance, western section. 12 March 1931. HU-BMFA Exp. Ph. A 6364



120. Senedjemib Mehi (G 2378), Room III, left (west) entrance thickness. 24 February 1931. HU-BMFA Exp. Ph. A 6331



121. Senedjemib Mehi (G 2378), Room III, west wall, false door. 13 September 1913. HU-BMFA Exp. Ph. A 1077



122. Senedjemib Mehi (G 2378), Room III, north wall, western section. Field Museum of Natural History, Chicago, acc. no. 31705. Field Museum negative no. 68394



123. Senedjemib Mehi (G 2378), Room III, north wall, eastern section. 8 March 1931. HU-BMFA Exp. Ph. A 6337



124a. Senedjemib Mehi (G 2378), Room III, north wall, eastern section, detail. 11 March 1931. HU-BMFA Exp. Ph. A 6367



124b. Senedjemib Mehi (G 2378), Room III, north wall, eastern section, detail. 11 March 1931. HU-BMFA Exp. Ph. A 6366





125a. Senedjemib Mehi, entrance to sloping passage tomb G 2378 A, looking west-southwest. 20 December 1912. HU-BMFA Exp. Ph. c 3197



125b. Senedjemib Mehi, burial chamber G 2378 A, looking south. 8 July 1935. HU-BMFA Exp. Ph. A 7284



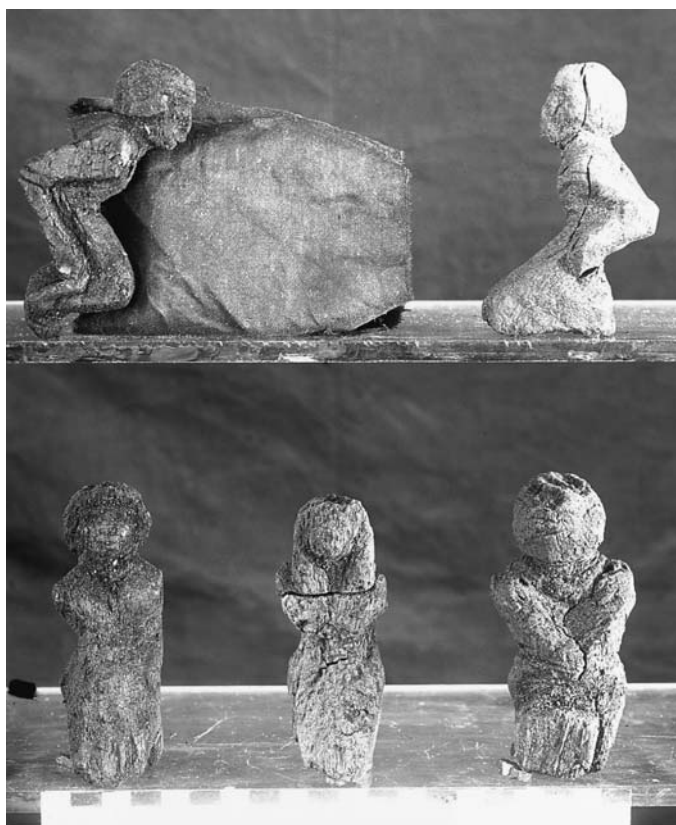
126a. Senedjemib Mehi, burial chamber G 2378 A, inside of sarcophagus. 8 July 1935. HU-BMFA Exp. Ph. A 7285



126b. Senedjemib Mehi, burial chamber G 2378 A, bones of offerings in northeast corner, looking west. 8 July 1935. HU-BMFA Exp. Ph. C 13493



126c. Mud plummet from G 2378, 12-12-41. June, 1913. HU-BMFA Exp. Ph. A 992 1/8



126d. Senedjemib Mehi, burial chamber G 2378 A, wooden prisoner figures. May-June 1913. HU-BMFA Exp. Ph. B 1922



126e. Senedjemib Mehi, burial chamber G 2378 A, wooden prisoner figures. May-June 1913. HU-BMFA Exp. Ph. C 4475