



51a. Senedjemib Inti (G 2370), Room V, pillared hall, looking west-northwest. 13 November 1912. HU-BMFA Exp. Ph. B 1279



51b. Senedjemib Inti (G 2370), Room V, right (east) entrance thickness. 23 February 1931. HU-BMFA Exp. Ph. A 6309



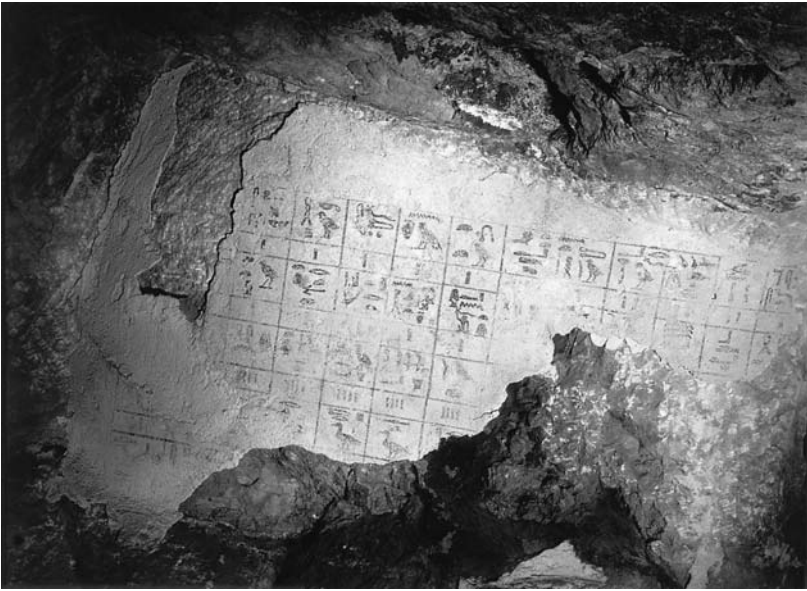
52a. Senedjemib Inti (G 2370), Room V, left (west) entrance thickness. 22 February 1930. HU-BMFA Exp. Ph. A 6310



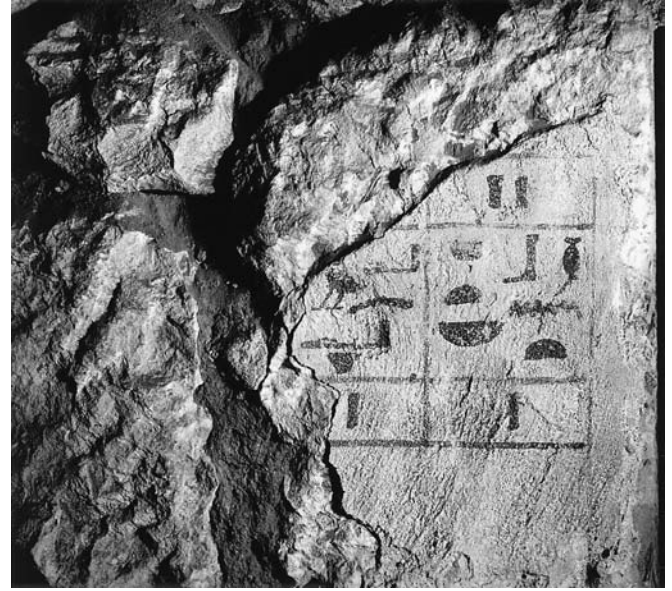
52b. Senedjemib Inti (G 2370), Room V, looking south to Room II, niches in walls. 24 November 1993. Peter Der Manuelian 93.114.30



52c. Senedjemib Inti (G 2370), Room V, niche in east wall, looking southeast. 24 November 1993. Peter Der Manuelian 93.114.31



53a. Senedjemib Inti (G 2370), burial chamber G 2370 B, painted offering list on plaster on east wall, north of entrance, looking east. 4 January 1913. HU-BMFA Exp. Ph. c 3279



53b. G 2370 B, painted offering list on plaster on east wall, north of entrance, looking east. 3 July 1935. HU-BMFA Exp. Ph. c 13492



53c. G 2370 B, inscribed sarcophagus (see frontispiece F). 6 July 1935. HU-BMFA Exp. Ph. A 7281



54a. G 2370 B, body of Senedjemib Inti in sarcophagus. 4 January 1913. HU-BMFA Exp. Ph. c 3278



54c. G 2370 B, inscription on east side of sarcophagus. 4 July 1913. HU-BMFA Exp. Ph. C 3274



54d. G 2370 B, inscription on east side of sarcophagus. 4 July 1913. HU-BMFA Exp. Ph. c 3275



54b. G 2370 B, interior of sarcophagus, inscription in northeastern corner. 4 July 1913. HU-BMFA Exp. Ph. c 3277



54e. G 2370 B, inscription on east side of sarcophagus. 4 July 1913. HU-BMFA Exp. Ph. c 3276



55. G 2370 B, body of Senedjemib Inti in sarcophagus. 6 July 1935. HU-BMFA Exp. Ph. A 7282



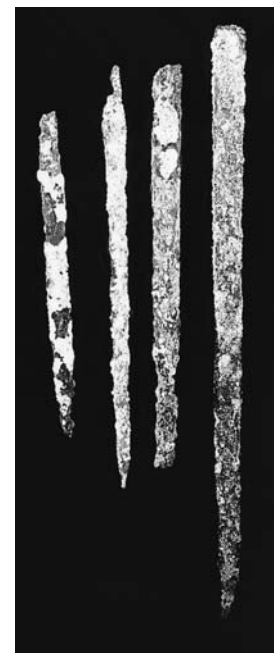
56a. Senedjemib Inti (G 2370), dealer's cache found near doorway inside Room II. 13 November 1912. HU-BMFA Exp. Ph. A 716



56b. Model neckless, copper shoulder jar from G 2370, Serdab I, 12-11-20. HU-BMFA Exp. Ph. A 997 1/1



56c. Diorite bowl from shaft G 2370 A, 12-11-32. May-June 1913. HU-BMFA Exp. Ph. c 4466



56d. Fragments of copper knives, etc. from shaft G 2370 A, 12-11-30. June 1913. HU-BMFA Exp. Ph. A 992 2/8



56e. Model alabaster cylinder jar from shaft G 2370 A, 12-11-28. HU-BMFA Exp. Ph. A 997 1/2



56f. Model BrW bowl from shaft G 2370 A, 12-11-29. June 1913. HU-BMFA Exp. Ph. A 997 1/3



57a. Senedjemib Inti (G 2370), two-handled Syrian jar from burial chamber G 2370 B, 35-7-41. 23 December 1935. HU-BMFA Exp. Ph. c 13649



57b. Decorated fragment of two-handled Syrian jar from burial chamber G 2370 B, 35-7-41. 11 December 1935. HU-BMFA Exp. Ph. c 13640



57c. Nine examples of ovoid jars from burial chamber G 2370 B, 35-7-23. 28 July 1935. HU-BMFA Exp. Ph. B 8591



57d. Row 1/1-9: samples of model alabaster offering saucers from surface debris in front of G 2370 B, 12-12-98. Row 2/1-5: dummy offering jars, 12-12-90/94. Row 2/6: limestone core, 12-12-96. Row 2/8: alabaster core, 12-12-95. Row 2/11: circular jar lid, 12-12-89. 26 January 1913. HU-BMFA Exp. Ph. B 1684



58. Senedjemib Inti (G 2370), facade, north of portico, Inscription A 1 with top of A 2 at bottom. 3 August 1930. HU-BMFA Exp. Ph. A 5810





59. Senedjemib Inti (G 2370), facade, north of portico, top of Inscription A 1. 3 August 1930. HU-BMFA Exp. Ph. A 5812. Inset: inscribed stone from court, joining top of inscription. 19 January 1913. HU-BMFA Exp. Ph. B 1669 [right]



60. Senedjemib Inti (G 2370), facade, north of portico, bottom of Inscription A 1 with top of A 2. 8 September 1913. HU-BMFA Exp. Ph. A 1066



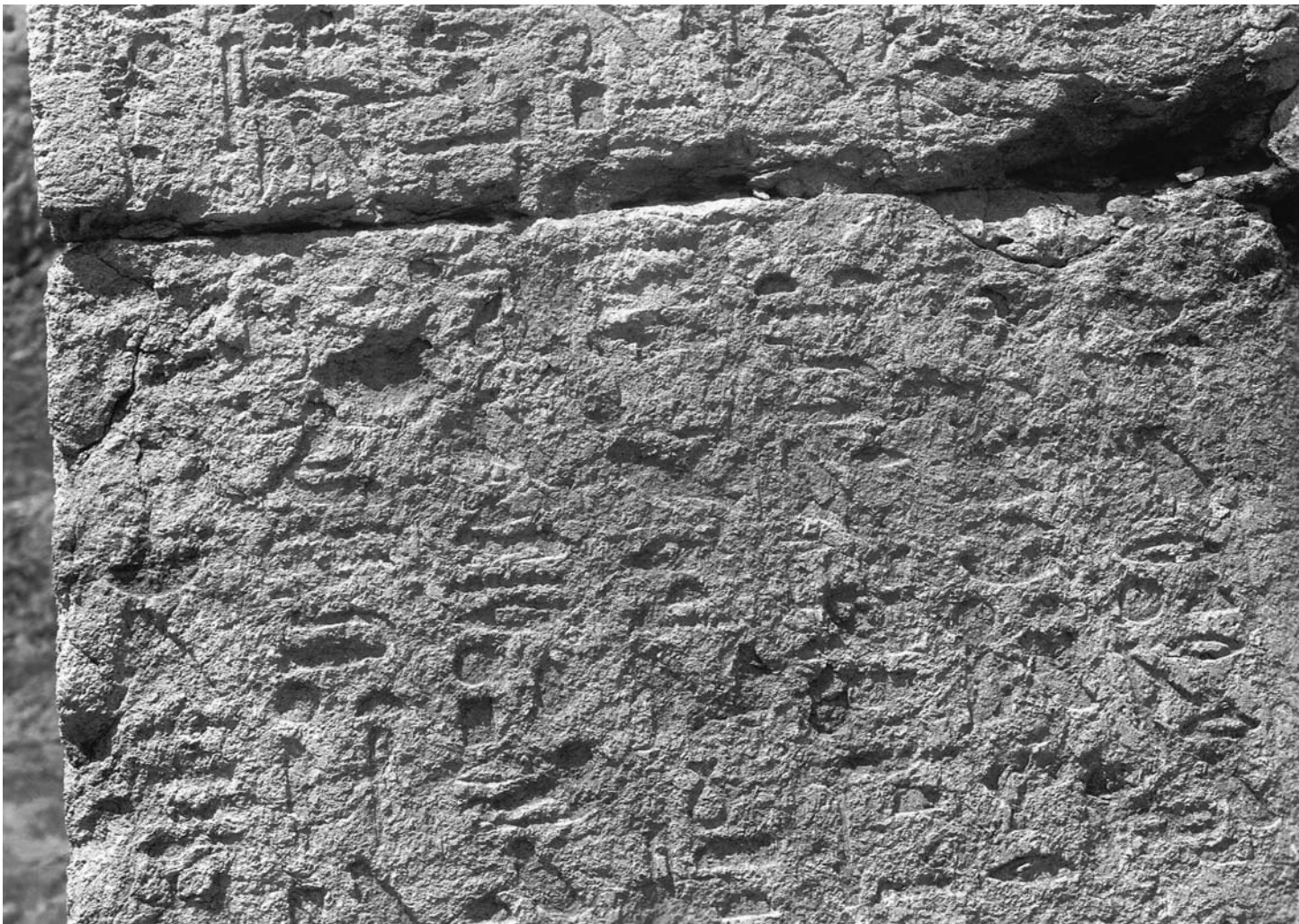
61. Senedjemib Inti (G 2370), facade, north of portico, Inscription A 2 with end of Inscription A 1 at top. 3 August 1930. HU-BMFA Exp. Ph. A 5811



62. Senedjemib Inti (G 2370), facade, north of portico, Inscription A 2. 3 August 1930. HU-BMFA Exp. Ph. A 5814



63a. Senedjemib Inti (G 2370), facade, north of portico, Inscription A 2, top. 9 September 1913. HU-BMFA Exp. Ph. A 1059



63b. Senedjemib Inti (G 2370), facade, north of portico, Inscription A 2, bottom. 9 September 1913. HU-BMFA Exp. Ph. A 1058



64a. Senedjemib Inti (G 2370), portico, north wall, at right Inscription B 1, top. 1 August 1930. HU-BMFA Exp. Ph. v 7162. Inset: Senedjemib Complex, inscribed stone from court, joining the top of the inscription. 19 January 1913. HU-BMFA Exp. Ph. v 1668 [bottom right]



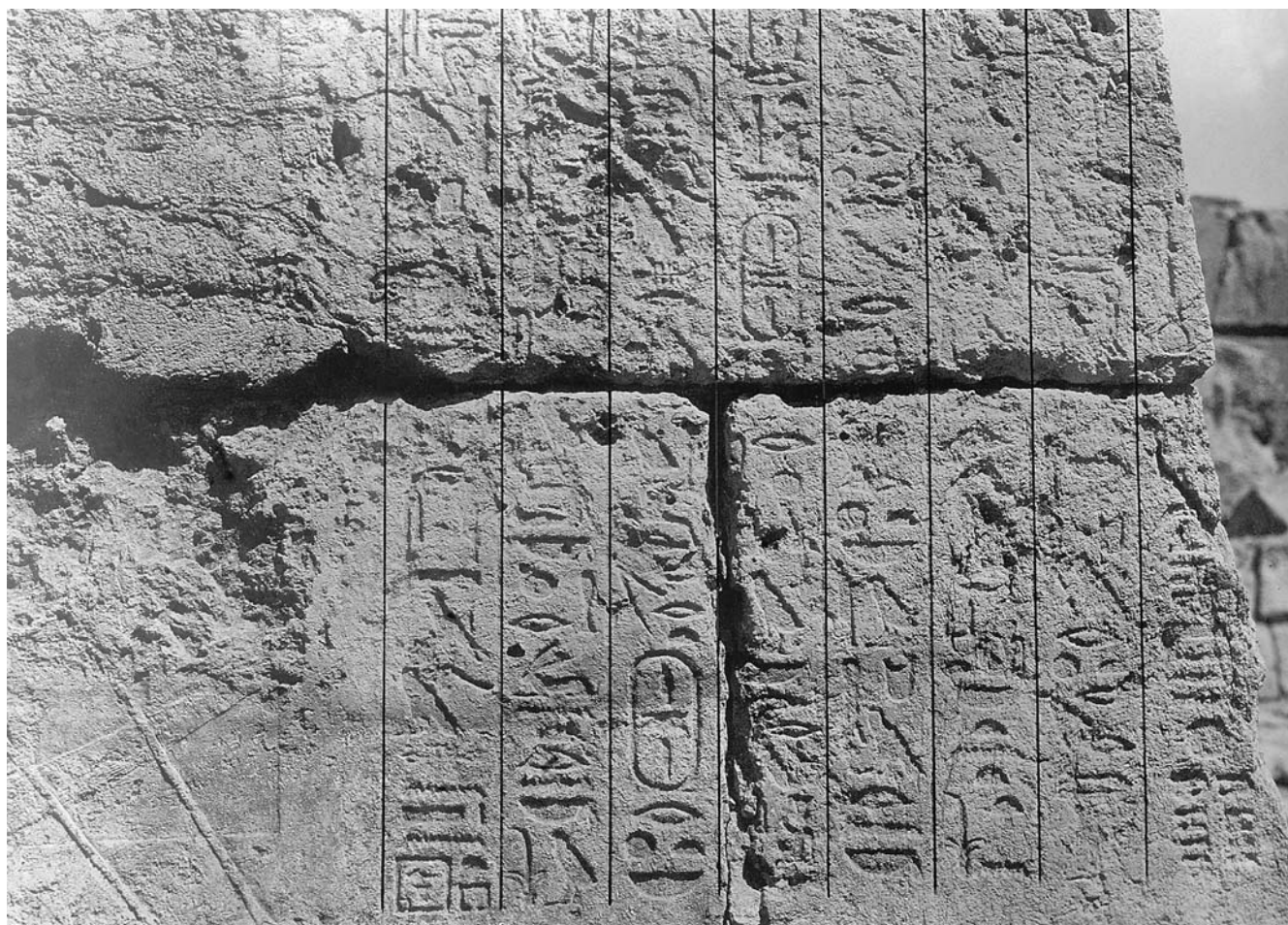
64b. Senedjemib Inti (G 2370), portico, north wall, Inscription B 1, bottom. 1 September 1913. HU-BMFA Exp. Ph. A 1055



65. Senedjemib Inti (G 2370), portico, north wall, Inscription B 2 with B 1 at top. 4 August 1930. HU-BMFA Exp. Ph. A 5816

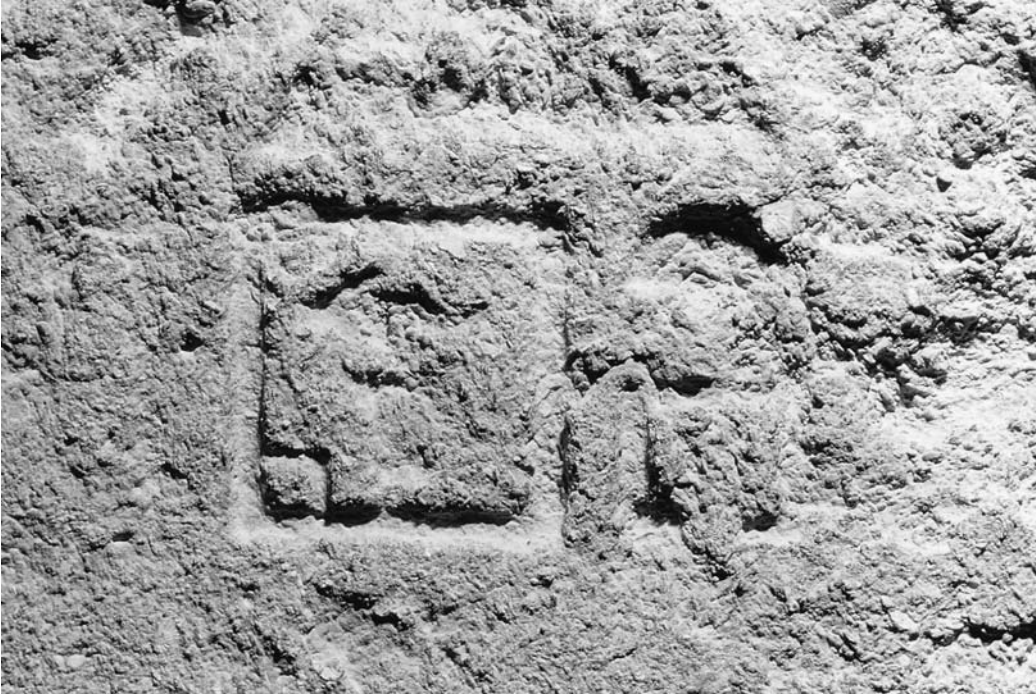


66a. Senedjemib Inti (G 2370), portico, north wall, Inscription B 1, bottom, and B 2, top. 1 September 1913. HU-BMFA Exp. Ph. A 1056



66b. Senedjemib Inti (G 2370), portico, north wall, Inscription B 2, bottom, with modern lines in ink. 26 February 1931. HU-BMFA Exp. Ph. A 6329





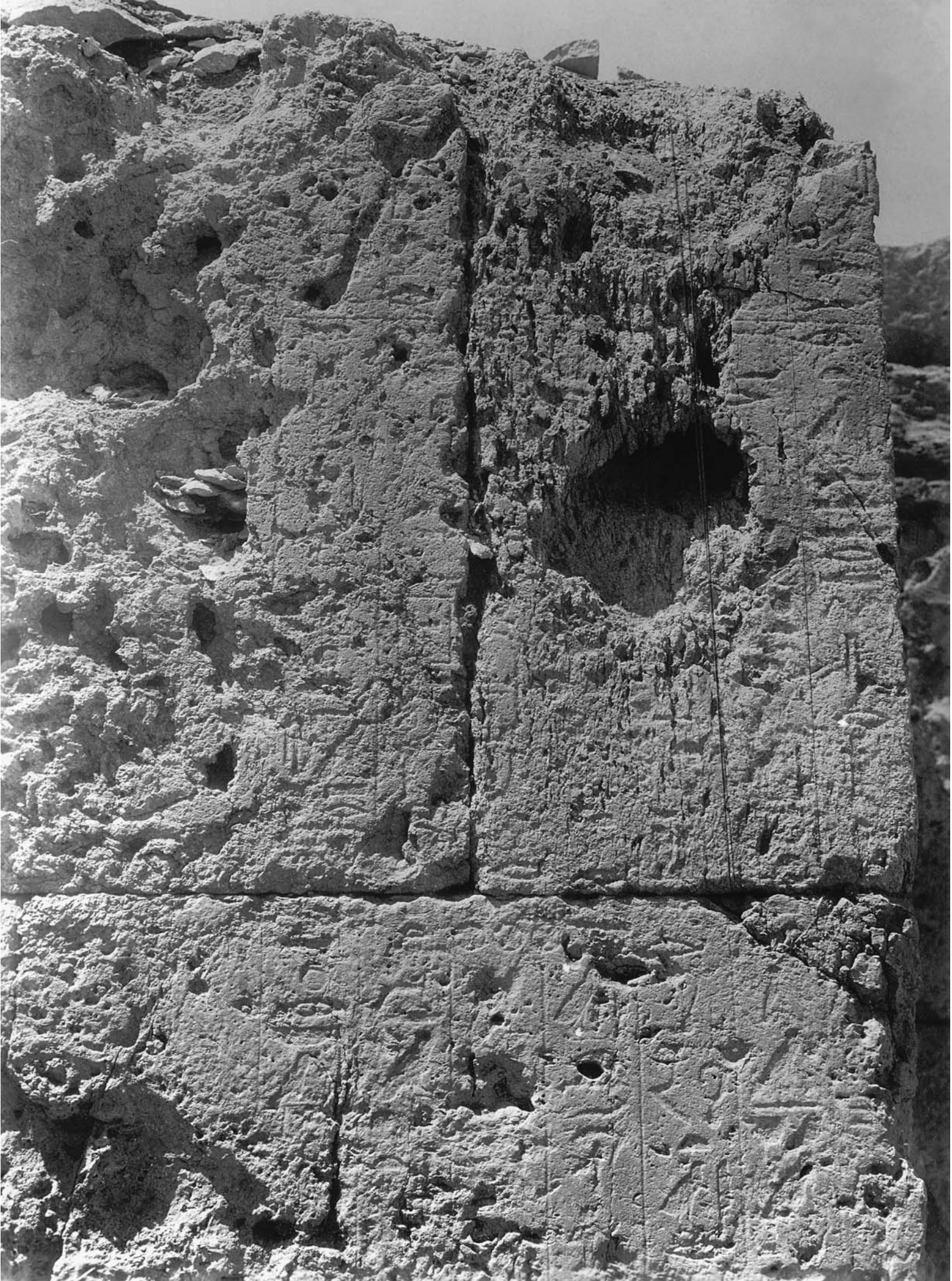
67a. Senedjemib Inti (G 2370), portico, north wall, Inscription B 2, detail. 21 November 1993. Peter Der Manuelian 93.109.30



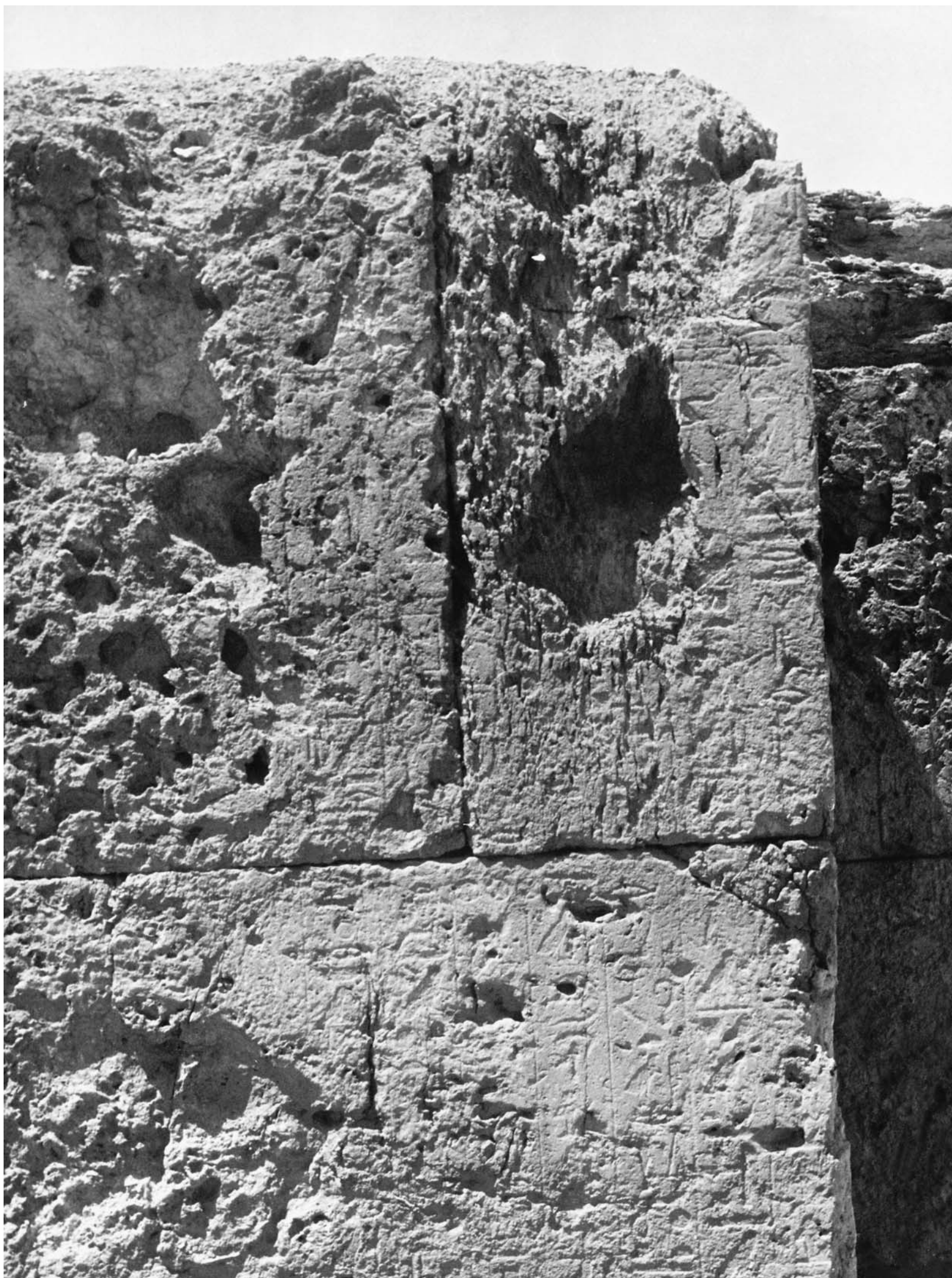
67b. Senedjemib Complex, inscribed stone from court, assigned to top of Inscription C. 19 January 1913. HU-BMFA Exp. Ph. v 1668 [left]



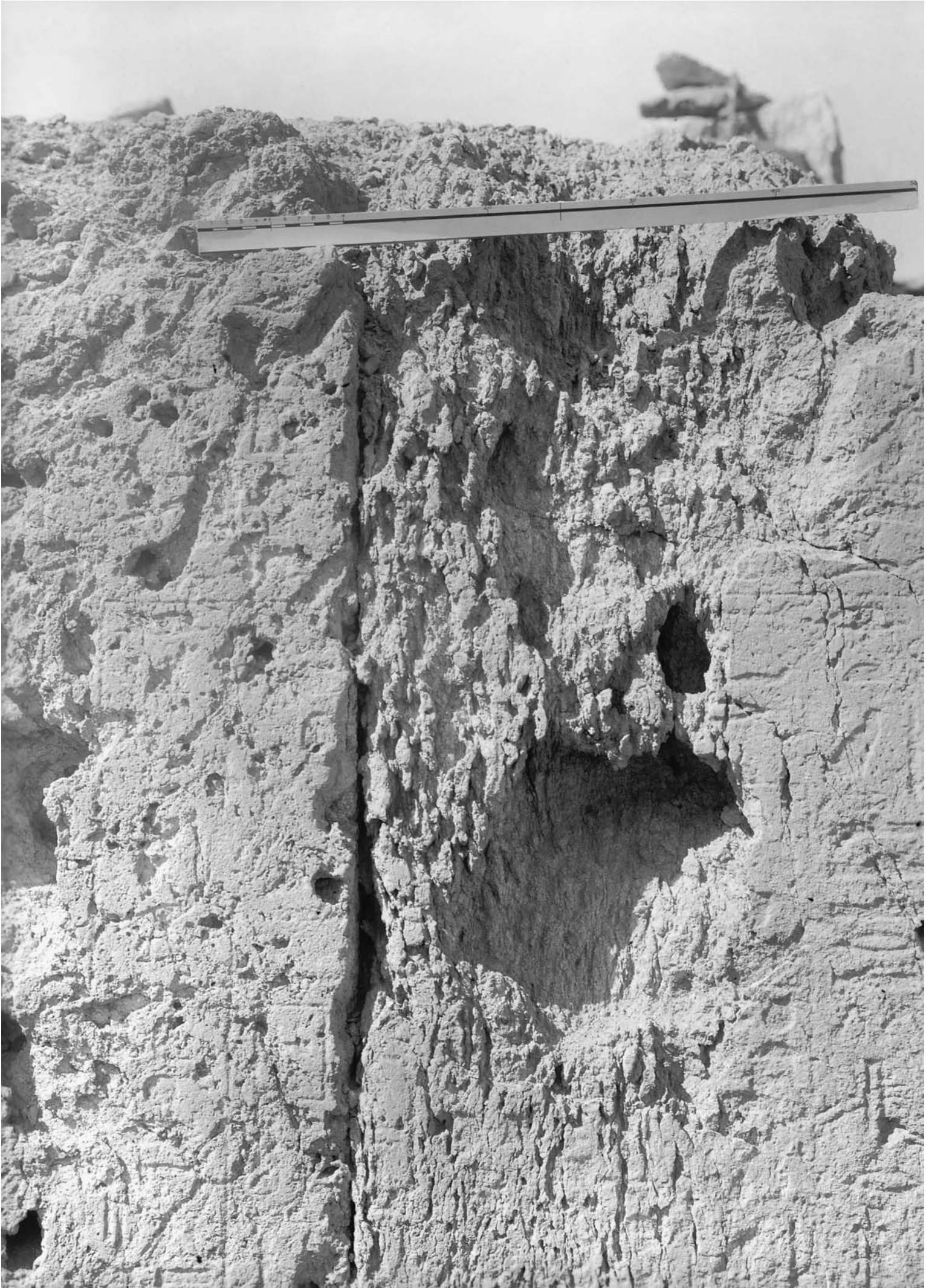
68. Senedjemib Inti (G 2370), facade, south of portico, Inscription C. 22 February 1931. HU-BMFA Exp. Ph. A 6306



69. Senedjemib Inti (G 2370), facade, south of portico, Inscription C, upper part and middle. 26 February 1931. HU-BMFA Exp. Ph. A 6325



70. Senedjemib Inti (G 2370), facade, south of portico, Inscription C, upper part and middle. ADOX. Dr. C. Schleussner Fotowerke GmbH, Frankfurt am Main



71. Senedjemib Inti (G 2370), facade, south of portico, Inscription C, upper part. 23 February 1931. HU-BMFA Exp. Ph. A 6304



72. Senedjemib Inti (G 2370), facade, south of portico, Inscription C, middle and lower part. 1 August 1930. HU-BMFA Exp. Ph. A 5784



73. Senedjemib Inti (G 2370), facade, south of portico, Inscription C, middle part. 23 February 1931. HU-BMFA Exp. Ph. A 6303



74a. Senedjemib Inti (G 2370), facade, south of portico, Inscription C, lower part. 26 February 1931. HU-BMFA Exp. Ph. A 6326



74b. Senedjemib Complex, inscribed stone from court, assigned to top of Inscription C. 19 January 1913. HU-BMFA Exp. Ph. B 1670 (left)





75. Senedjemib Inti (G 2370), portico, south wall, Inscription D. 21 November 1993. Peter Der Manuelian 93.109.34