

probably of father and son, and the father was a brother of Nebemakhet, the owner of one of the few chapels of type RC (ii c) (see also type (7 e)).

c. Chapels of Type (4 b): Transition from Chapels of Types (3) and (4 a) to Chapels of Type (5)

The chapels of types (3) and (4) had the following characteristic features:

- (a) The chapel was in the SE corner of the mastaba with entrance from the east at the north end of the east wall.
- (b) The presence of an exterior subsidiary niche towards the north end of the mastaba.

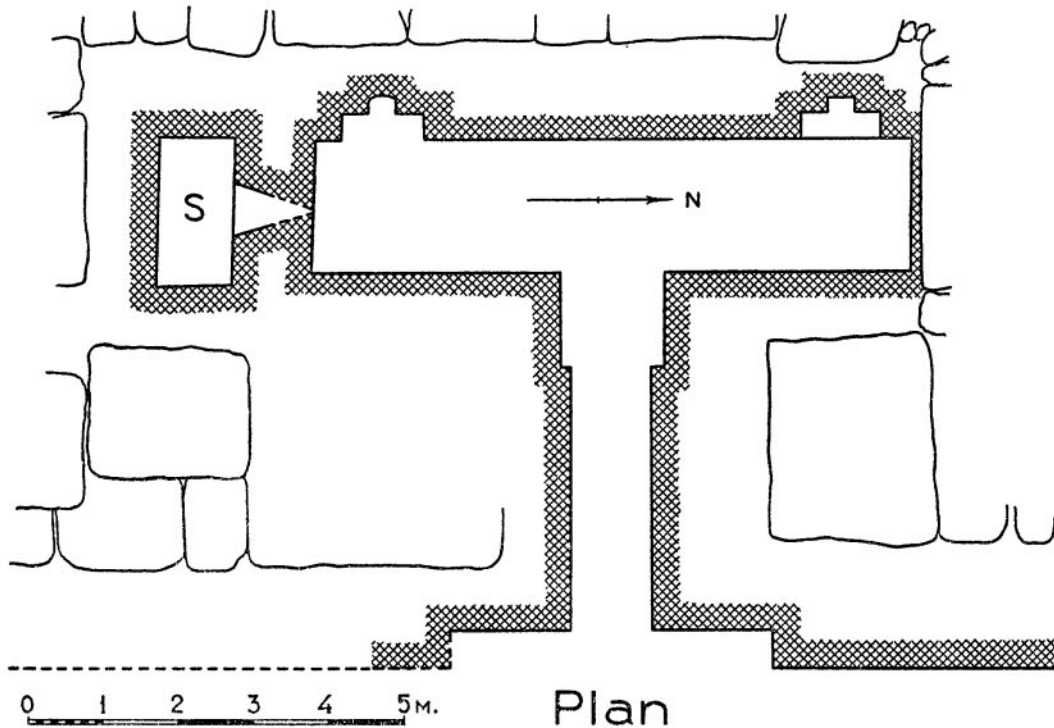


Fig. 152. G 5110

(c) A relation between area of chapel and area of mastaba ranging from  $1/20$  in small mastabas to  $1/300$  in large mastabas.

(d) An offering-room ranging around a mean proportion of  $1/2.66$ .

The corridor chapels of type (5), on the other hand, had:

(a) The chapel more than half the length of the mastaba and running N-S in the eastern part of the mastaba; entered from east or from north or south.

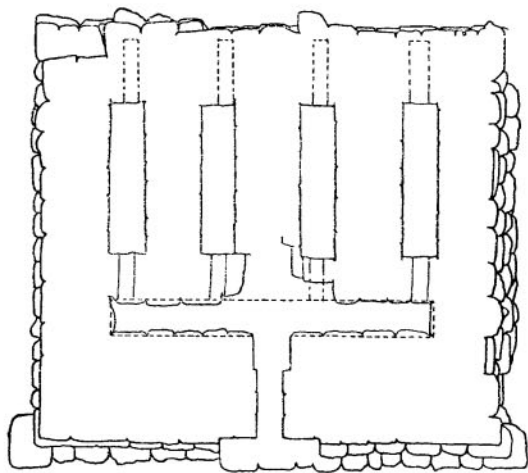
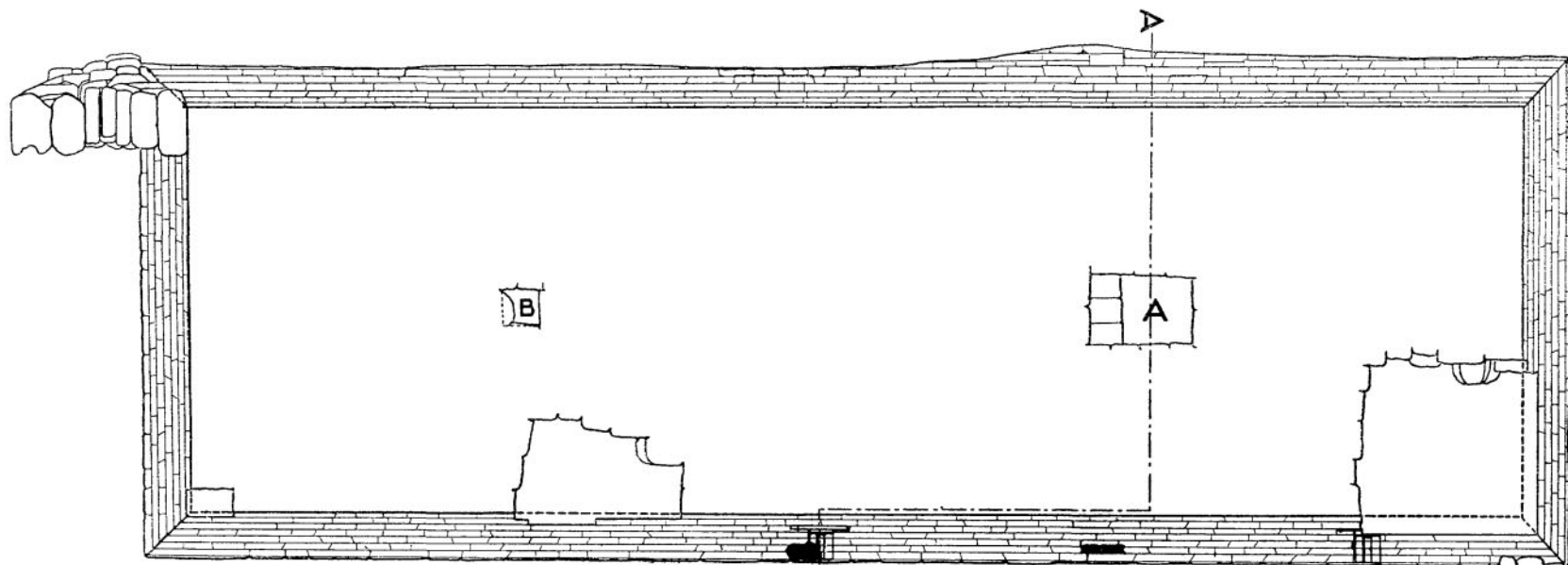
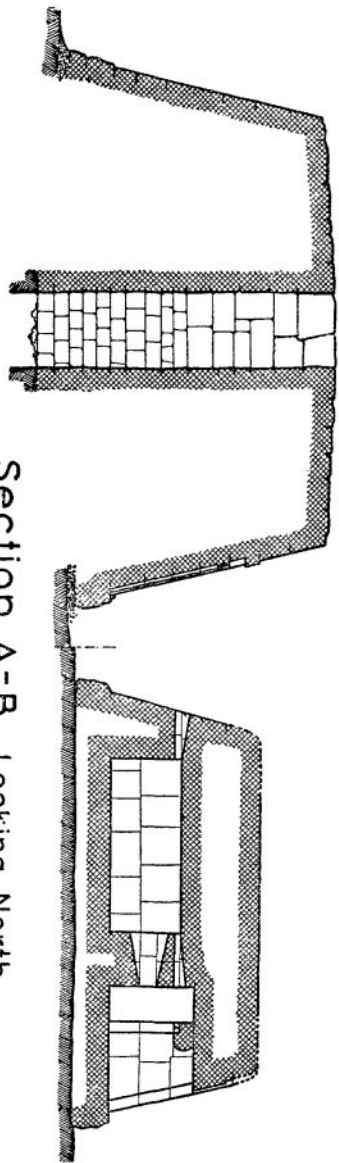
(b) The absence of the exterior subsidiary niche on the north.

(c) A relation ranging from  $1/3$  to  $1/20$ .

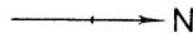
(d) An offering-room of proportions ranging from  $1/3$  upwards to  $1/10$ .

When the chapels which appear to be later than Neferirkara are examined a number are seen to approximate to the chapel form of type (4 a) and others to that of type (5 a). I label these chapels of doubtful form as chapels of type (4 b). This type (4 b) assumes an increased importance at Saqqarah, where it replaced the chapels of type (5) as intermediate between the modified cruciform chapels and the enlarged chapels of types (7) and (12). These Saqqarah chapels are generally longer than the older chapels and appear, in fact, to be short corridor chapels.

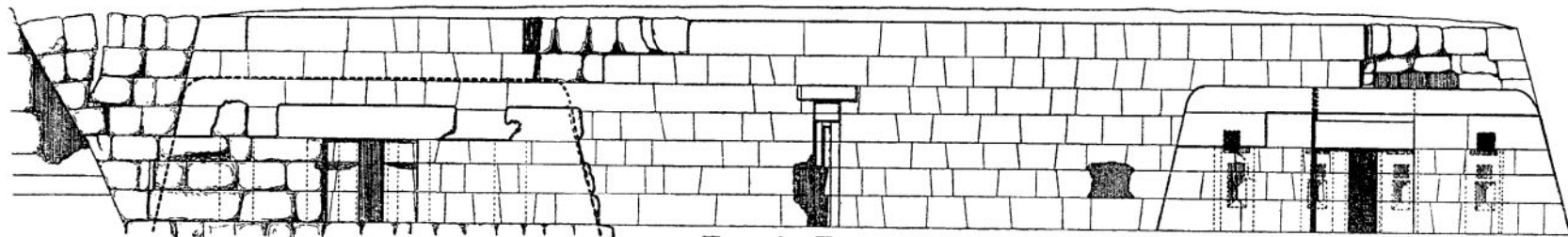
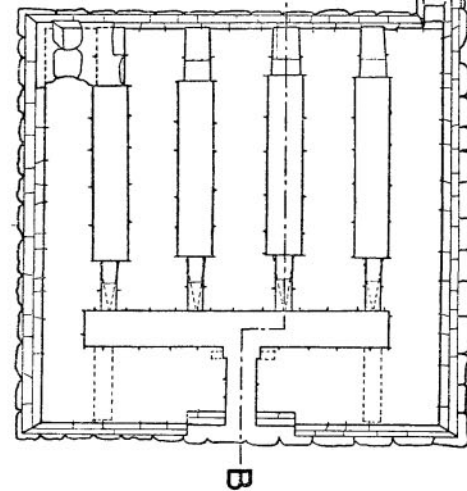
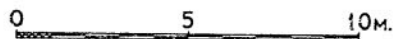
Section A-B Looking North



Plan



G 5230



East Facade

Fig. 153

At Giza the chapels of type (4 b) lack the distinctive north subsidiary niche in the façade of the mastaba and fall into two groups: (1) chapels in mastabas on independent sites which approximate to the chapels of types (3) and (4 a) in position, form, and relation, and (2) chapels also without the north subsidiary niche which are in mastabas attached to other mastabas and therefore of irregular form and relation.

(1) *Chapels of Type (4 b) in Mastabas on Independent Sites*

The most important chapels of type (4 b) are those in the mastabas built by the descendants of the Seshem-nofer family and the descendants of Kanofer of G 2150, east of the Cem. en Échelon in the Western Field. One of the last of these, G 5470 of Rawer II, contained a sealing of Isesy in a burial-chamber, and the whole of the seven mastabas in the group probably range from Neferirkara to Isesy. To these are added a few other mastabas of small size scattered in various parts of the Western Field. The examples excavated by us or reported by Junker are as follows:

- (1) G 5270: Rawer I, *sš r nšwt hft hr, rh nšwt*; son of Seshem-nofer I (5080) and brother of Seshem-nofer III (5170); Junker.  
Mastaba: type VIII a (2), without subsidiary north niche; area, 327.68 sq. m.; prop. 1/2.0; on independent site.  
Chapel: type (4 b), of nummulitic limestone; 3.6 × 1.2 m.; area, 4.32 sq. m.; prop. 1/3.0; relation, 1/78.17; partly decorated.  
Shafts: one large and at least two smaller shafts.  
The two small exterior niches in the east face of the mastaba north of the chapel are neither representative of the large north subsidiary niche, but appear to have been cut later as offering-places for the small shafts.
- (2) G 5280: Peh-n-Ptah, *rh nšwt, sš r n nšwt*; son of *rht nšwt 'Imn-dfj-s* and Seshemnofer II (4940), cousin (?) of Rawer I.  
Mastaba: type VIII b (2); without subsidiary north niche; area, 206.8 sq. m.; prop. 1/1.81; on independent site.  
Chapel: type (4 b), of nummulitic limestone; 3.0 × 0.8 m.; area, 2.4 sq. m.; prop. 1/3.75; relation, 1/86.17; inscribed cross-bar on south niche; serdab with three statuettes.  
Shafts: thirteen shafts, mostly of type B; chief shaft I, type (5 a).
- (3) G 5370: Zaty, *wr mḏ šmḥw, imy-rj kst*; probably son or brother of Rawer I; Junker.  
Mastaba: type VIII a, without subsidiary north niche; area, 224.72 sq. m.; prop. 1/2.0; on independent site.  
Chapel: type (4 b), of nummulitic limestone; 4.6 × 1.6 m.; area, 7.36 sq. m.; prop. 1/2.87; relation, 1/30.53; unfinished decoration.  
Shafts: one or more.
- (4) G 5470: Rawer II, *imy-rj sš s3b, hm ntr M3ct, s3b ḥd-mr, hry šštj n wdḥ mdw štj n ht wrt*; probably son or brother of Zaty; Junker and LG 32.  
Mastaba: type VIII a, without subsidiary north niche; area, 118.4 sq. m.; prop. 1/2.16; on independent site.  
Chapel: type (4 b), with one niche in middle of west wall; 3.14 × 1.56 m.; area, 4.89 sq. m.; prop. 1/2.01; relation, 1/24.21; partly decorated; of nummulitic limestone; also exterior chapel with serdab.  
Shafts: one large shaft and one intrusive shaft; in chief shaft, sealing of Isesy.

- (5) G 2337: no name; probably related to Seshem-nofer family.  
 Mastaba: type VIII a (1); without north subsidiary niche; area, 90.4 sq. m.; prop. 1/1.41; on independent site.  
 Chapel: type (4 b), of nummulitic limestone, destroyed to first course; 1.95 × 0.8 m.; area, 1.56 sq. m.; prop. 1/2.43; relation, 1/57.3; serdab empty.  
 Shafts: four shafts in mastaba; chief shaft A, type 4 a (4).
- (6) G 5340: Ka-seza, *imy-rꜥ wpwt, mdw Kꜣ-hꜥ, smr, hrp* ꜥ; son of Kanofer (G 2150); LG 37; on independent site.  
 Mastaba: type VIII a (1) with addition on south containing a serdab; area of nucleus mastaba, 392.0 sq. m.; prop. 1/2.0; final mastaba area, 459.2 sq. m.; prop. 1/2.34; without subsidiary north niche.  
 Chapel: type (4 b), of nummulitic limestone; 4.0 × 1.6 m.; area, 6.4 sq. m.; prop. 1/2.5; relation, 1/61.27; decorated chapel; long E–W serdab in construction added on south.  
 Shafts: two in N–S axis of nucleus and others in serdab addition.
- (7) G 5350: built against the north end of G 5340; probably belonging to member of family of Ka-seza; Junker.  
 Mastaba: type VIII a (1), without subsidiary north niche; area, 360.68 sq. m.; prop. 1/1.78.  
 Chapel: type (4 b), of nummulitic limestone; 4.8 × 2.0 m.; area, 9.6 sq. m.; prop. 1/2.4; relation, 1/37.45; partly decorated (?); long E–W serdab behind south wall of offering-room.  
 Shafts: one or more shafts in mastaba.

In the Cems. 1000–1100 six chapels of type (4 b) stand south and east of the large mastaba G 1020 with chapel of type (4 a). These mastabas form the basic network of the area between G 2000 and G 1201, and are therefore to be dated earlier than Neueserra.

- (8) G 1024: mastaba: type VII b (1); area, 48.8 sq. m.; prop. 1/1.96; chapel: type (4 b), of nummulitic limestone; upper part destroyed; shafts, three shafts of types 6 b (2), 6 a (2), and 7 x:  
 (a) 3.3 × 1.3 m.; area, 4.29 sq. m.; prop. 1/2.54; relation, 1/13.7.
- (9) G 1031: mastaba: type VII a (1); area, 82.96 sq. m.; prop. 1/1.79; chapel: type (4 b), of nummulitic limestone; upper part destroyed; shafts, five shafts, chief shaft of type 6 b (1); no serdab:  
 (a) 2.5 × 1.0 m.; area, 2.5 sq. m.; prop. 1/2.5; relation, 1/33.18.
- (10) G 1044: mastaba: type VII a (1); area, 76.88 sq. m.; prop. 1/2.0; chapel type: (4 b), of nummulitic limestone; upper part destroyed; shafts, four shafts (small); no serdab:  
 (a) 2.65 × 1.0 m.; area, 2.65 sq. m.; prop. 1/2.65; relation, 1/29.01.
- (11) G 1027: mastaba: type VII b (2); area, 60.75 sq. m.; prop. 1/2.08; chapel: type (4 b); partly destroyed, no decoration; shafts, four shafts, chief shaft, type 4 b (lx); serdab behind south niche with weathered basis of limestone statuette:  
 (a) 2.6 × 1.0 m.; area, 2.6 sq. m.; prop. 1/2.6; relation, 1/23.36.
- (12) G 1008: Shepseskaf-ankh, *nht hrw sb*; mastaba: type VII b (1); area, 33.48 sq. m.; prop. 1/1.5; chapel: type (4 b), with small niche cut in face of nummulitic limestone; partly inscribed; shafts, three shafts, chief shaft type 5 b (2); serdab behind place of south niche connected by slot; niche not cut:  
 (a) 1.7 × 0.65 m.; area, 1.05 sq. m.; prop. 1/2.6; relation, 1/31.88.

(13) G 1101: north end excavated by us and rest by Junker; mastaba: type VII b (2); area, 224.64 sq. m.; prop. 1/1.93; chapel: type (4 b), of nummulitic limestone; not decorated; shafts, excavated by Junker; no serdab:

(a) 3.08 × 1.3 m.; area, 4.0 sq. m.; prop. 1/2.36; relation, 1/56.16.

(14) G 1360: mastaba: type VII a (1); area, 53.0 sq. m.; prop. 1/2.03; chapel: type (4 b), of nummulitic limestone, partly destroyed; shafts, four shafts; chief shaft of type 5 a (2); serdab north of chapel:

(a) 2.5 × 1.0 m.; area, 2.5 sq. m.; prop. 1/2.5; relation, 1/21.2.

Other chapels of similar forms occurred in isolated mastabas as follows:

(15) G 4712: Queen Ni-ma'at-hap: *mst Hr Stḥ wrt htś*.

Mastaba: type VIII c (1), without subsidiary north niche; area, 70.63 sq. m.; prop. 1/1.81; on independent site with G 4714 built in front of it.

Chapel: one-niched chapel of type (4 b), of nummulitic limestone; one niche in south end of west wall (cf. type (3 a)); 2.5 × 1.25 m.; area, 4.38 sq. m.; prop. 1/2.8; relation, 1/16.1; south niche, tablet, and cross-bar decorated; exterior roofed corridor between 4712 and 4714.

Shafts: one shaft in axis north of middle.

(16) G 4714: Princess Nefer-hetepes, *sst nswt nt ht-f*; LG 48.

Mastaba: type VIII c; on independent site; area, 83.75 sq. m.; prop. 1/1.87; without exterior north subsidiary niche.

Chapel: type (4 b), with two niches of nummulitic limestone; 2.5 × 1.4 m.; area, 3.5 sq. m.; prop. 1/1.79; relation, 1/23.93; not decorated, but doorway drum recorded by Lepsius; exterior c.b. chapel of type (1 g).

Shafts: two shafts: A, chief shaft, NW of chapel; B, small shaft south of A.

These two chapels, in tombs of ladies of the royal family, cannot be dated exactly, but were probably of the first half of Dyn. V. The survival of the chapel form in these mastabas was to be expected. One other chapel of type (4 b) was in a mastaba on an independent site and was probably previous to Unis, last king of Dyn. V.

(17) G 2415: Weri and his wife Meti; behind the north end of the Senezem-ib complex among the last mastabas in the group partly overbuilt by mastabas of the Senezem-ib complex.

Mastaba: type VIII b (2); on independent site; area, 46.59 sq. m.; prop. 1/1.56; without subsidiary north niche.

Chapel: type (4 b), with two niches; nummulitic limestone; 3.0 × 1.1 m.; area, 3.3 sq. m.; prop. 1/2.72; relation, 1/14.1; both niches decorated; serdab on north with seven limestone statuettes and traces of four decayed wooden statuettes.

Shafts: six shafts in mastaba.

#### (2) *Chapels of Type (4 b) in Small Mastabas Secondary to Other Mastabas*

The above seventeen chapels might be mistaken for chapels of type (3 a) or (4 a). There are six other chapels in mastabas secondary to other mastabas which are of more doubtful character because of the position of the chapel in the mastaba and its relation to the mastaba.

(18) G 4241: built between north end of G 4240 (Prince Sneferuw-seneb) and G 4250 (probably also of the royal family).

Mastaba: type VIII c (1); area, 47.63 sq. m.; prop. 1/0.85; with chapel in NE corner and small exterior niche south of chapel.

Chapel: type (4 b), of nummulitic limestone; in NE corner of mastaba, with one niche in the middle of the west wall; 2.15 × 1.1 m.; area, 2.37 sq. m.; prop. 1/1.96; relation, 1/20.97; length of chapel about one-third of length of mastaba; not decorated.

Shafts: four shafts, excavated by Junker.

- (19) G 4341: built against the east face of G 4340 (probably member of royal family).

Mastaba: type VIII b; without subsidiary exterior niche; area, 73.2 sq. m.; prop. 1/4.5.

Chapel: type (4 b), of nummulitic limestone; near middle of mastaba; 3.72 × 1.42 m.; area, 5.28 sq. m.; prop. 1/2.42; length of chapel less than one-fourth of length of mastaba; relation, 1/14.55; not decorated, probably with two niches in west wall.

Shafts: two shafts, A south of chapel and B north; A of type 4 c (4).

- (20) G 1411: built against the east face of G 1412 (probably of early Dyn. V).

Mastaba: type VIII b (1), with east wall of z-masonry; with small subsidiary niche south of chapel; area, 29.4 sq. m.; prop. 1/1.66.

Chapel: type (4 b), of nummulitic limestone; two niches in west wall; 2.45 × 0.9 m.; area, 2.2 sq. m.; prop. 1/2.72; relation, 1/13.36; not decorated; length of chapel about one-third of that of mastaba.

Shafts: five shafts in N-S row west of chapel and one north of chapel; chief shaft east, north of chapel, type 5 c (2), on west.

- (21) G 2156: Kaninesuwt II; built against the east face of G 2155; Junker, *Giza*, II, p. 135.

Mastaba: type VIII c (2); without subsidiary exterior niche; area, 27.75 sq. m.; prop. 1/2.42.

Chapel: type (4 b), of nummulitic limestone, with two niches in west wall; 3.4 × 1.3 m.; area, 4.42 sq. m.; prop. 1/2.61; relation, 1/6.73; length of chapel less than half that of mastaba.

Shafts: one shaft south of chapel.

- (22) G 1102: nucleus mastaba on independent site with additions on north and east.

Mastaba: nucleus type, type VIII b (2); without subsidiary north niche; area, 23.12 sq. m.; prop. 1/2.16; final area, 50.97 sq. m.

Chapel: type (4 b), of nummulitic limestone; one niche in south end of west wall; length of chapel about one-third of that of mastaba; 2.2 × 1.0 m.; area, 2.2 sq. m.; prop. 1/2.2; relation, 1/23.16; not decorated; exterior corridor vestibule.

Shafts: two shafts in nucleus; chief shaft on south, type 4 bx.

- (23) G 1315: on higher level over SW corner of G 1161.

Mastaba: type VIII c (1), without subsidiary exterior niche; area, 27.2 sq. m.; prop. 1/1.7.

Chapel: type (4 b), of nummulitic limestone; with no niches preserved; 2.35 × 1.0 m.; area, 2.35 sq. m.; prop. 1/2.35; relation, 1/11.7; length of chapel less than half of that of mastaba; nearly destroyed.

Shafts: five shafts, chief shaft C, type 5 c (5).

Three of these chapels (Nos. 18–20) are probably previous to Neferirkara. Two of these have a small exterior niche south of the chapel (Nos. 18 and 20), not a large north niche so typical of the mastabas with chapels of type (3) and (4 a). Nos. 21 and 22 are probably from the middle of Dyn. V. No. 23 is

probably also from Dyn. V, but it may have been an accidental modification of type (5). Two of these chapels, Nos. 18 and 22, had only one niche. In Nos. 19 and 23 the niches were destroyed, but the rest, Nos. 20 and 21, had two niches.

(3) *Summary of Chapels of Type (4 b)*

The group of chapels of type (4 b) shows a gradual degeneration of older chapels of types (3) and (4). The more pronounced degeneration shown by Nos. 18–23 was probably due to the influence of the chapels of type (5). To this may be ascribed the omission of the north subsidiary niche, the use of chapels with one niche, and the relations. The position of the chapel in the mastaba may also have been affected by those of type (5), but on the other hand, many of the mastabas (Nos. 18–23) were crowded into spaces between older mastabas and the plan of the mastaba with its chapel had to be adapted to the space available. In this way the chapel often occupied an unusual position in the mastaba. The chapels Nos. 1–17 were mostly in large mastabas built on independent sites, and these show the nearest approximation in the form and position of the chapel to those of the earlier chapels.

The size of the mastabas was always an important factor in the selection of the type of chapel. Immediately after Neferirkara and before the reign of Neweserra, chapels of type (5) had been introduced at Giza, but all the examples excavated by us were in small or medium-sized mastabas, and the occurrence of type (5) was confined to such mastabas throughout their use at Giza. In the reign of Neweserra (or more probably shortly after that reign) the E–W offering-room was introduced and led to the development of the two-roomed and multi-roomed chapels of types (7 b)–(7 d). Thus, in Dyn. V we have:

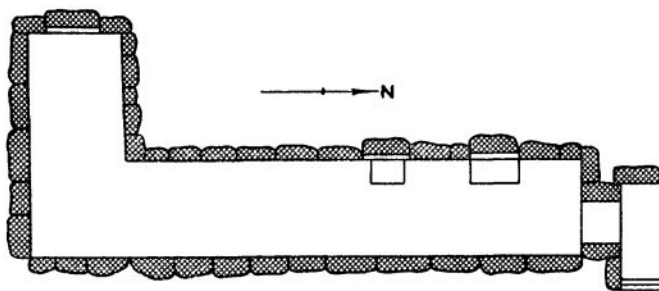
- (a) Large mastabas with chapels of type (4 a).
- (b) Large and small mastabas with chapels of type (4 b).
- (c) Medium and small mastabas with chapels of type (5), and the related types (8) and (9).
- (d) Large, medium, and small mastabas with chapels of type (7).

The term 'large mastaba' is defined as a mastaba with an area of over 100 sq. m. In Dyn. V those with chapels of type (4 b) (see list, Nos. 1–17) include the greater part of the mastabas of that period. The four large nucleus mastabas in the Shepseskaf-ankh complex had originally only two interior chapels both of type (4 a). The other large mastabas almost always contained chapels of type (7), and the largest mastaba, that of Senezem-ib-Yenti with an area of 476.52 sq. m., was dated to the reign of the last king of Dyn. V. The facts show that in the middle of Dyn. V the traditional forms of the transition period from Dyn. IV to Dyn. V were still maintained in the large mastabas made for the descendants of the owners of the large mastabas of the transition period, but were gradually degenerating. Contemporary with the mastabas with chapels of type (4 b), the medium and small mastabas commonly contained chapels of the related types (5), (8), and (9). It is to be noted that wherever mastabas with chapels of types (5), (8), or (9) were in contact with or in proximity to mastabas with chapels of type (4 a) or (4 b), the former were later in date than those with chapels of type (4). For example, G 1026 with a chapel of type (5) was built against and around the north end of G 1008 with a chapel of type (4 b). Similarly, G 1016 with a chapel of type (5 a) was built against the southern end of G 1020 with a chapel of type (4 a), and G 1151 with a chapel of type (5 c) was built against the back of G 1101 with a chapel of type (4 b). It appears, therefore, that in general the chapels of type (5) are later than those of (4 a) and (4 b). The chapels of type (4) continued in use to after the accession of Isesy (see G 5470). The earliest chapel of type (5) was made in the reign of Weserkaf (see G 4631). In the latter part of Dyn. V, probably after Neweserra, the type (7) was introduced and became prevalent for large and medium mastabas thereafter down to the end of Dyn. VI. Contemporary with chapels of type (7), the types (10) and (11) were introduced and used for

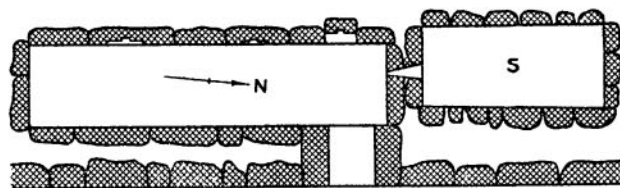
medium and small mastabas. The prevailing chapel types in Dyn. VI were (5), (8), (9), (7), (10), (11), and the complex chapels of type (12).

#### d. Chapels of Dyns. V–VI: Types (5), (7)–(13)

The chapels of types (1)–(3) and RC i are essentially of Dyn. IV, but continue into Dyn. V. Type (4 a) begins in Dyn. IV, but reaches its maximum frequency in the transition period from Dyn. IV to V. The rock tombs of types RC iii–vi were used after Dyn. IV. There remain a great number of chapels of types (5), (7), (13) which were the predominant forms in the mastabas of Dyns. V and VI. A few of these (one of type (5) and one of type (13)) are to be dated to Dyn. IV, but the types as a whole are characteristic of Dyns. V–VI, and are here described as of that period.



Plan 0 1 2 3m.  
Fig. 154. G 1204



Plan 0 1 2 3m.  
Fig. 155. G 1029

#### (1) Mastaba Chapels of Type (5)

The L-shaped chapel of types (3) and (4) lies in the SE corner of the mastaba, which is in effect a two-niched mastaba with the chief, the southern, niche withdrawn within the mastaba. Its length is only a fraction of that of the mastaba, and the relation of its floor area to the area of the mastaba is very large, ranging from  $1/300$  in large mastabas to  $1/20$  in small mastabas. Thus its position and its relation correspond to those of the cruciform chapels of Saqqarah, and, like these chapels of the same period (Dyn. IV), it has the subsidiary northern niche of the two-niched mastabas built or cut in the façade of the mastaba. The two-niched chapel of type (4) at Giza presented in its west wall a reduction in length of the façade of the two-niched mastaba, but was, like the one-niched chapel, still accompanied by the subsidiary northern niche in the façade. All these early L-shaped chapels were of moderate size and present proportions averaging about  $1/2.66$ .

The chapels of type (5) lack the subsidiary north niche, and, being longer, present larger proportions, ranging from  $1/3$  to  $1/13$ . With the increase in size, the relation of the floor area of the chapel to the area of the mastaba also decreases, ranging from  $1/3$  to  $1/20$ . The chapels at Giza are generally of the corridor type with the whole façade of the mastaba represented in the west wall of the chapel. The idea of representing both niches of the two-niched mastaba in the west wall of the chapel was introduced in various types of chapels in Dyn. IV, as has been explained in the preceding section, and it finally came into general use in the L-shaped chapels of type (4 a). It was inevitable that once this idea became operative the tendency would be towards lengthening the chapel to accord with the actual façade of the mastaba. The Saqqarah form of chapel type (4 b) was obviously the result of this tendency.

The chapels of type (5) present a number of variations based on the form of the mastaba façade represented by its west wall, as follows:

Type (5 a): the normal mastaba façade with two niches, two or more pairs of niches, or with irregular niche-work of Dyns. V–VI; see Fig. 154, G 1204, north chapel; Fig. 155, G 1029; Fig. 156, G 1026.



Type (5 b): with one or two niches in the west wall, and at the north end a small one-niched interior chapel (like type (10 a) ); see Fig. 157, G 1011.

Type (5 c): corridor with a deep recess or alcove in the southern end of the west face, and a variable number of other niches or no niche in the west wall; the deep recess or alcove has a stela in its west wall; see Fig. 158, G 1151.

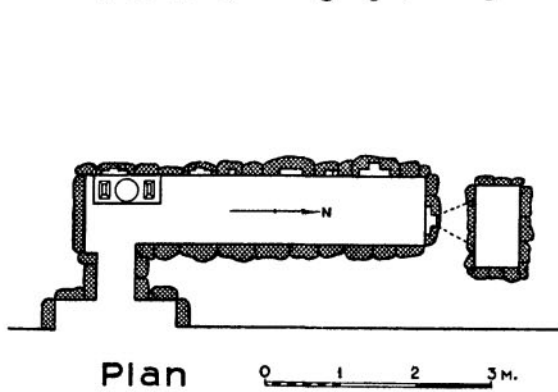


Fig. 156. G 1026

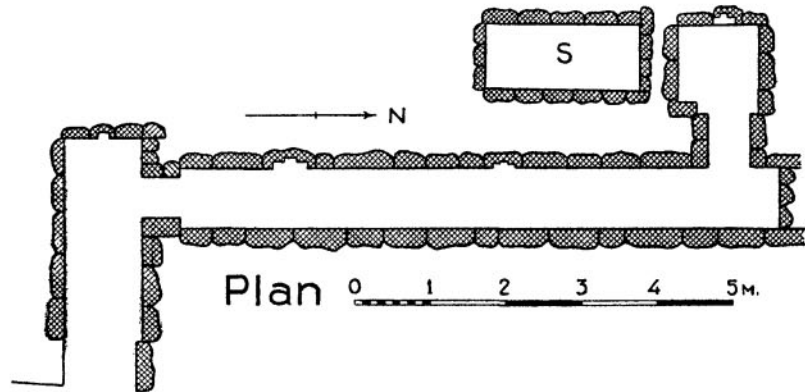


Fig. 157. G 1011

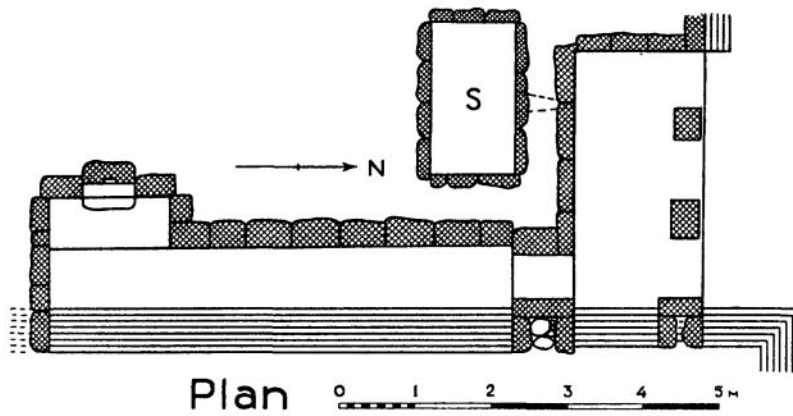


Fig. 158. G 1151

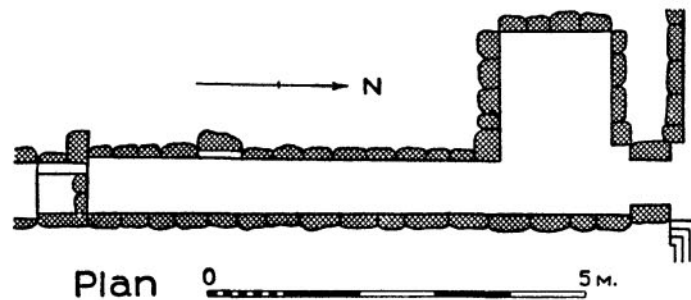


Fig. 159. G 1208

Type (5 d): with an alcove opening westwards in the northern end of the west wall and one or more niches in the rest of the wall; see Fig. 159, G 1208, north.

Type (5 e): a corridor chapel of any of the above forms, but usually of type (5 a), which has at the southern end an alcove opening eastwards.

The corridor chapel was used most frequently for two-shaft or multiple-shaft mastabas. The general principle appears to be that a chapel has a niche or a pair of niches for each of the chief shafts in the mastaba, but occasionally there is only one niche in a multiple-shaft mastaba, or the place of a second niche is taken by the window slot of a serdab. The function of the niche-work was to provide one or more

*ka*-doors for the use of the *ka* or *kas* in the mastaba and the arrangement was left to the arbitrary decision of the owner, who was influenced more or less by previous practice in chapels of types (3) and (4). The other variations probably arose from the influence of other types and may in part have been suggested by the rock-cut tombs of type RC (i c and d). The narrow width of the mastaba corridor and the small size of the alcove would have been necessitated by the length of the stone roofing slabs. Type (5 e) with its eastern alcove was obviously affected by the exterior corridor chapels of type (8), in which the eastward alcove on the south was a natural result of the setting of the mastaba with relation to the mastaba in front of it. At the time of which we are speaking, Dyns. V–VI, examples of all the older types (types (1), (2), (3), and (4)) were to be seen in the old cemetery and chapels of types RC (ii)–(vi) and types (5–8) were being made simultaneously in the necropolis. The person for whom each chapel was constructed and certainly the craftsmen he employed were familiar with a great variety of chapels and, being free within certain functional limits in the choice of the chapel design, were without doubt influenced by the other chapels in the necropolis.

(a) *Chapels of type (5 a).*

Plain interior corridor chapel with one or more niches in west wall.

Examples:

(1) G 4000: Prince Hemyuwen; mastaba finished as type VIII x.

Chapel: type (5) with two niches (chief niche on north); entrance at south end of east wall; exterior c.b. chapel; 36.9 × 1.56 m.; area, 57.56 sq. m.; prop. 1/23.65; relation, 1/24.74; decorated (decorations probably not completed), nearly destroyed; see Fig. 121.

This is the only corridor chapel belonging to any of the nucleus mastabas. The rest are all in outlying mastabas.

No.	Mastaba		Chapel		Area	Prop.	Entrance	
	area	pits serdab	niches	NS × EW			from	Relation
(1) G 4411	39.41	1 1 WS	2	2.2 × 1.01 = 2.26	1/2.21	E at N end	1/17.43	
(2) G 1152	30.64	4 1	..	4.2 × 1.05 = 4.41	1/4.0	E near middle	1/6.65	
(3) G 1012	93.0	8 1 S	2	5.2 × 0.6 = 3.12	1/8.65	E near N	1/29.80	
(4) G 1204	63.25	6 no	2	2.0 × 1.0 = 2.0	1/2	N	1/31.62	
N chapel								
(5) G 3008	61.91	4 ..	2	7.4 × 1.2 = 8.28	1/6.17	N	1/7.47	
(6) G 1029	60.69	4 1 N	3	4.7 × 1.05 = 4.93	1/4.57	E at N	1/12.33	
(7) G 1016	54.12	6 1 NW	2	7.1 × 0.85 = 6.03	1/8.35	E at S	1/8.99	
(8) G 1220	54.12	2 no	1 S	2.9 × 1.2 = 3.48	1/2.42	S	1/15.55	
(9) G 1026	46.8	5 1 N	6	4.5 × 0.9 = 4.05	1/5.0	E at S end	1/11.55	
(10) G 1691	40.2	4 no	2	4.0 × 0.95 = 3.8	1/4.21	N	1/10.57	
(11) G 1158	35.62	3 ..	1?	3.7 × 1.35 = 4.99	1/2.74	N	1/7.13	
(12) G 1234	34.02	2 1 W	1 S	4.85 × 1.2 = 5.82	1/4.04	N	1/5.84	
(13) G 1171	31.08	4 ..	2	4.1 × 1.4 = 6.72	1/3.43	N	1/4.62	
(14) G 1681	30.4	4 ..	2?	2.4 × 0.8 = 1.92	1/3.0	N	1/15.83	
(15) G 1310	29.25	1 no	?	2.9 × 1.2 = 3.48	1/2.42	E at N	1/8.40	
(16) G 1202	27.3	4 no	?	4.1 × 0.95 = 3.89	1/4.31	N	1/7.01	
(17) G 1368	21.9	3 no	3	3.5 × 1.1 = 3.85	1/3.18	E at N	1/5.68	

No.	Mastaba			Chapel		Area	Prop.	Entrance from	Relation
	area	pits	serdab	niches	NS×EW				
(18) G 3090	20.44	3	no	1 N	6.0×0.6 = 3.6	1/10.0	S	1/5.67	
(19) G 1032	20.2	5	no	2?	2.1×1.0 = 2.1	1/2.1	E at N	1/9.61	
(20) G 1019	14.75	3	no	2?	3.9×0.95 = 3.7	1/4.1	E at N	1/3.98	
(21) G 1013	11.9	2	no	2?	2.9×1.0 = 2.9	1/2.9	N	1/4.10	
(22) G 1170	26.18	3	no	4	5.55×0.75 = 4.16	1/7.4	N with 2 ext. rooms	1/6.29	
Total 7.41 sq. m.									
(23) G 4814	ruined	1	..	1	2.4×1.0 = 2.4	1/2.4	E at N		
(24) G 4651	..	..	..	..	..	..	E at N		
(25) G 4861	..	..	..	2	..	..	from N		
(26) S. H., Giza, I, Fig. 161	..	2	..	3	6.15×0.9 = 5.54	1/6.83	from N		
(27) S. H., Giza, I, Fig. 166	97.94	2	1	2	9.3×1.15 = 10.69	1/8.08	from N	1/9.16	
(28) S. H., Giza, I, Fig. 147	8.2?	3	..	2	4.3×1.95 = 8.38	1/2.2	E at S	1/0.97	
(29) Junker, N of G 2155	51.24	2	no	1	2.9×1.2 = 3.48	1/2.41	E at N	1/3.28	
					vestibule 3.0×4.05 = 12.15				

(b) *Chapels of type (5 b).*

Interior corridor chapel with small interior one-niched chapel at north end of west wall.

(1) G 1011	70.4	5	1	2	7.9×0.8 = 6.32	1/9.87	S with E-W	1/9.55
					1.05×1.0 = 1.05	1/1.05	vest. corr.	
(2) G 1010	14.25	2	no	1	4.2×0.55 = 2.31	1/7.64	N in vest. of G 1011	1/4.39
					0.85×1.1 = 0.93	1/0.77		

(c) *Chapels of type (5 c).*

With deep recess or alcove, opening westwards at south end of west wall; stela in west end of recess.

The corridor with deep recess is related to type (7 b), but has no doorway at south end of the N-S corridor. It also has some relation to type (10) with a square room with one or two niches approached by a long N-S corridor. The recess in type (5 c) varies considerably in size, and in the examples with the largest recesses the form can hardly be distinguished from type (7 b). The examples of type (5 c) are as follows:

(1) G 4631	115.5	8	no	6?	14.9×0.8 = 11.92	1/18.63	S	1/9.61
(2) G 1151	52.5	2	1	1	6.1×0.8 = 4.88	1/7.62	N in pill.	
					1.6×0.7 = 1.12	1/2.28	portico	1/8.74
(3) G 1204 S	63.25	6	no	3	6.05×1.3 = 7.86	1/4.65	N beside N	
					1.3×1.7 = 2.21	1/0.76	chapel	1/6.28
(4) G 1211	40.3	4	1	2	4.8×0.9 = 4.32	1/5.33	S	1/8.19
					0.8×0.75 = 0.6	1/1.09		
(5) G 4611	109.2	?	1	2	9.4×1.4 = 13.16	1/6.71	E at S	1/8.3
(6) S. H., Giza, I, Fig. 171		3	1	1	6.4×0.95 = 6.08	1/6.74	E(m): sub. S niche	

*(d) Chapels of type (5 d).*

With alcove in west wall of corridor at north end.

No.	Mastaba			Chapel			Prop.	Entrance from	Relation
	area	pits	serdab	niches	NS × EW	Area			
(1) G 1208 N	71.07	8	no	1	7.2 × 0.7 = 5.04	5.04	1/10.3	N: see S chapel	1/9.36
(2) G 1103	16.8	3	no	2	1.5 × 1.7 = 2.55	2.55	1/0.88	E at S	1/8.03
					2.1 × 0.8 = 1.89	1.89	1/2.62		
(3) G 4561	..	..	..	1 (W)	0.8 × 0.25 = 0.2	0.2	1/3.2	from N	
				1 (alc)	..	..	..		

*(e) Chapels of type (5 e).*

Corridor of type (5 a) with alcove in E wall on the southern end.

(1) G 3011	62.4	7	1	2	7.8 × 1.1 = 8.58	8.58	1/7.1	E at N, with	1/4.77
					2.1 × 2.1 = 4.5	4.5	1/1.0	E-W vest. corr.	

This form is obviously derived from the form of the exterior chapel of type (8 a-d), with east alcove.

(2) For chapels of type (6) see pp. 247-249, above.

*(3) The Interior Mastaba Chapel of Type (7): E-W Offering-room*

The distinguishing mark of the chapel of type (7) is the E-W offering-room with one niche (rarely two niches) in the narrow west wall. The E-W offering-room first appears in the outer offering-place of the pyramid temples of Dyn. IV, where it represents the inner niche of the *ka*-door, or more properly of the simplified great door. In the Valley Temple of Chephren, and in both the Valley and the Pyramid Temples of Mycerinus, the E-W offering-room opens in the middle of a N-S pillared portico or hall. In the two Mycerinus temples this portico is in the western side of a great open court with panelling around its sides. In the Chephren Valley Temple the E-W room opens from a N-S hall. In the Chephren Pyramid Temple the outer offering-place consists of five E-W rooms, opening on a narrow N-S corridor which is the western arm of the corridor which surrounds the great open court with its twelve statues of Chephren.

The E-W offering-room appears in pyramid temples of Dyn. V as an inner offering-room with asymmetrical approach. It lies in the E-W axis of the pyramid with its west end against the sloping face of the pyramid (see Borchardt, *Das Grabdenkmal des Königs Sahu-Ré*, Blatt 2, where he gives plans of the temples of Sahura, Neferirkara, and Newserra).

At Giza, the E-W room with one or two niches in the west wall appears first in private tombs in the rock-cut tombs of type RC (i a) and (i b), but this type is probably based on the L-shaped chapel with exterior stone rooms, and may not be directly correlated to the E-W offering-rooms of the pyramids of Dyn. V. The earlier examples undoubtedly precede those pyramid chapels in date.

In the Giza mastabas the chapels of type (7) with E-W offering-room do not appear until after the reign of Newserra, when they are by no means so numerous as chapels of types (5) and (8). An indication of the date of the introduction of type (7) is given by a comparison of the complexes of Shepseskaf-ankh (G 6010-6040), and of Senezem-ib = Yenti (G 2370-2387). The former is dated approximately to the time from Neferirkara to Newserra and contains no elements associated with type (7). The

other complex, dated from the latter part of the reign of Isesi to the end of Dyn. VI, contains almost exclusively chapels of type (7). At Abusir, Borchardt found a small number of mastaba chapels in the cemetery attached to the pyramid of Neweserra. These are in general corridor chapels, but in the mastaba of Zaza-em-ankh (Borchardt, *Ne-user-Ré*, Pl. 22) the chapel consists of three parallel E–W rooms. The entrance in the E–W medial axis opens into an asymmetrical E–W vestibule corridor, from which two doorways, one in the east end of the north wall and the other in the east end of the south wall, open into single E–W offering-rooms with stela in the west wall. The northern was inscribed in the name of the husband and the southern in the name of the wife (a princess, daughter of Neweserra). This mastaba was erected late in the reign of Neweserra or more probably after that reign.

Many of the multiple-roomed chapels of both Giza and Saqqarah are designed with one or more E–W offering-rooms. But the smaller chapels, those with a single chamber and those with two rooms, vary in both form and frequency at the two sites. Subdividing type (7) to include the examples at both Saqqarah and Giza, the following variations are to be noted:

- Type (7 a): single E–W offering-room opening directly from the outside of the mastaba or by means of a long narrow connecting passage.
- (7 a 1): E–W offering-room in the SE corner of the mastaba and entered directly from the E; examples at Saqqarah.
- (7 a 2): single E–W offering-room entered from the north or south by doorway in face of mastaba; two examples at Giza and one at Saqqarah.
- (7 a 3): E–W offering-room in the SE corner of the mastaba but entered from the north by a long narrow corridor with its entrance in the north face of the mastaba or at the north end of the east wall; examples at Saqqarah only.
- (7 a 4): E–W offering-room in other parts of the mastaba entered by long narrow corridor or passage; one example at Saqqarah.
- (7 b): two-room chapel consisting of E–W offering-room and N–S room; the N–S room, also an offering-room, lies north or south of the east end of the E–W offering-room with its false-door stela. Common type at Giza; rare at Saqqarah.
- (7 c): chapel with three or more rooms with a two-roomed nucleus similar to (7 b).
- (7 d): multiple-roomed chapel with nucleus of one E–W offering-room and with one or more other rooms variously placed.
- (7 e): complex chapel based on a cruciform nucleus consisting of an E–W offering-room opening in the middle of the west wall of a N–S hall.

The use of the E–W offering-room was probably established by the pyramid temples of the first half of Dyn. V. It was a little later than the introduction of the corridor chapel, which was the prevailing type for small mastabas of Dyns. V and VI. The two-room type may be based on the E–W room with asymmetrical approach in the pyramid temples of early Dyn. V, but it may have been influenced by the type RC (i). The type (5 c) with recess or alcove on the south presents a reduction of type (7 b), and the two are without doubt closely related, especially as some examples of type (7 b) have no door-jambes between the two rooms (see also (7 e)). The cruciform chapel type (7 e) is to be compared with the cruciform chapels of type RC (ii) but is distinguished from it by the E–W offering-room, and is therefore apparently a reversion to the form of the outer offering-place of the pyramid temples of Dyn. IV.

It has been said that the chapels of type (5) present an expansion of the relief scenes due to the influence of the rock-cut chapels at Giza. In type (7) this expansion of wall surface available for reliefs is

carried much farther and the complex chapels of that type range in floor area from  $1/5$  to  $1/10$  of the area of the mastaba. The chapels of type (5) range from  $1/3$  to  $1/31$  of the mastaba, and those of types (3) and (4) only from  $1/20$  to  $1/300$ .

The list of chapels of type (7) at Giza (as far as now at my disposal) is as follows (and some examples from other cemeteries with running numbers in small Roman numerals):

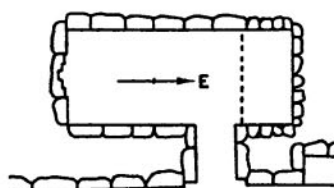
(a) *Chapels of type (7 a): with single E–W offering-room.*

(1) G 1313: *Iy-zefa, rḥ nšwt, ḥry ššt; n pr . . . , ḥnty-š pr-c;*; offering formula in the name of Osiris.

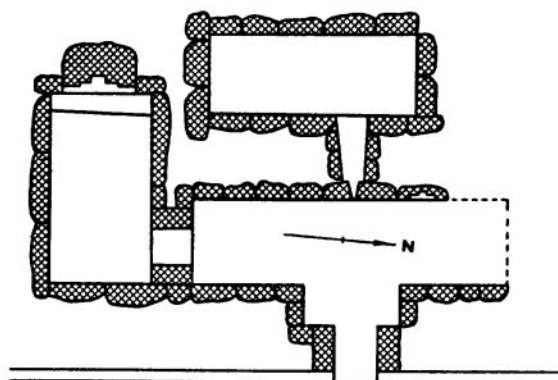
Mastaba type VIII (cl); area, 15.75 sq. m.; prop. 1/0.28.

Chapel, single E–W room entered from south at east end of south wall;  $1.25 \times 2.3$  m.; area, 2.87 sq. m.; prop. 1/5.43; in west end a decorated false-door stela; decorated doorway; relation, 1/5.49.

See Fig. 160.



Plan 0 1 2 m.  
Fig. 160. G 1313



Plan 0 1 2 3 m.  
Fig. 161. G 1047

(2) G 2375 a: *Ankh-ir-Ptah, sb r; Nhn.*

Mastaba type VIII c (1), built in the court of G 2375; area, 23.98 sq. m.

Chapel, E–W offering-room entered at east end of south wall;  $1.4 \times 3.3$  m.; area, 4.62 sq. m.; prop. 1/0.42; relation, 1/5.19; in west end a monolithic stela against the façade of G 2375.

(b) *Chapels of type (7 b): two rooms, E–W offering-room and N–S offering-room.*

(1) G 1047: *Min-ankh, ḥm ntr Mn-kw-ḥr-ntry-šwt, ḥm ntr N-wšr-r-c-mn-šwt, imy-r; niwt mšwt.*

Mastaba type VIII c (2); area, 66.79 sq. m.; prop. 1/1.8.

Chapel, with E–W room entered at east end of north wall, with false-door stela in west end;  $1.33 \times 2.25$  m.; area, 2.99 sq. m.; prop. 1/0.59.

(b)  $3.4 \times 1.1$  m.; area, 3.74 sq. m.; prop. 1/3.09; with entrance from east near north end of east wall; with one niche in north end of west wall and serdab behind that wall with slot opposite entrance.

Total area, 6.73 sq. m.; three burial-places, one of type 9; relation, 1/9.93.

See Fig. 161.

(2) G 5234: east of G 5230 (Khnumbaf).

Mastaba type VIII c;  $8.7 \times 6.0$ ; area, 52.2 sq. m.; prop. 1/1.45.

Chapel, of type (7 b):

(a) entered from north, near east end of north wall;  $3.22 \times 1.55$  m.; area, 4.99 sq. m.; prop. 1/2.08.

(b) entered from east, near north end of east wall;  $5.35 \times 0.96$  m.; area, 5.13 sq. m.; prop. 1/5.56.

Total area, 10.12 sq. m.; relation, 1/5.16.

With open court on east of mastaba containing sloping-passage tomb of type 9 and two small pits; serdab behind west wall of b.

(3) G 5235: north of G 5234.

Mastaba type VIII c; area, 57.6 sq. m.; prop. 1/1.6.

Chapel, two rooms of type (7 b) but without door-jambs between the two rooms:

(a) 1.45 × 3.25 m.; area, 4.71 sq. m.; prop. 1/2.24; with niche in west end and doorway (without jambs) in east end of north wall.

(b) 3.27 × 1.02 m.; area, 3.33 sq. m.; prop. 1/3.21; with entrance from east at north end of east wall; serdab at north.

Total area, 8.04 sq. m.; relation, 1/7.16.

Chief burial-place, sloping passage of type 9 opening in court.

(4) G 5330: Ihy; LG 41; south of G 5334.

Mastaba type VIII c; area, 250.27 sq. m.; prop. 1/1.81.

Chapel, two rooms of type (7) partly destroyed:

(a) 1.5 × 4.3 m.; area, 6.45 sq. m.; prop. 1/0.35; with shallow stela at west end (see *LD.* II. 88 a); entered at east end of north wall.

(b) 3.05 × 1.55 m.; area, 4.73 sq. m.; prop. 1/1.97; partly destroyed; entered from the east at north end of east wall; entrance on mastaba façade north of middle.

Total area of a and b, 11.18 sq. m.; relation, 1/22.39.

(5) G 4813.

Mastaba type VIII c; 10.2 × 7.4 m.; area, 75.48 sq. m.; prop. 1/1.38.

Chapel, two rooms of type (7 b):

(a) 1.6 × 3.5 m.; area, 5.6 sq. m.; prop. 1/0.49; with shallow false door at west; entered from north at east end of north wall.

(b) 6.5 × 1.15 m.; area, 7.47 sq. m.; prop. 1/5.65; with two monolithic stelae in west wall; entered from the north.

Total area, 13.07 sq. m.; relation, 1/5.77.

(6) G 4721: built against the south end of G 4730.

Mastaba type VIII c; area, 43.65 sq. m.; prop. 1/0.54.

Chapel, two rooms of type (7 b):

(a) 1.32 × 2.85 m.; area, 3.76 sq. m.; prop. 1/0.46; with false door in west end; entered from north at east end.

(b) 1.68 × 1.1 m.; area, 1.84 sq. m.; prop. 1/1.53; without niches; entered from east at north end; serdab behind west wall.

Total area, 5.60 sq. m.; relation, 1/7.79.

(7) G 5411: on independent site, on rock knoll at SW corner of First Pyramid.

Mastaba type VIII e-c; area, 78.1 sq. m.; prop. 1/1.55.

Chapel, two rooms of type (7 b):

(a) 1.5 × 2.52 m.; area, 3.78 sq. m.; prop. 1/0.68; with false-door stela at west end; entered from north in east end of north wall.

(b) 6.4 × 1.0 m.; area, 6.4 sq. m.; prop. 1/6.4; probably with one niche in west wall at north; one serdab; entered from east in north end of east wall.

Total area, 10.18 sq. m.; relation, 1/7.67.

- (8) G 5340: Prof. Junker; north of No. 2 above.  
 (9) A mastaba between G 5140 and G 5240; Prof. Junker.  
 (10) G 2401: on independent site.  
 Mastaba type VIII v (1); area, 103.74 sq. m.; total area, 135 sq. m.  
 Chapel, two rooms of type (7 b):  
 (a) 1.7 × 5.1 m.; area, 8.67 sq. m.; prop. 1/0.33; entered from (b) by doorway (without jambs) in east end of north wall.  
 (b) c. 6.0 × 1.1 m.; area, c. 6.0 sq. m.  
 Total area, 14.67 sq. m.; relation, 1/9.20.  
 Entered from east by doorway near north end of east wall.

(c) *Chapels of type (7 c): two-roomed nucleus like (7 b) with other rooms.*

- (1) G 2370: Senezem-ib = Yenti; end of Dyn. V.  
 Mastaba type VIII a; area, 476.52 sq. m.; prop. 1/1.09.  
 Chapel; type (7 c); with N-S anteroom, great pillared hall, and small portico; all wall spaces decorated except great hall of pillars.  
 (a) 2.05 × 6.35 m.; area, 13.02 sq. m.; prop. 1/0.32; with elaborate false-door stela in west end.  
 (b) 4.72 × 1.55 m.; area, 7.32 sq. m.; prop. 1/3.05; with two niches in west wall and serdab behind west wall with two slots; entered from east at north end of east wall.  
 (c) 3.7 × 1.55 m.; area, 4.73 sq. m.; with outer entrance from east at north end and doorway to pillared hall (d) at north end.  
 (d) pillared hall; 5.57 × 10.70 m.; area, 59.60 sq. m.; eight pillars in two E-W rows of five each; with large serdab west of west wall with three slots.  
 (e) portico with two columns; 6.25 × 1.9 m.; area, 11.88 sq. m.  
 Total floor area, 96.55 sq. m.; relation, 1/4.93.  
 On the east is a great stone-paved court around and in which were built the later mastabas of the family: this court opened on the east by a passage doorway sloping down to the ground in front; the burial-place of Senezem-ib = Yenti was a sloping passage of type 9 with opening under a wall of the court north of the outer entrance.

See Fig. 162.

- (2) G 5520 = G 2342 (= LG 28): S-ankh-n-ptah; on independent site built on debris south of Senezem-ib = Yenti.  
 Mastaba, a nucleus of type VIII c (2); area, 62.7 sq. m.; prop. 1/2.0; with interior chapel of type (5); increased by an addition on east containing a chapel of type (7 c) and a serdab; total area, 123.21 sq. m.  
 Chapel, four rooms:  
 (a) original chapel of type (5); c. 7.2 × 1.6 m.; area, 11.52 sq. m.; prop. 1/4.5; relation, 1/5.44.  
 (b) N-S hall in front of doorway to (a), connecting it with exterior chapel; 5.5 × 2.0 m.; area, 11.0 sq. m.; entered from (c) by two doorways, one in each end of east wall.  
 (c) long narrow N-S vestibule corridor, entered from east; 7.0 × 1.18 m.; area, 8.26 sq. m.; two doorways to (b) in west wall; doorway to (d) in south wall; the east wall north of the entrance lined with white limestone.



- (d) E-W offering-room, with false-door stela in west end lined with white limestone;  $1.35 \times 3.3$  m.; area, 4.45 sq. m.; prop. 1/0.4; entered by doorway in east end of north wall.

Total area of (b)–(d), type (7 c), 27.15 sq. m.

Total area of both chapels, rooms (a)–(d), 38.67 sq. m.; relation, 1/3.18.

See Fig. 163.

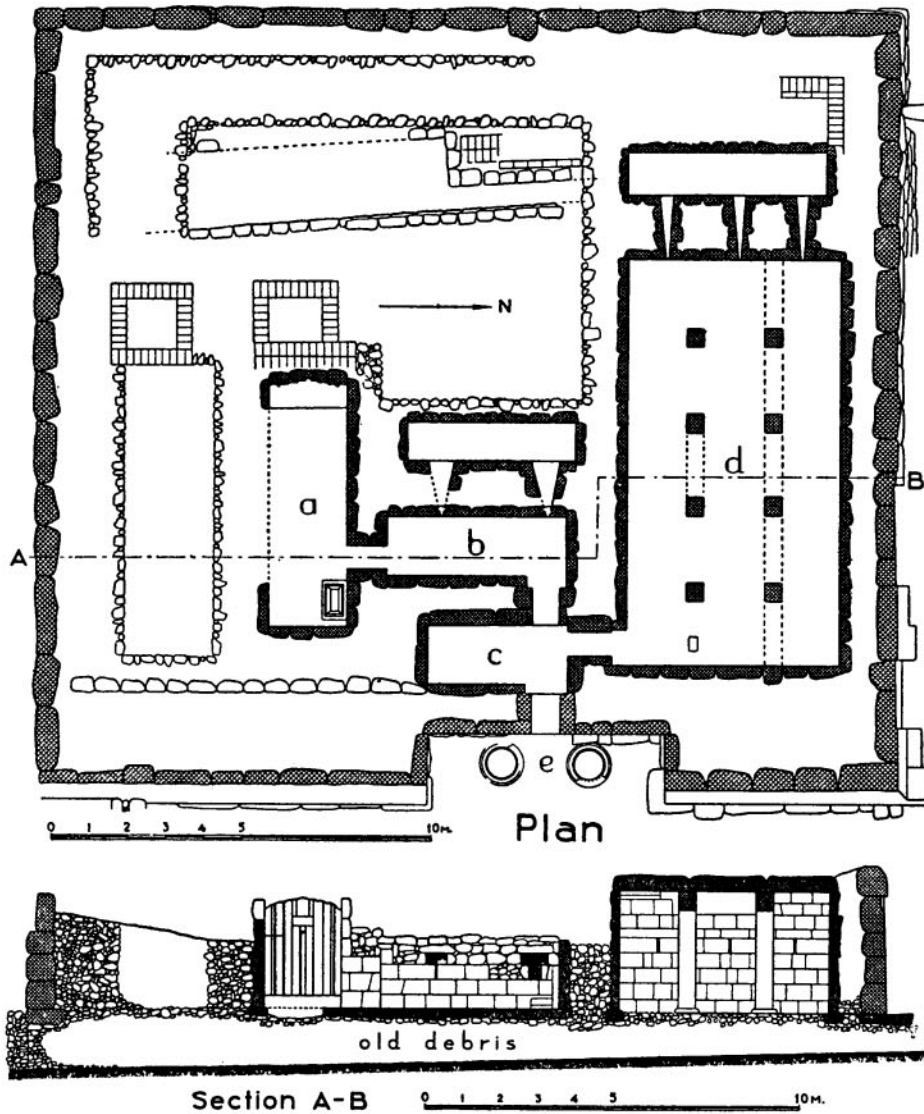


Fig. 162. G 2370

- (3) G 5332 = LG 39: east of G 5230.

Mastaba type VIII c; area, 162.0 sq. m.; prop. 1/0.92.

Chapel, type (7 c) with one additional room and pillared portico:

- (a)  $2.0 \times 6.9$  m.; area, 13.8 sq. m.; prop. 1/0.29; with compound niche in west end; doorway to (b) in east end of north wall.
- (b)  $4.25 \times 1.75$  m.; area, 7.44 sq. m.; prop. 1/2.43; with doorway to (c) in west wall at south end.
- (c)  $1.75 \times 4.3$  m.; area, 7.53 sq. m.; with serdab behind north wall and west of north end of (b).
- (d) pillared portico:  $4.4 \times 2.6$  m.; area, 11.44 sq. m.; with two pillars at north end of

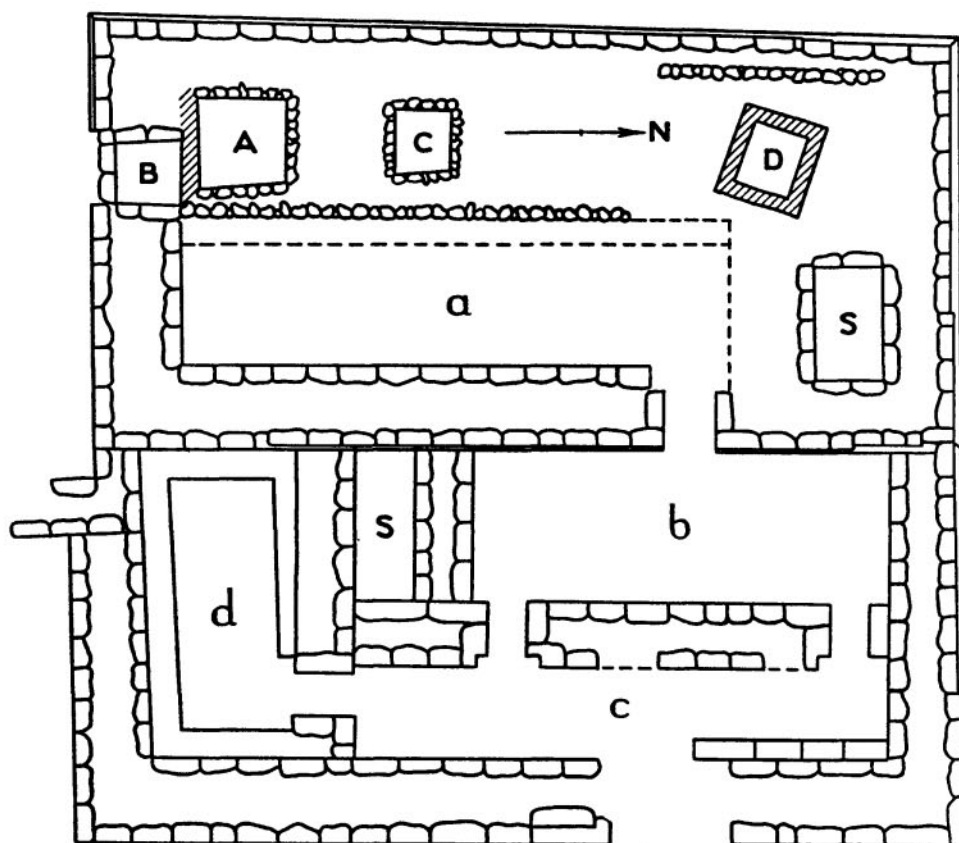
M m

east façade; entrance doorway in middle of west wall, enters (b) in middle of its east wall.

Total area, (a)–(c), 28.77 sq. m.

Total area, (a)–(d), 40.21 sq. m.; relation, 1/4.22.

- (4) G 2381: built on south end of platform of Senezem-ib complex, against the east face of G 2370. Mastaba type VIII a (1), nearly destroyed; min. area, 79.4 sq. m.; irregular form.



Plan

0 1 2 3 4 5m

Fig. 163. G 2342 = G 5520

Chapel, type (7 c), with two-roomed nucleus and at least one other room:

- (a) E–W offering-room, 1.5 × 5.25 m.; area, 7.87 sq. m.; prop. 1/0.28; entered from (b) by doorway (with jambs) in east end of north wall.  
 (b) width, 1.1 m.; traced northwards for several metres.  
 (c) the reliefs recovered from the debris present a number of scenes which require a third room and probably a portico.

The total area cannot be estimated with certainty.

This chapel was built before the year 19 of Pepy I and decorated partly before and partly after that date.

(d) *Interior mastaba chapels of type (7 d): E–W offering-room with other rooms presenting a modification of type (7 c).*

- (1) G 2378: Senezem-ib = Mehi; on north side of paved court of Yenty.

Mastaba type VIII a; 23 × 12 m.; area, 276.0 sq. m.; prop. 1/1.92.