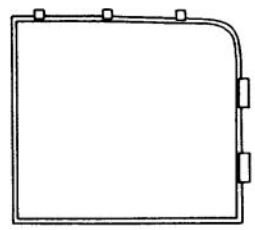
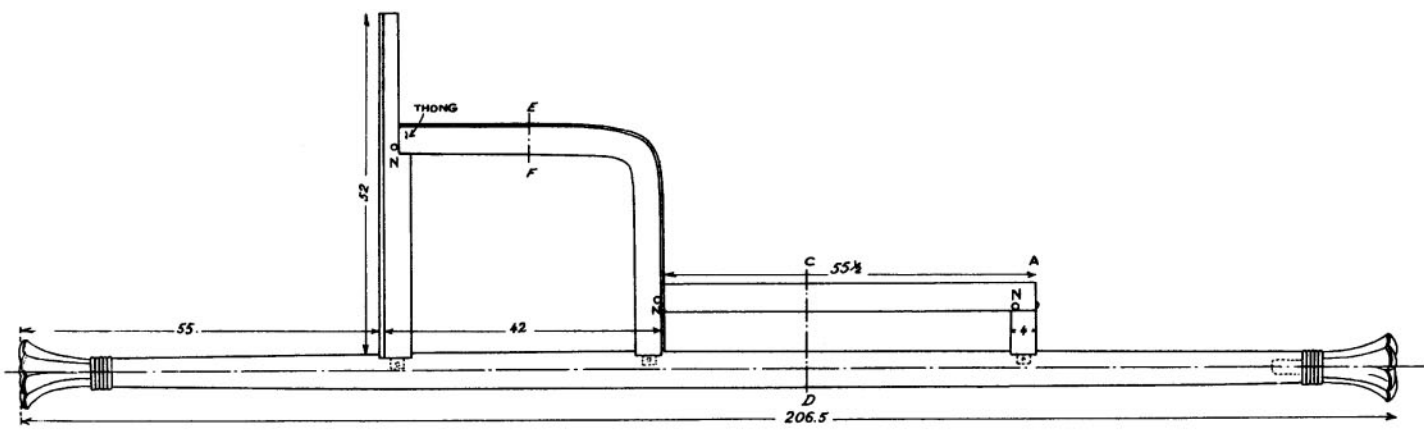


Fig. 33



PANEL SHOWING TENONS IN BEVEL PLAN

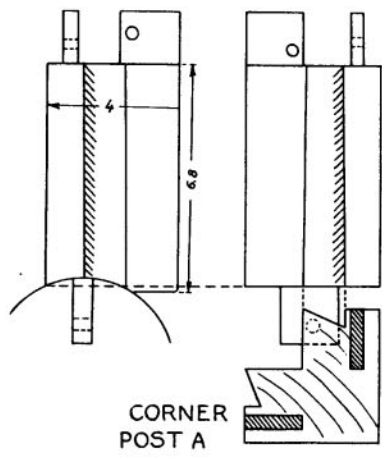
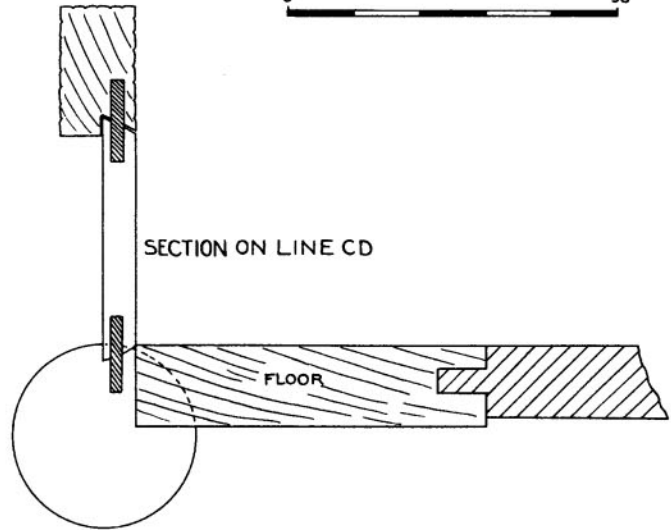
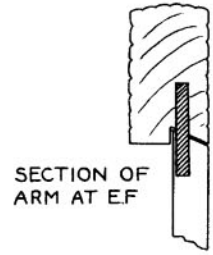
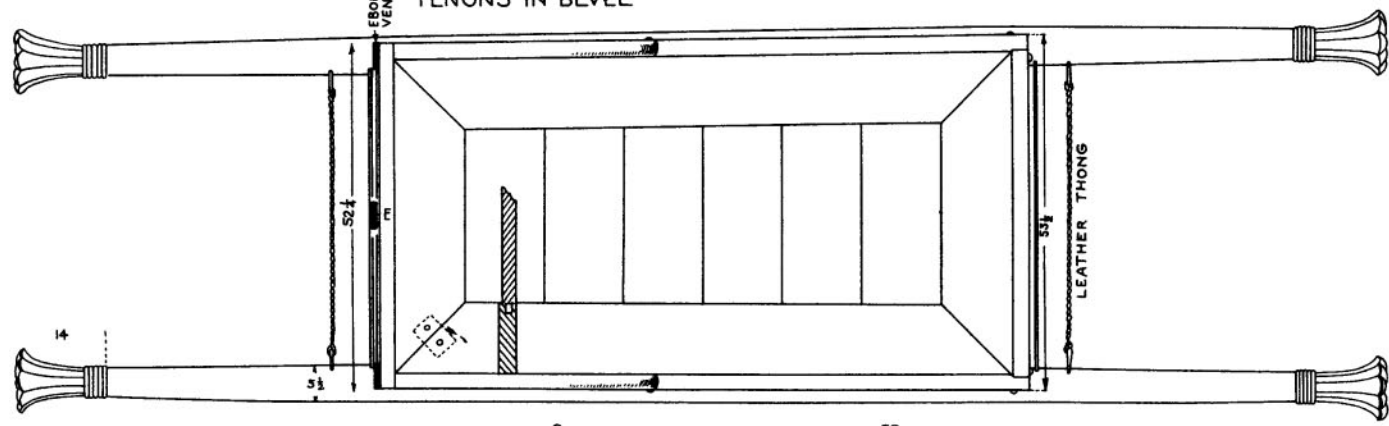
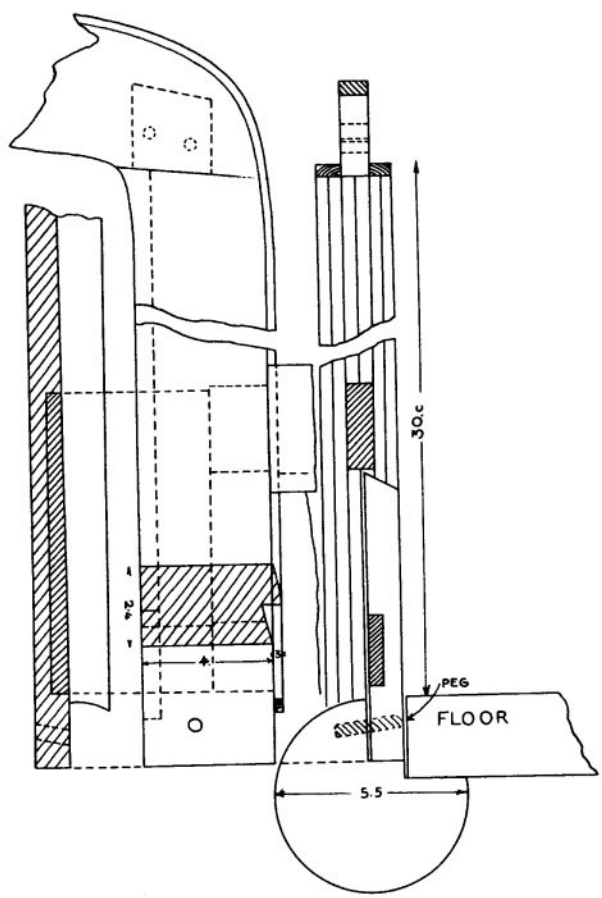
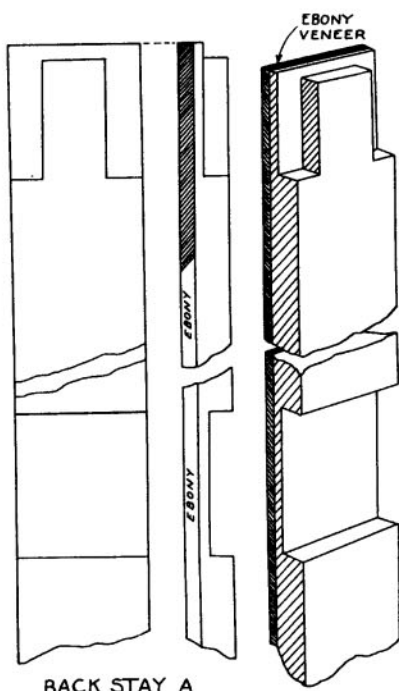
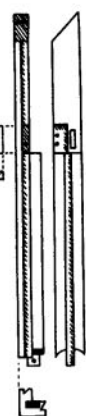
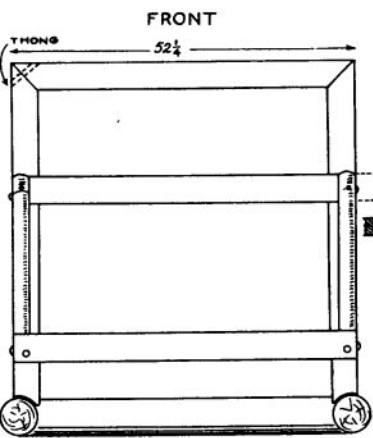
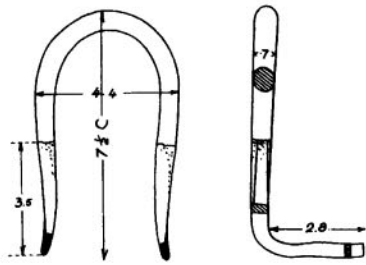
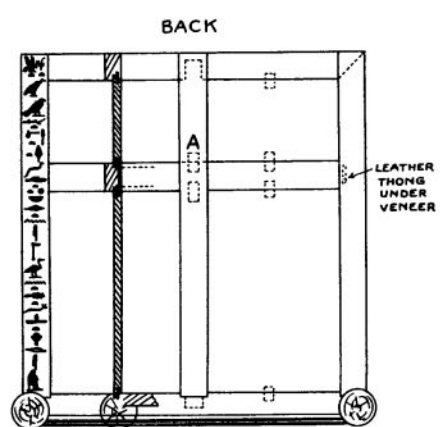


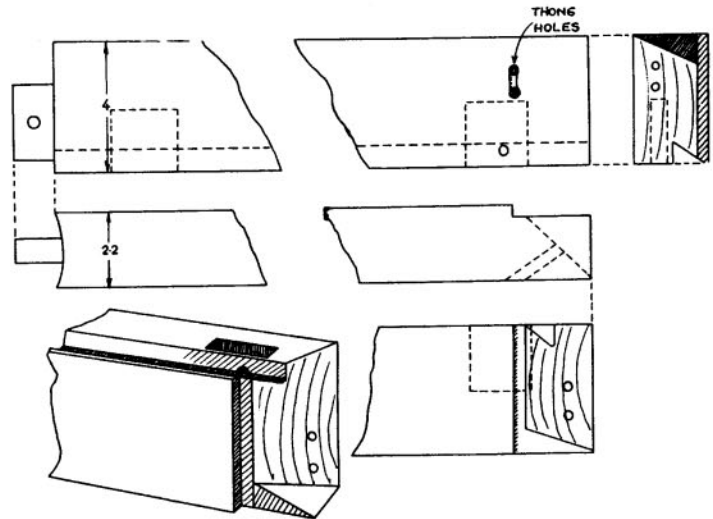
Fig. 34



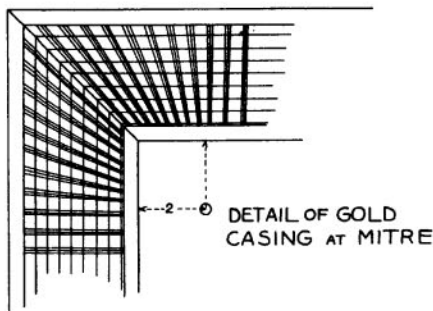
BACK STAY A



COPPER STAPLE



JOINTS OF SIDE BAR, A



W. A. Newbery  
11.1.1929.



Fig. 35

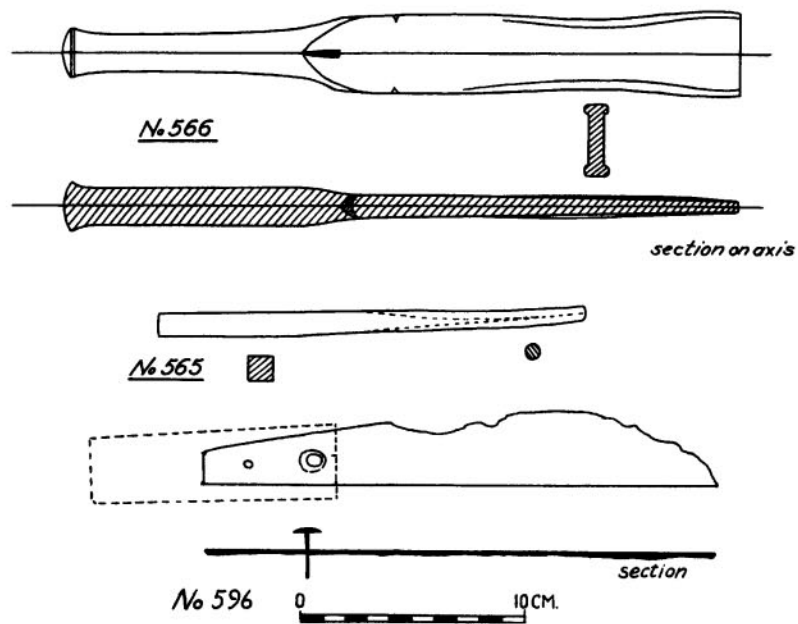


Fig. 36

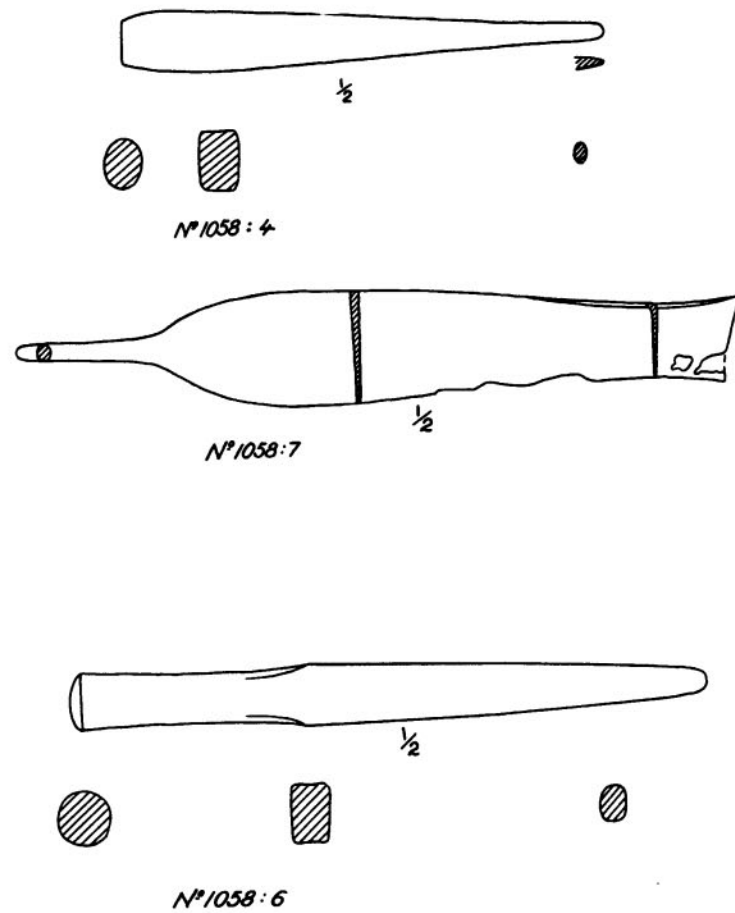
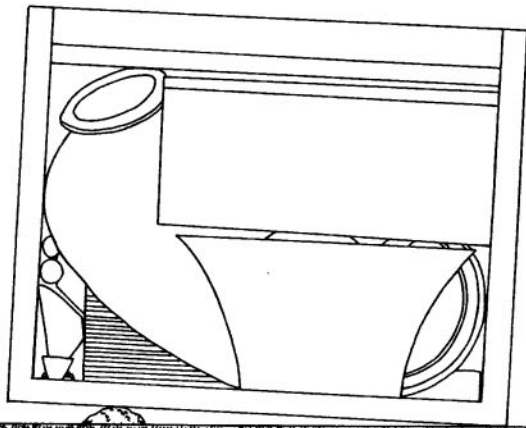
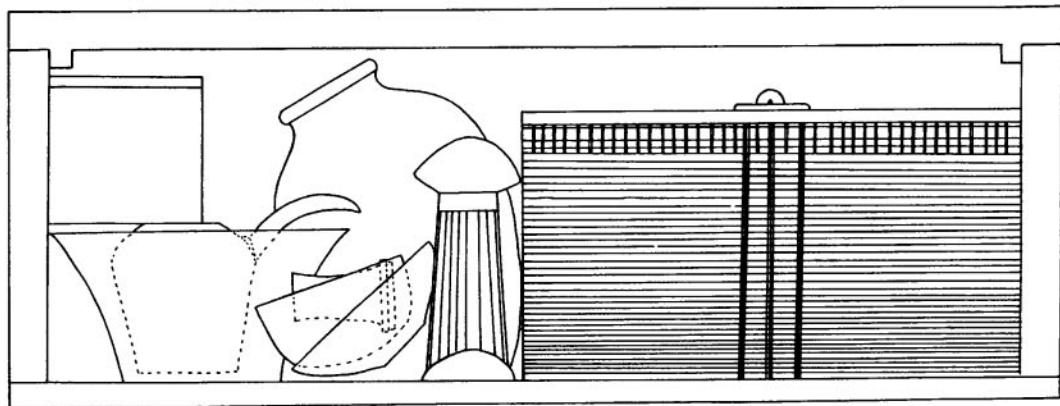


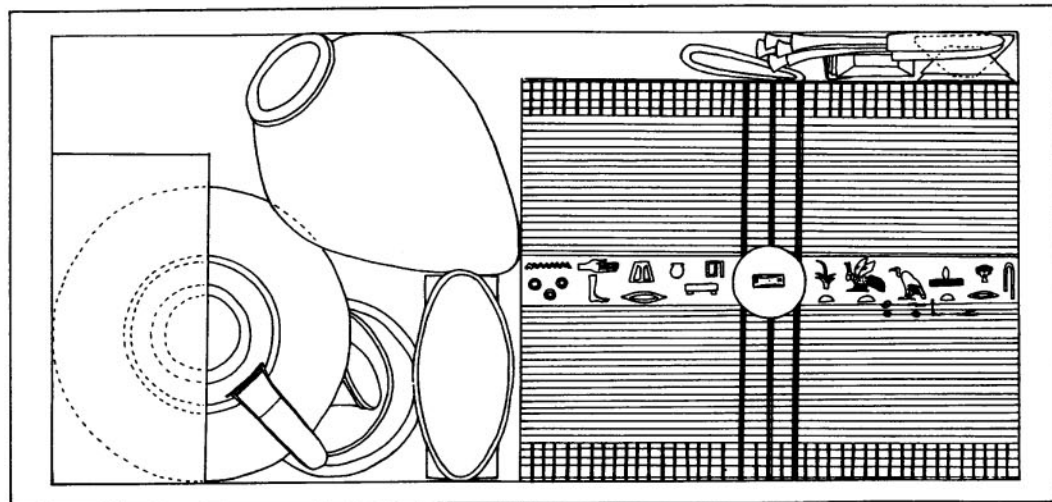
Fig. 37



0 1 2 3 4 5 6 7 8 9 10 11 12 13 14 15 16 17 18 19 20 21 22 23 24 25 26 27 28 29 30 31 32 33 34 35 36 37 38 39 40 41 42 43 44 45 46 47 48 49 50 51 52 53 54 55 56 57 58 59 60 61 62 63 64 65 66 67 68 69 70 71 72 73 74 75 76 77 78 79 80 81 82 83 84 85 86 87 88 89 90 91 92 93 94 95 96 97 98 99 100



0 1 2 3 4 5 6 7 8 9 10 11 12 13 14 15 16 17 18 19 20 21 22 23 24 25 26 27 28 29 30 31 32 33 34 35 36 37 38 39 40 41 42 43 44 45 46 47 48 49 50 51 52 53 54 55 56 57 58 59 60 61 62 63 64 65 66 67 68 69 70 71 72 73 74 75 76 77 78 79 80 81 82 83 84 85 86 87 88 89 90 91 92 93 94 95 96 97 98 99 100



**Fig. 38**

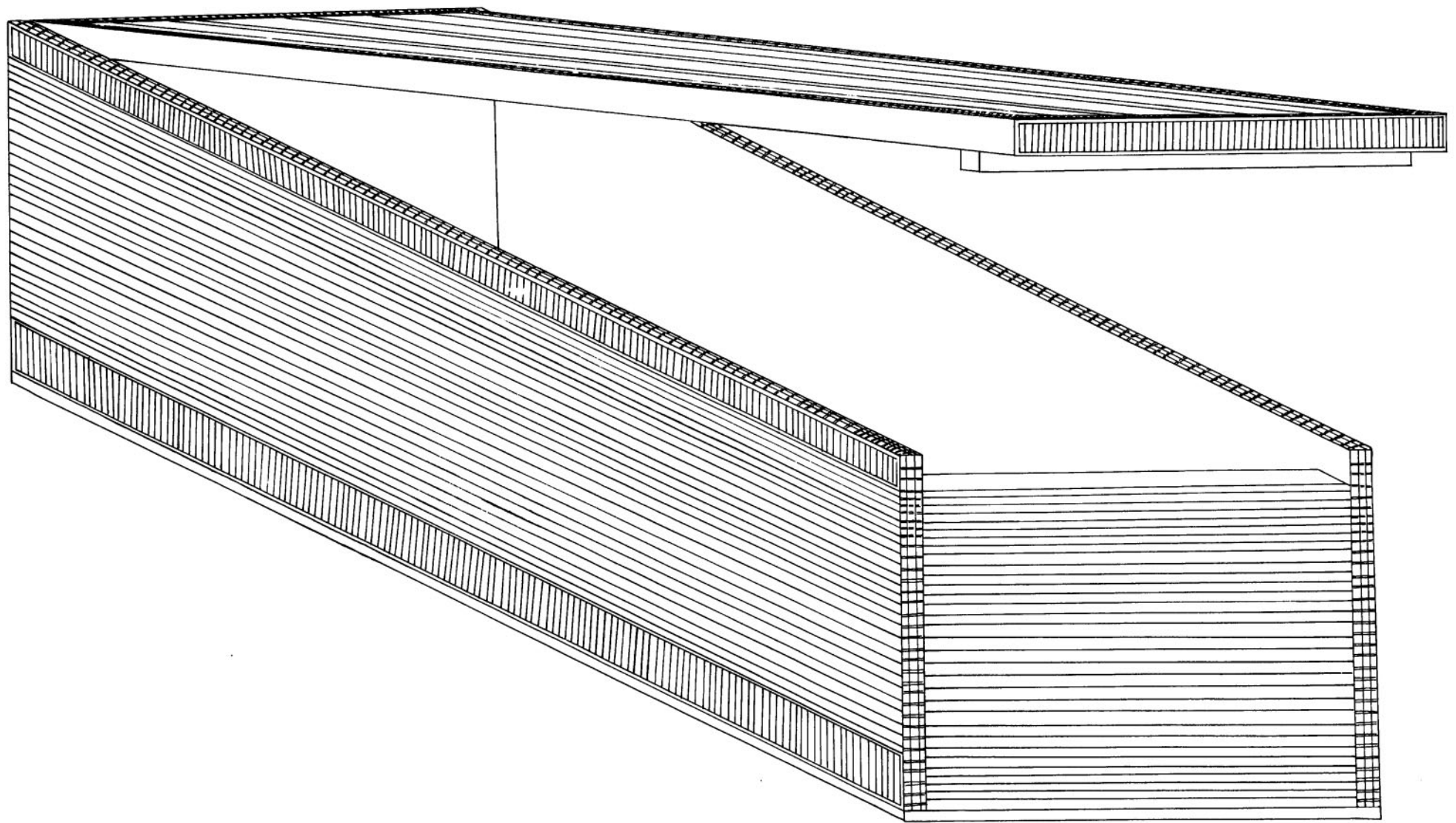


Fig. 39

1 2 3 4 5 6 7 8 9 10 cm.

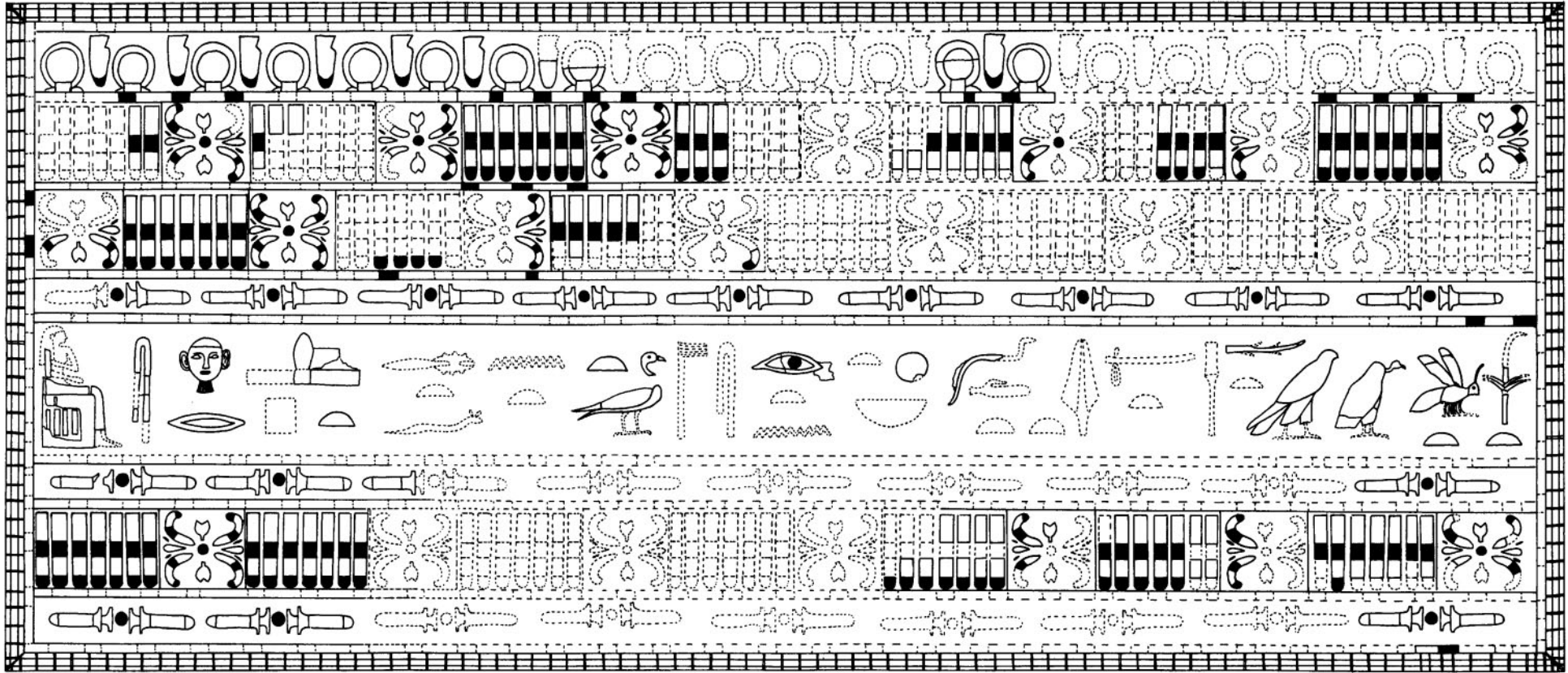


Fig. 40



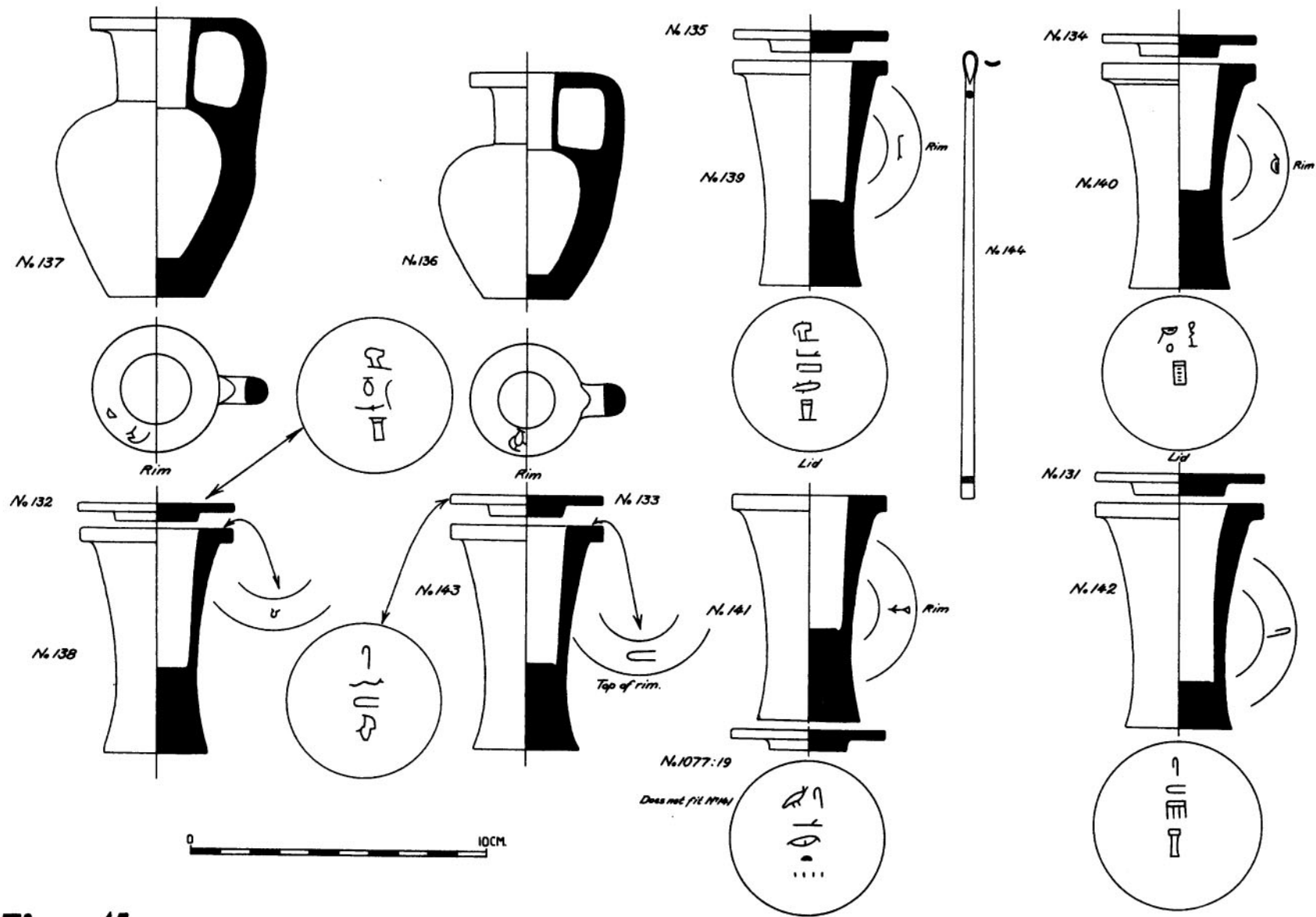


Fig. 41



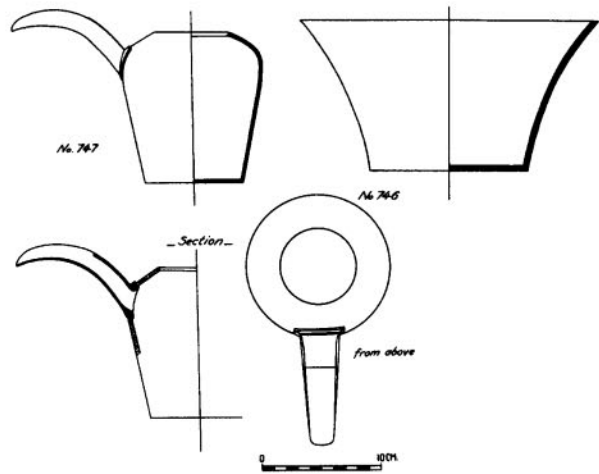


Fig. 42

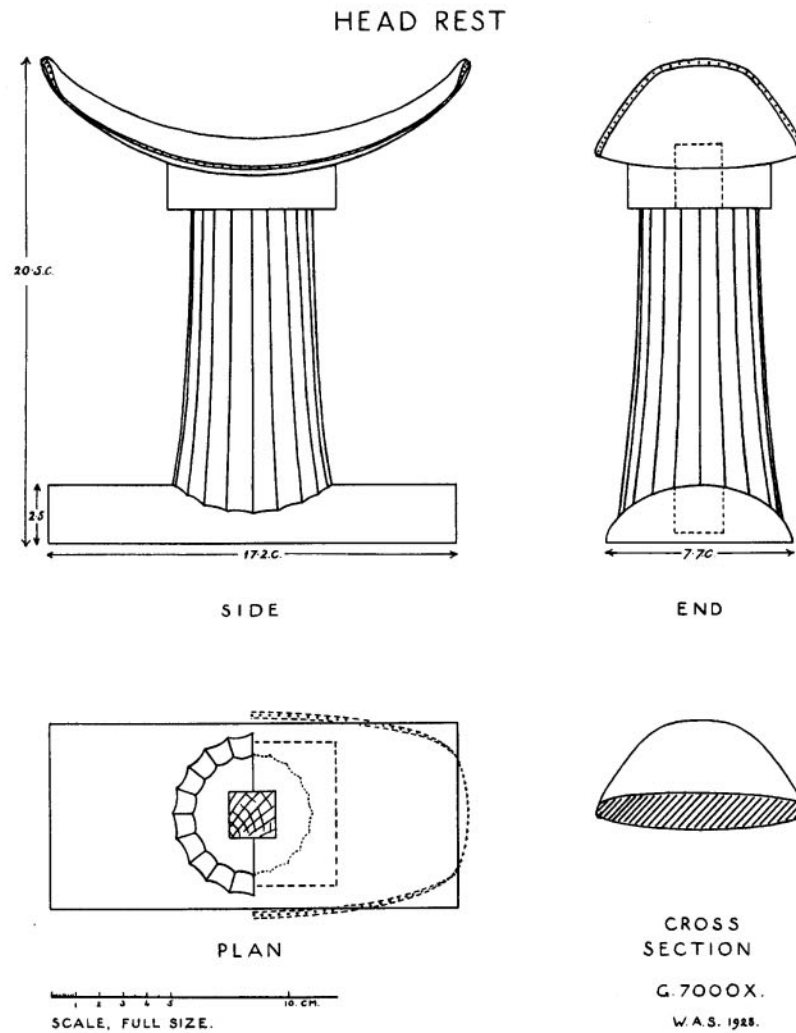


Fig. 43

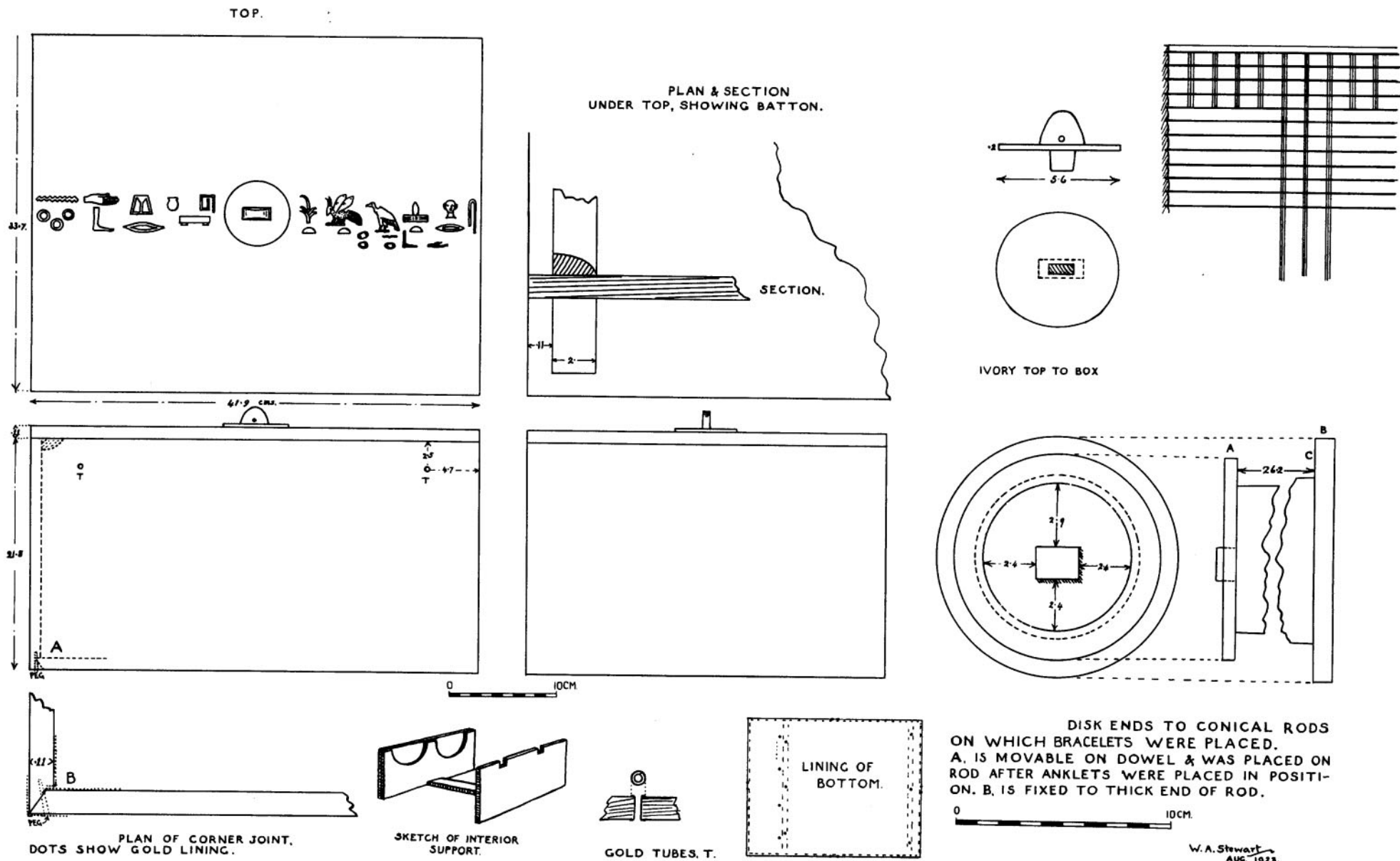


Fig. 44

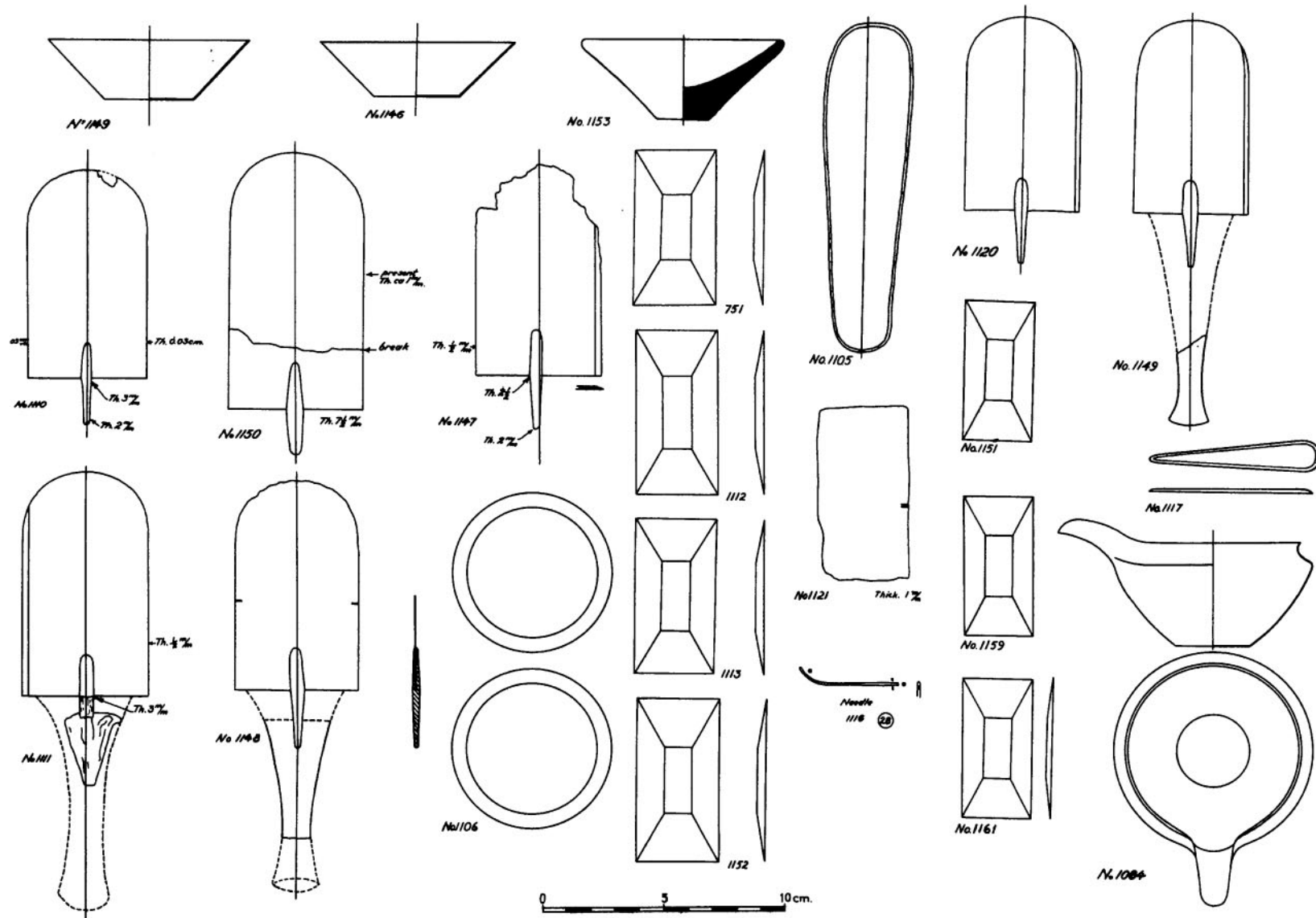


Fig. 45

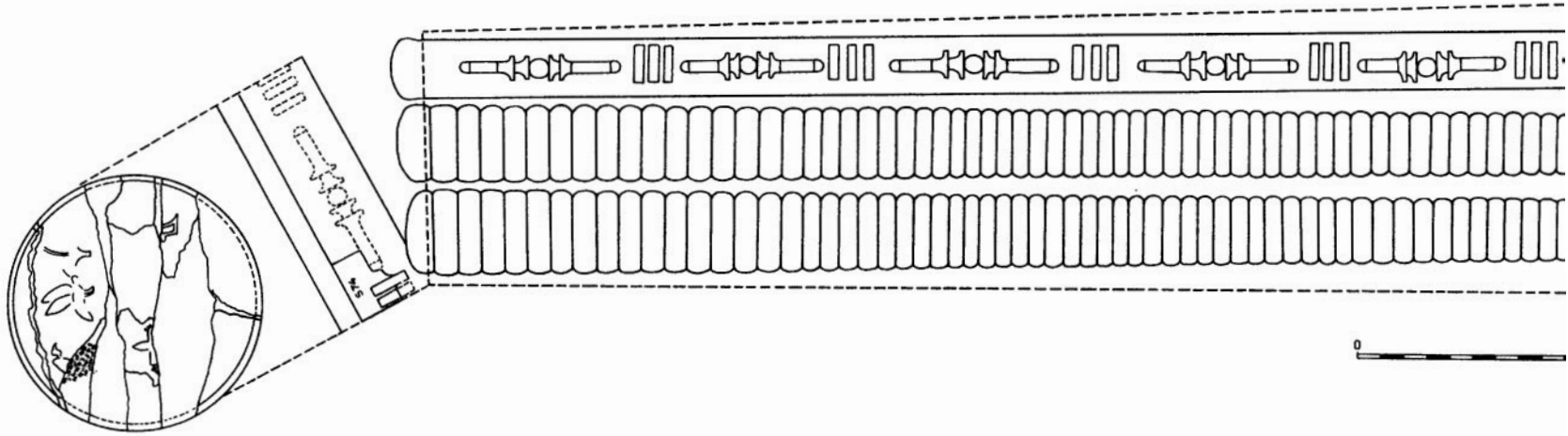
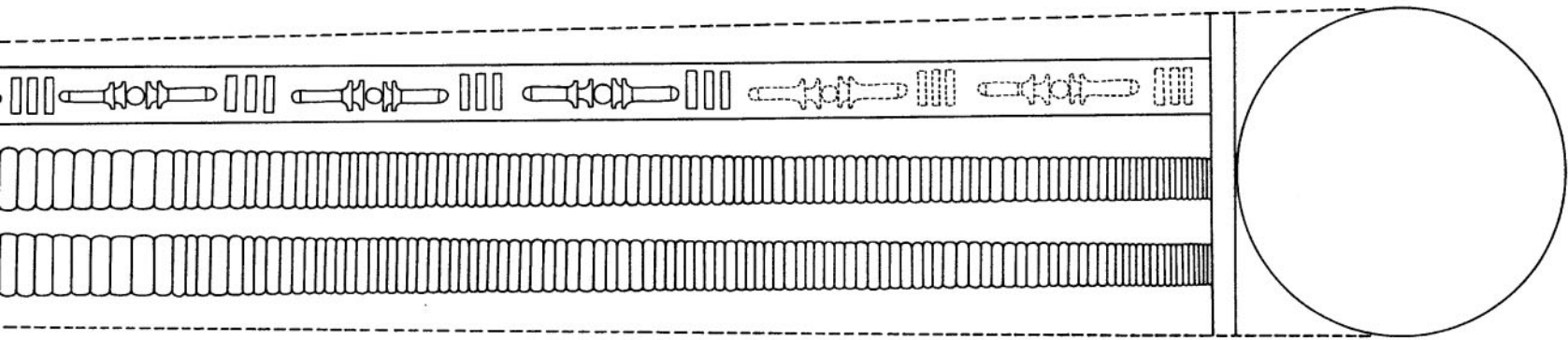


Fig. 46



10CM

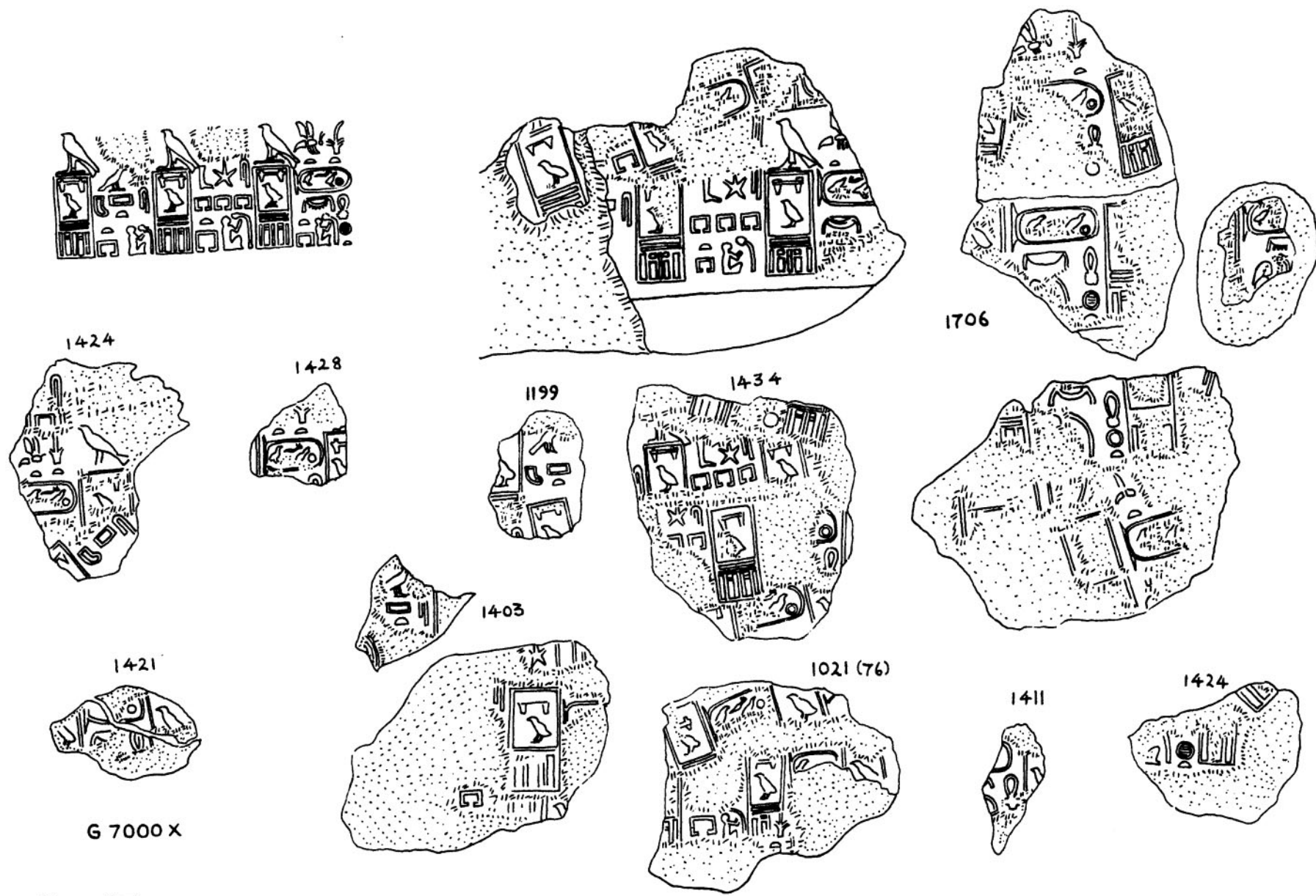
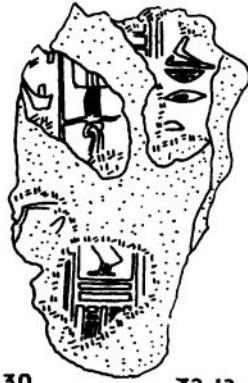


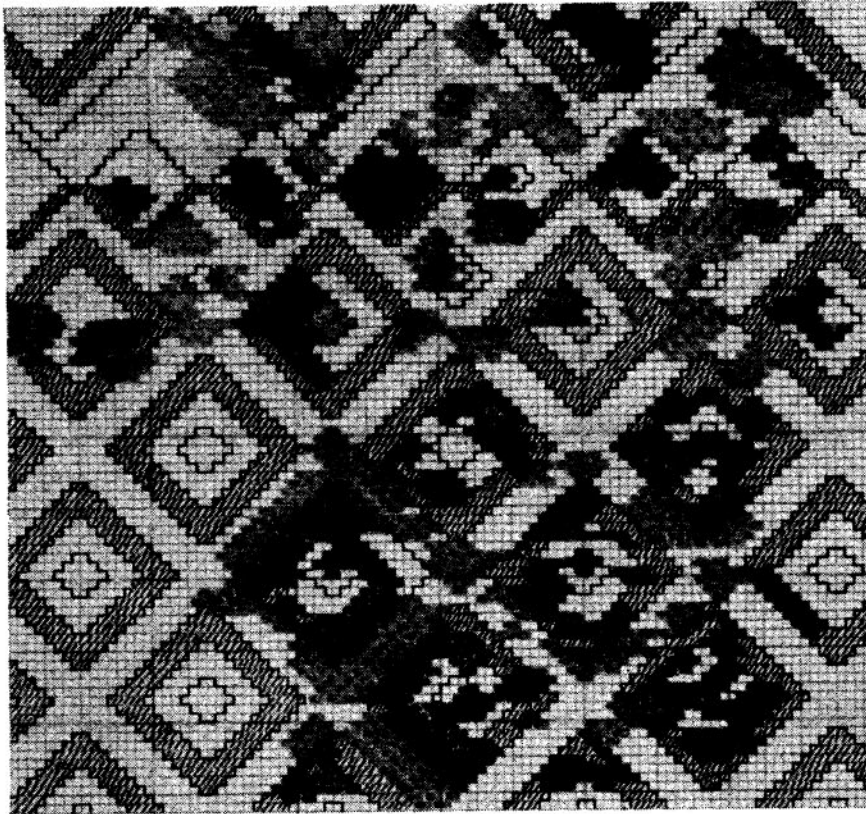
Fig. 47



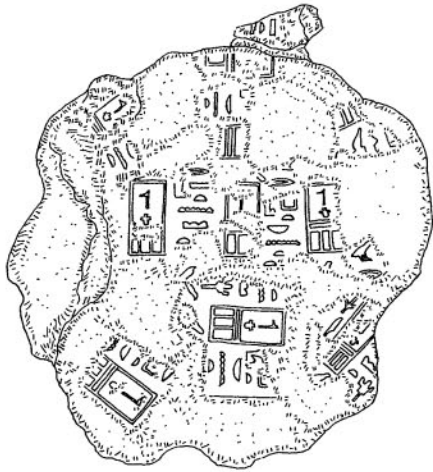
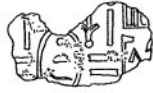
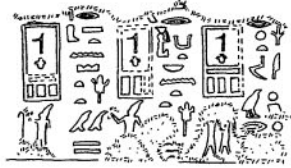
62130

32-12-6

**Fig. 48**



**Fig. 48a**



G 4430 A

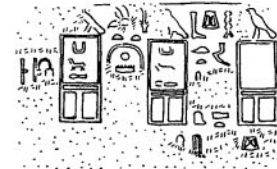
I3-2-4

Fig. 49



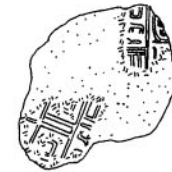
G 5080 B

33-2-223



G 5190 A

12-10-21



G 1457 A



34-12-8

Fig. 50



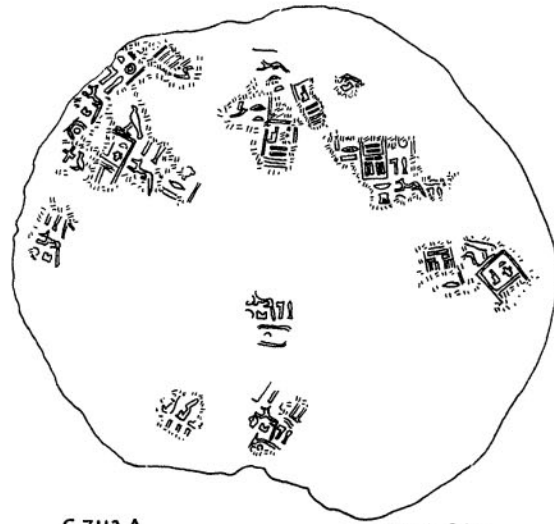


G 5080 B



33-2-151

Fig. 51



G 7112 A

25-1-963

Fig. 52



G 4631 B

14-1-34

Fig. 53

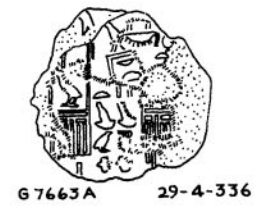
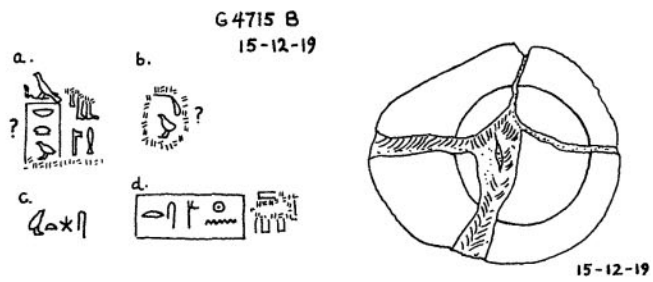


Fig. 55

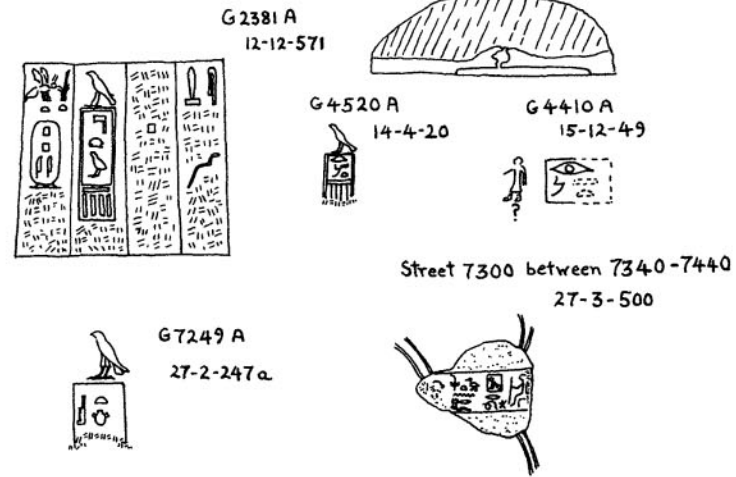


Fig. 54

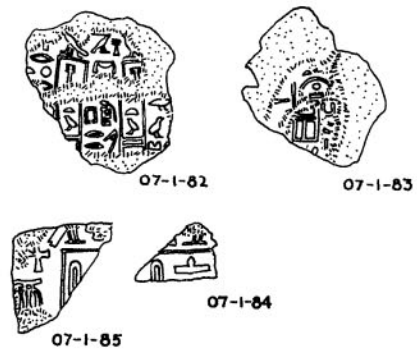
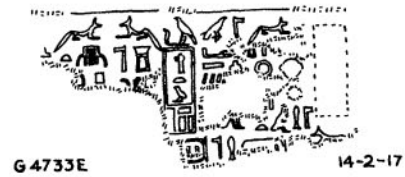


Fig. 56

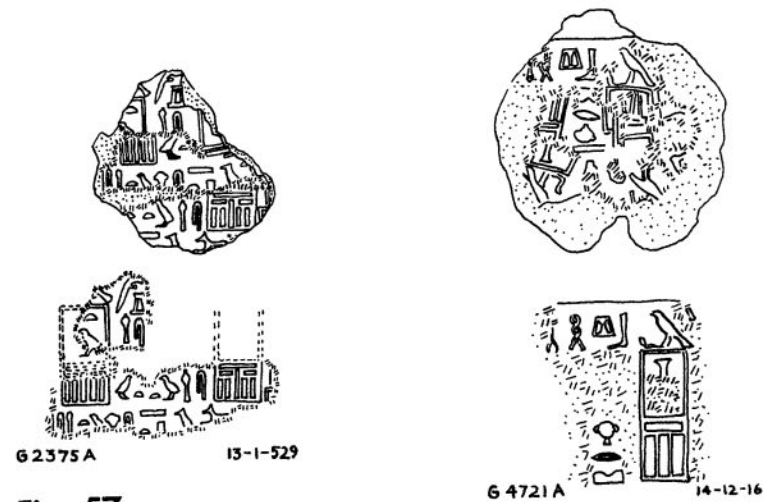


Fig. 57

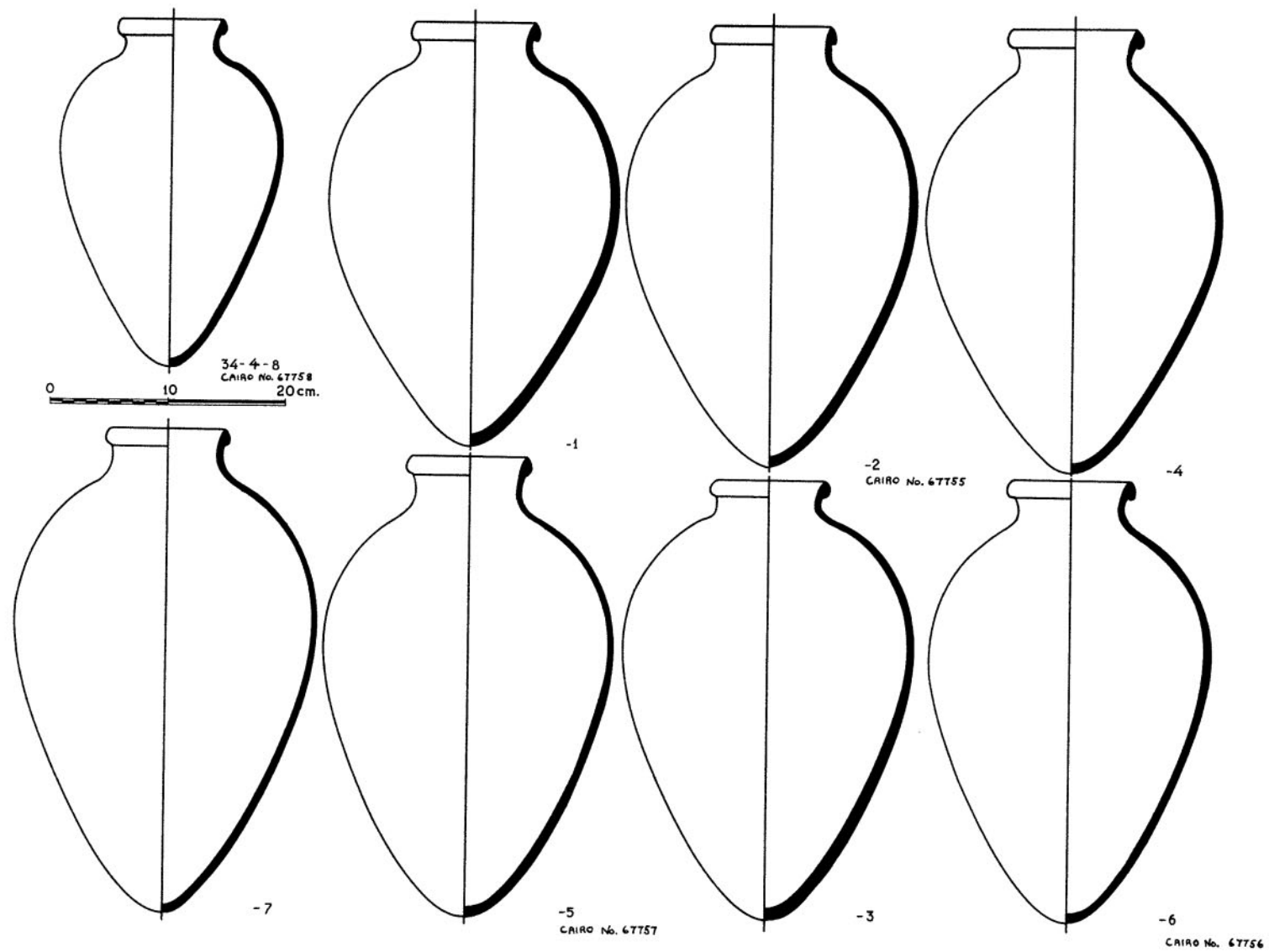


Fig. 58

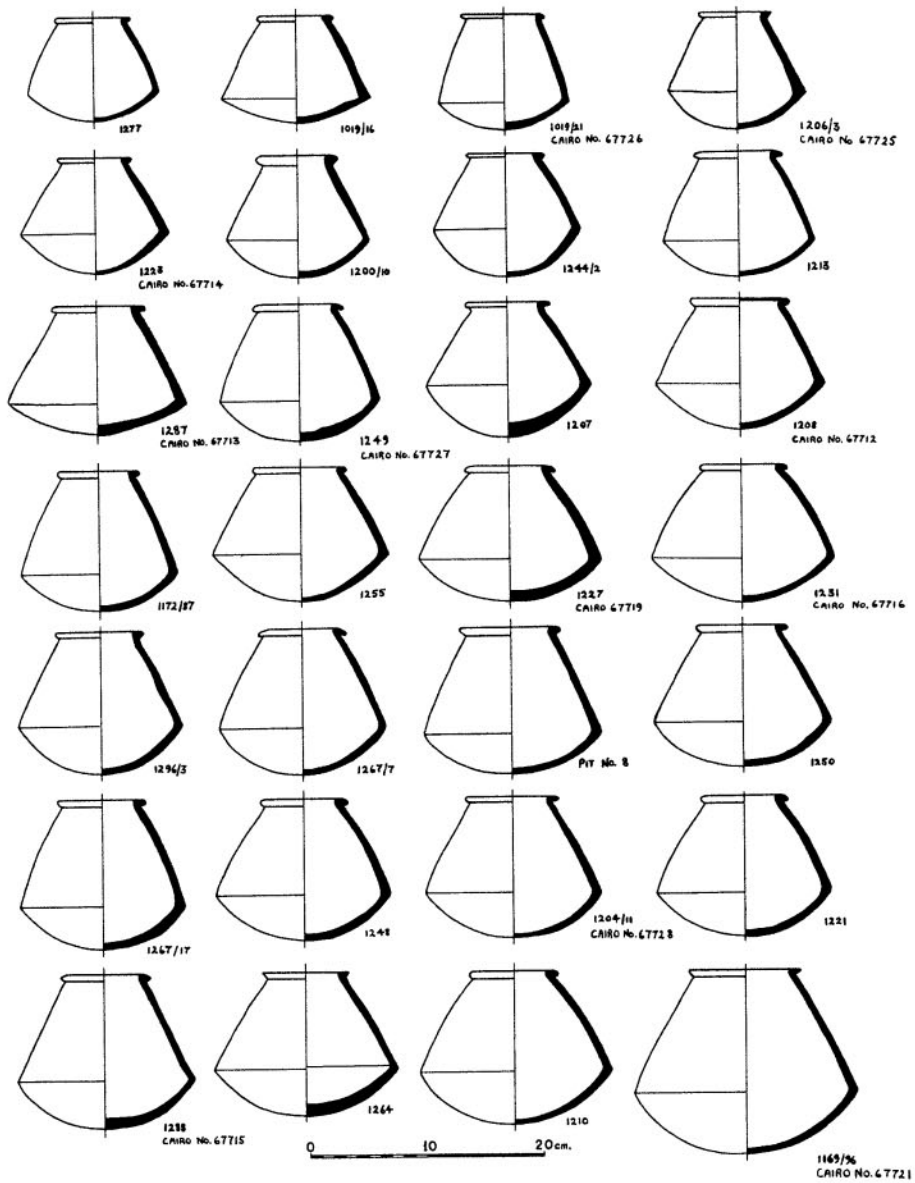


Fig. 59

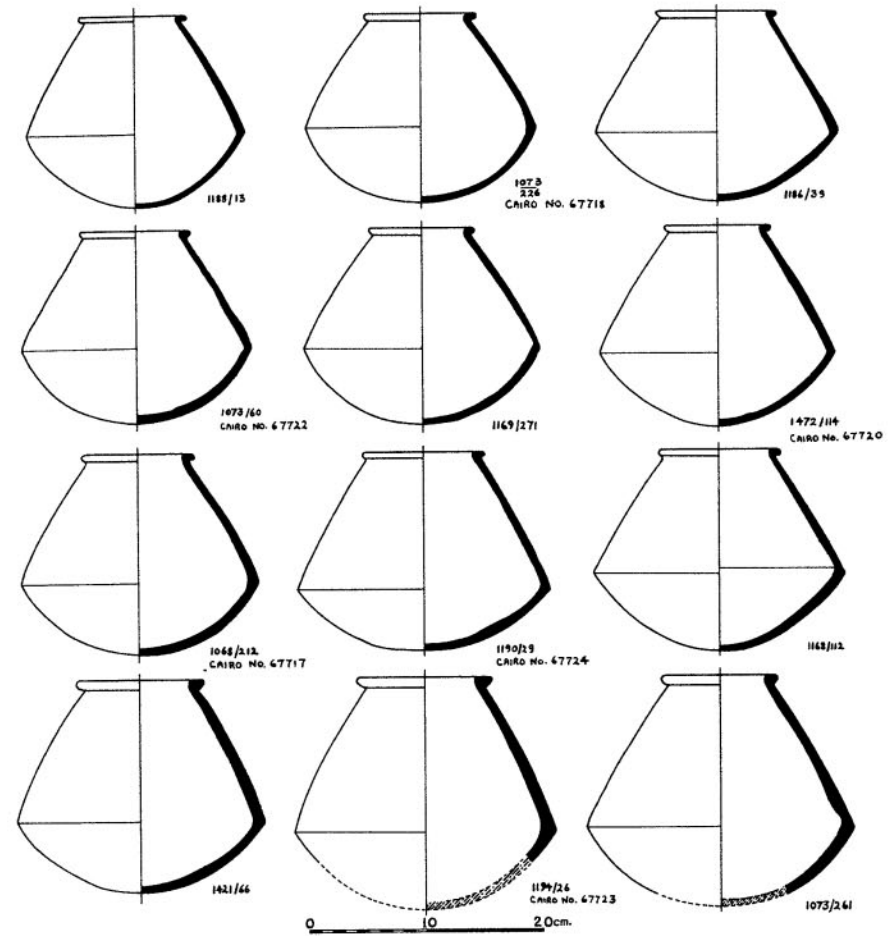


Fig. 60

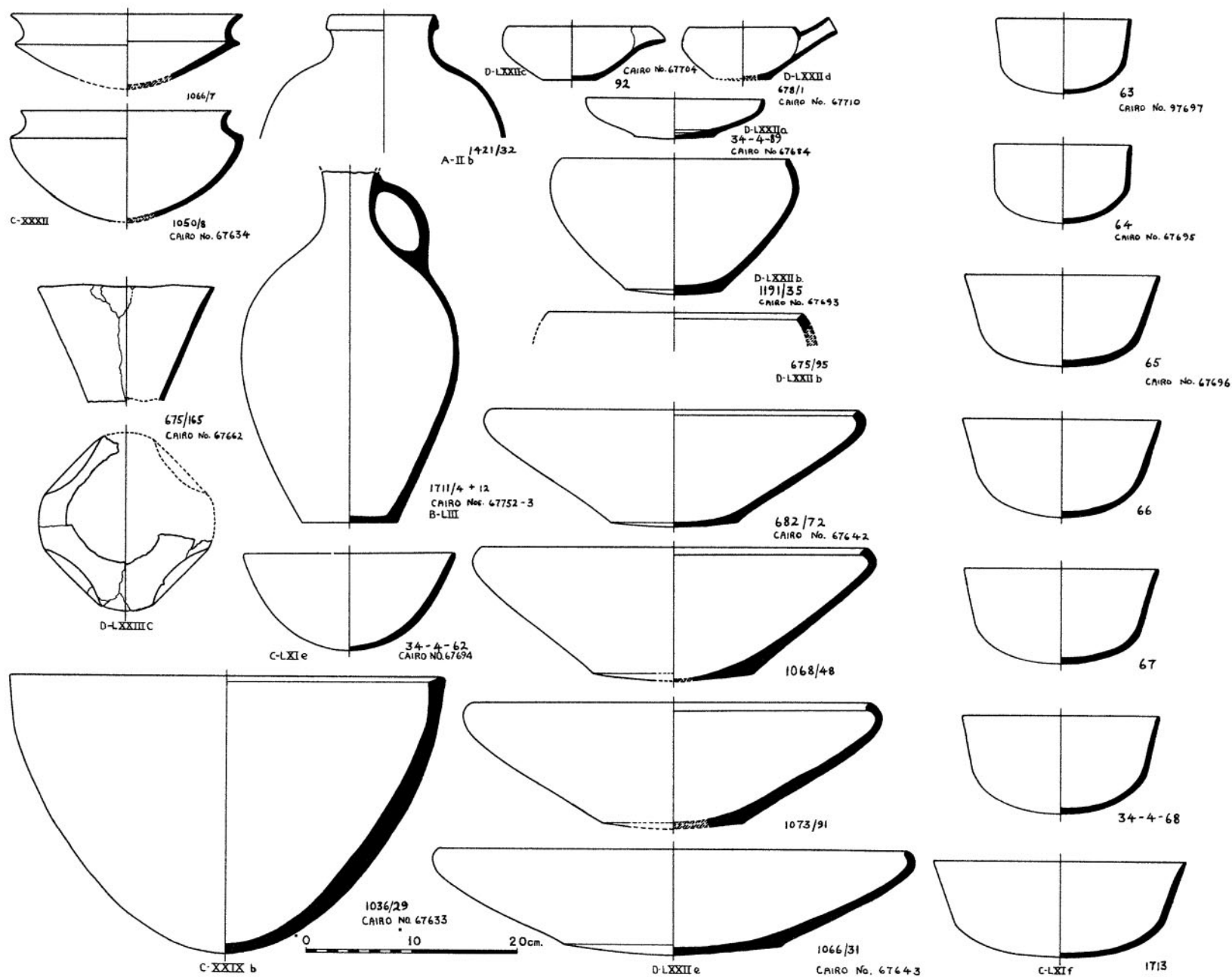


Fig. 61

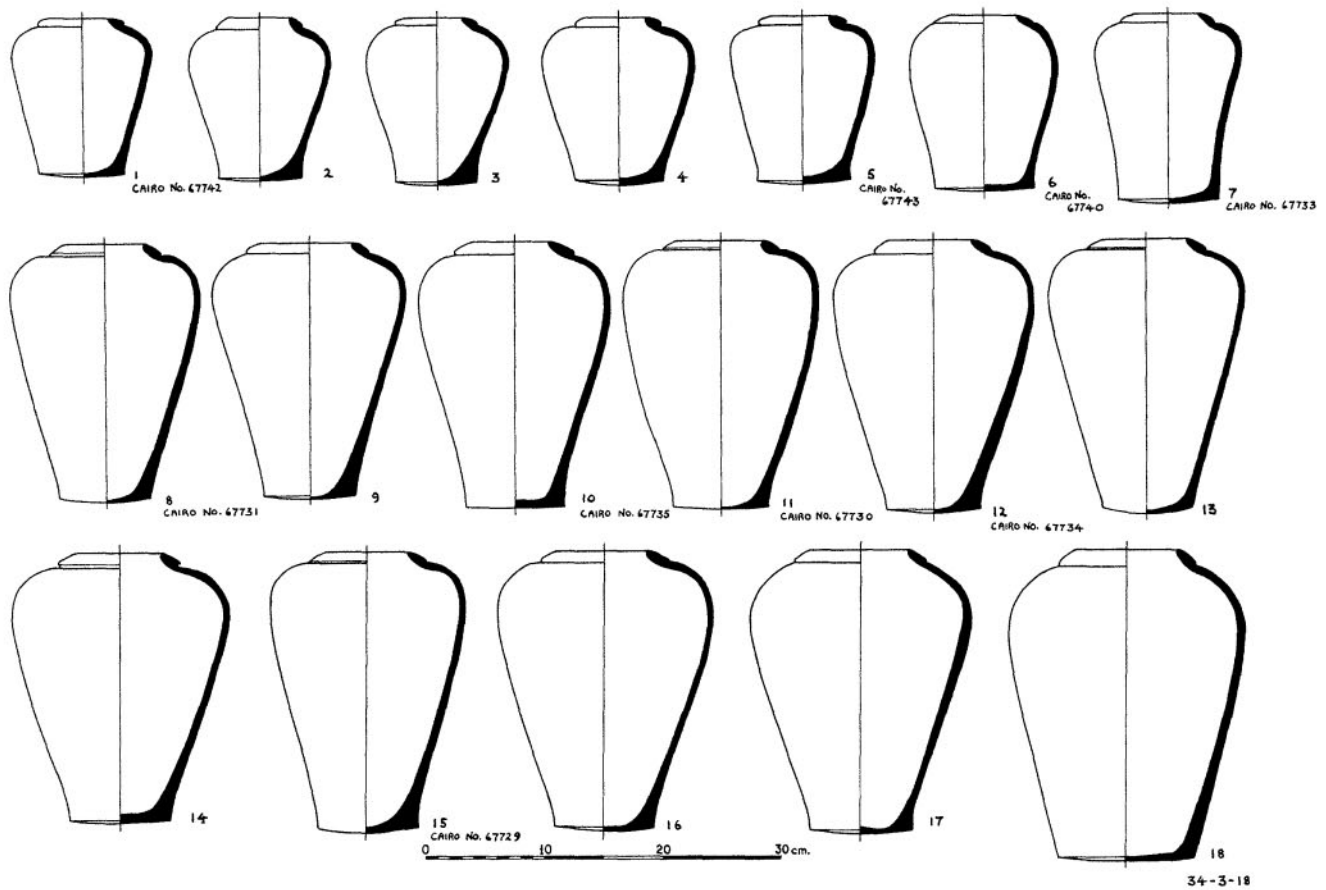


Fig. 62

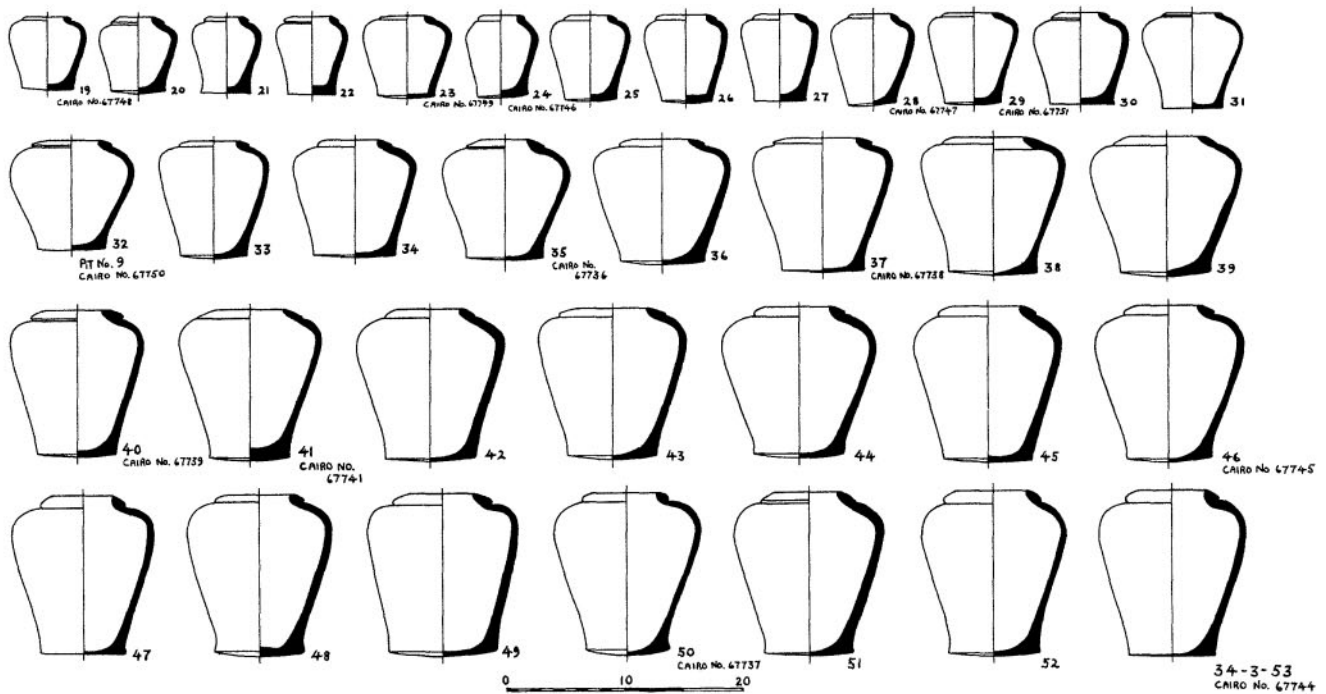


Fig. 63

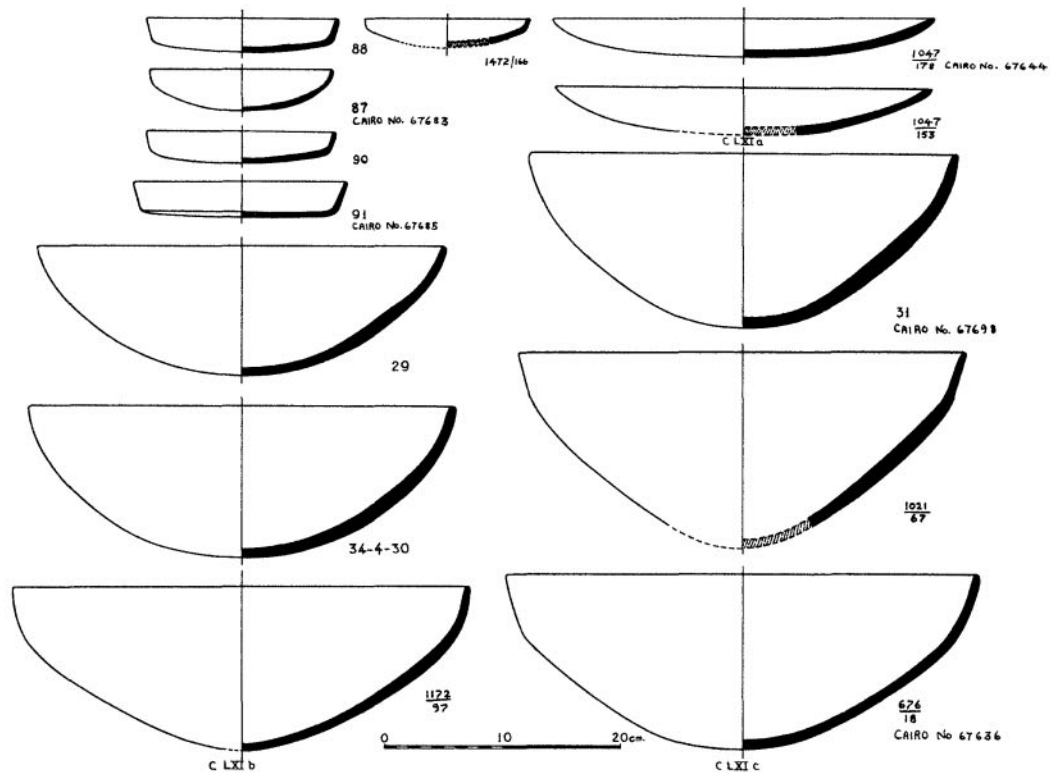


Fig. 64

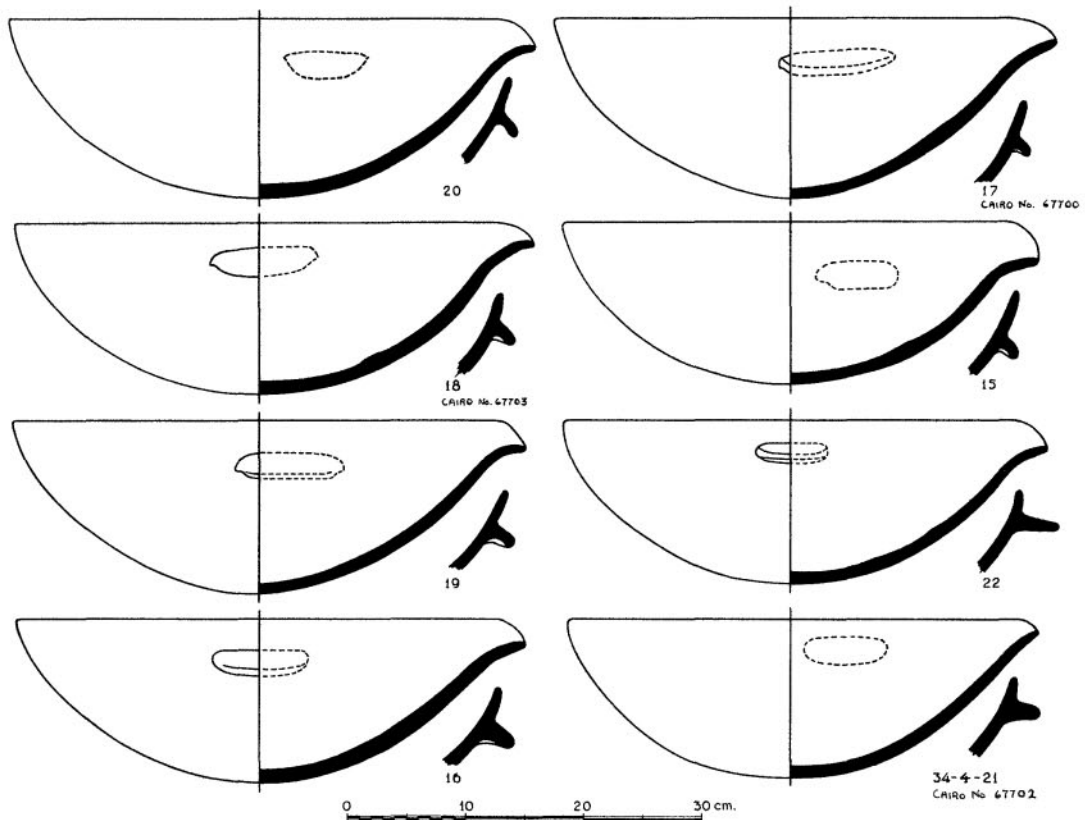
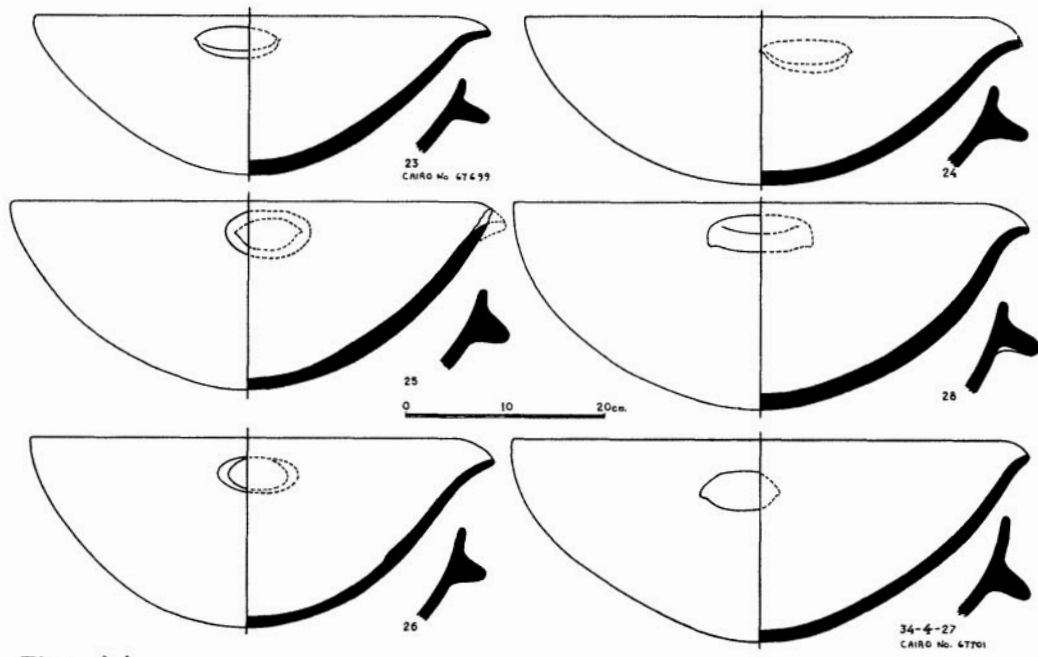
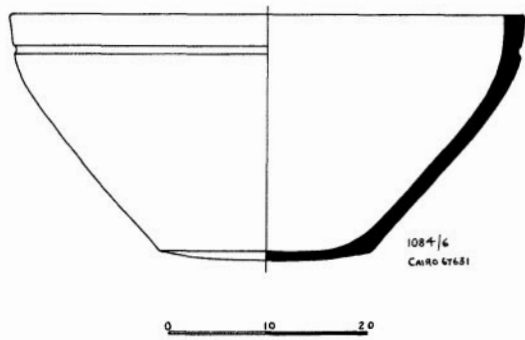


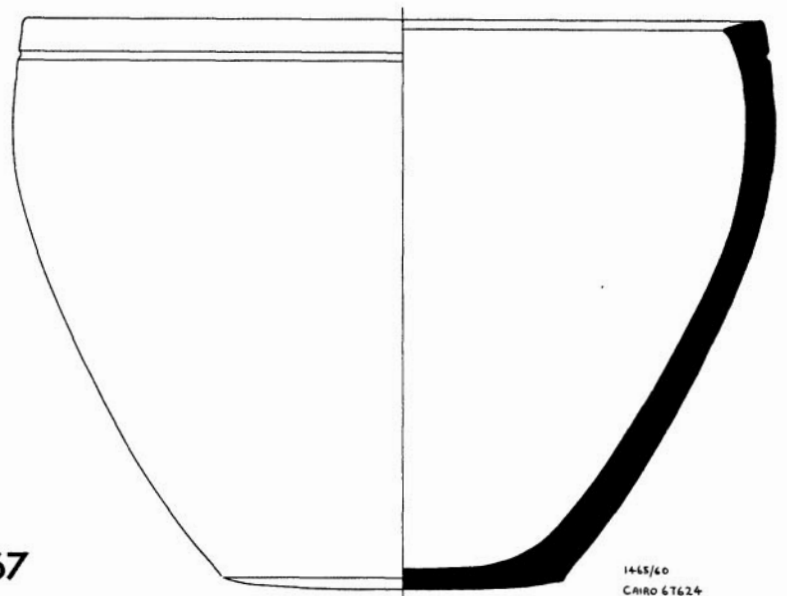
Fig. 65



**Fig. 66**



1084/6  
CAIRO 67651



1445/60  
CAIRO 67624

**Fig. 67**



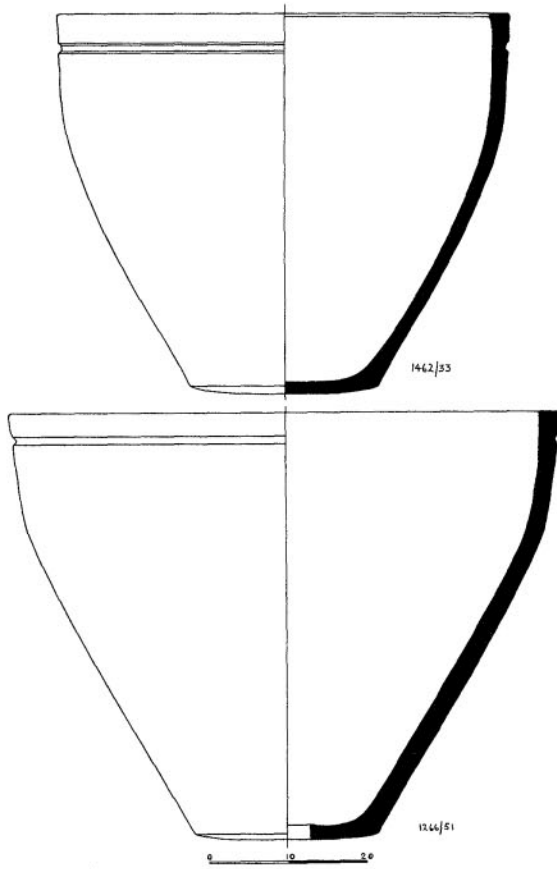


Fig. 68

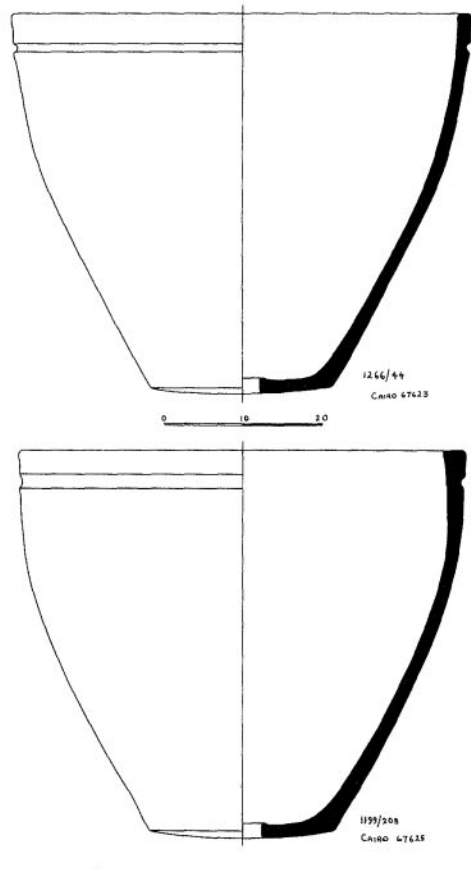


Fig. 69

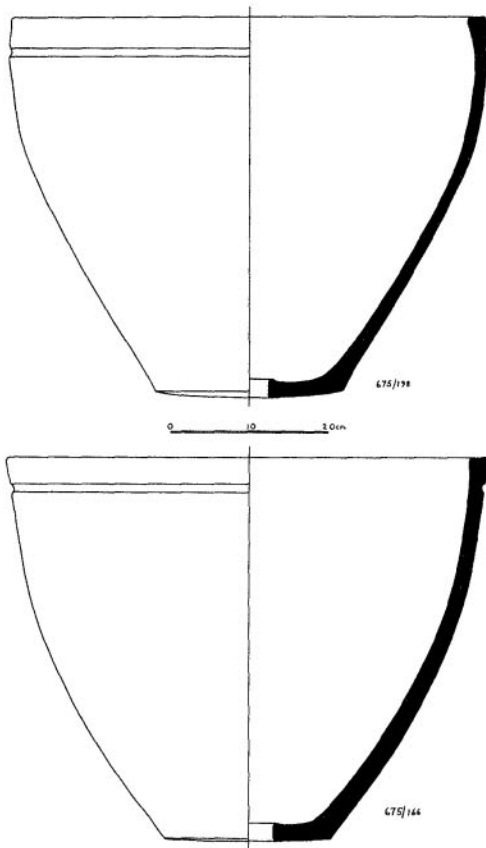


Fig. 70

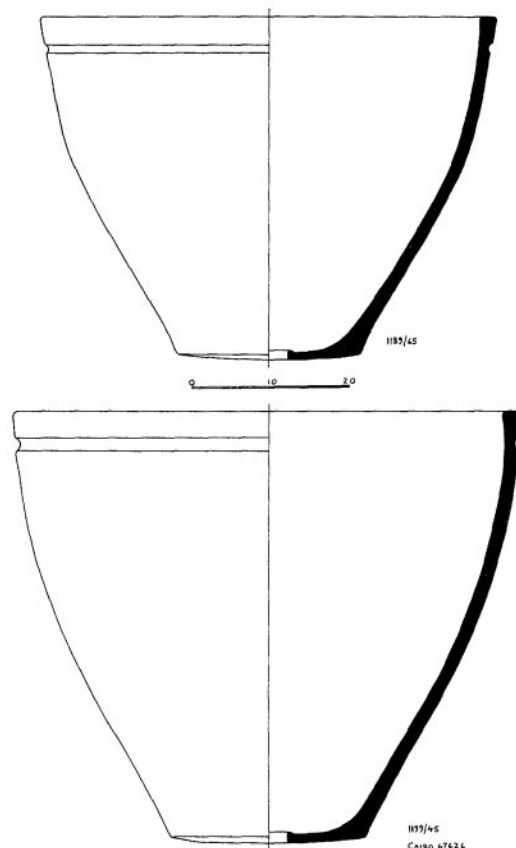


Fig. 71

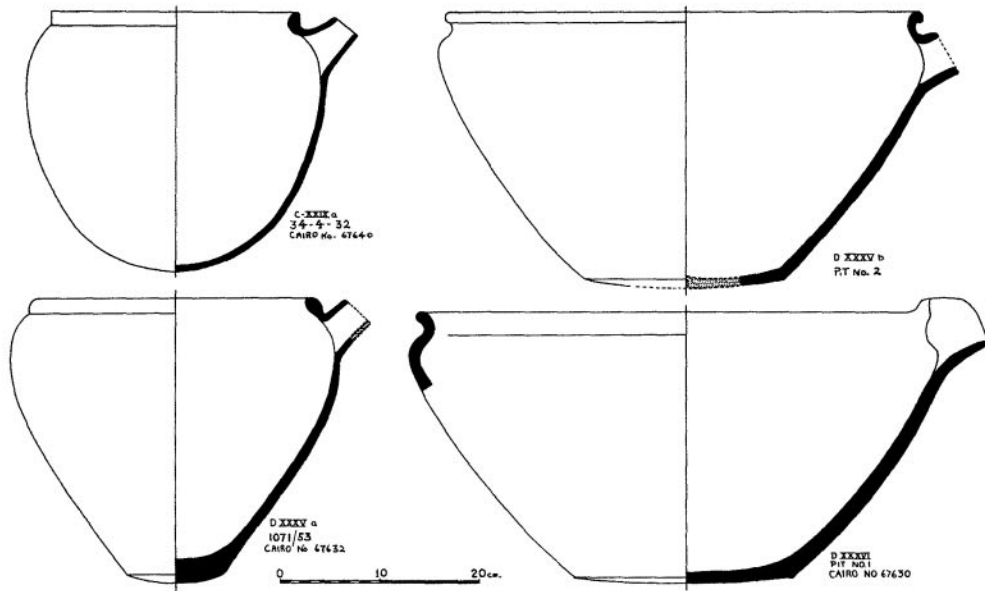


Fig. 72

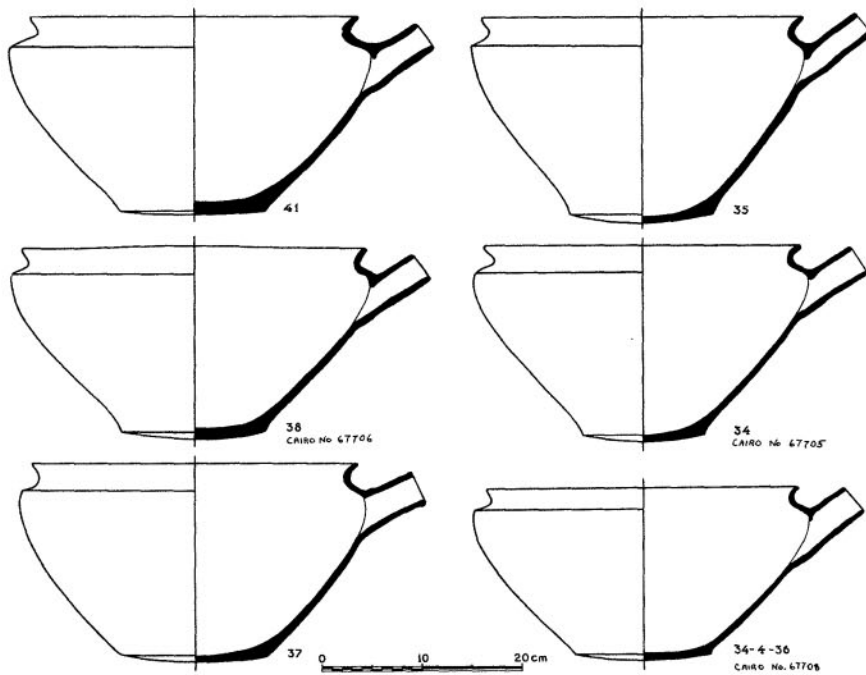


Fig. 73

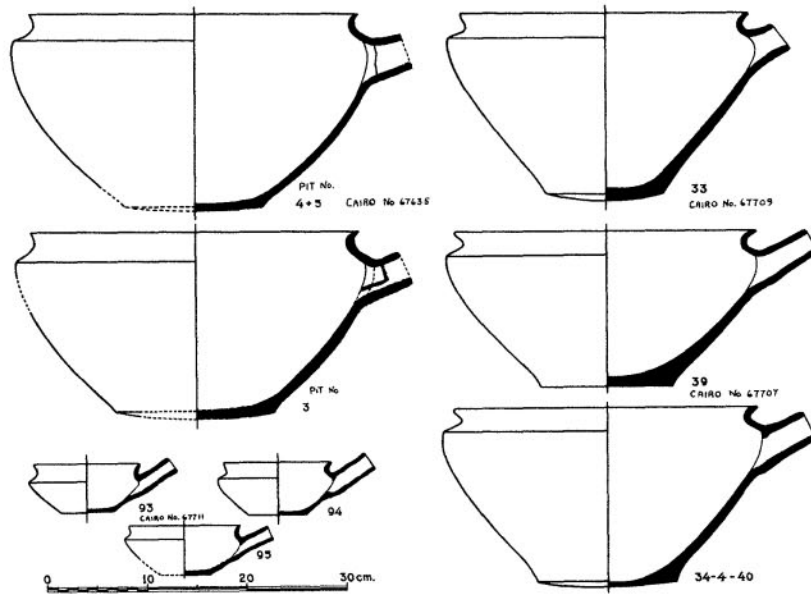


Fig. 74

11-3-37 N.M.

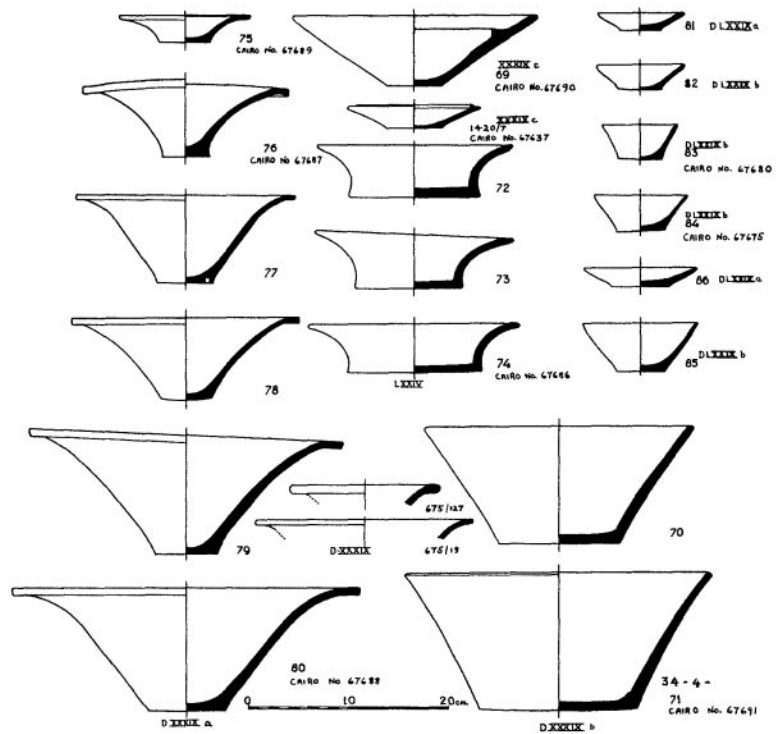


Fig. 75

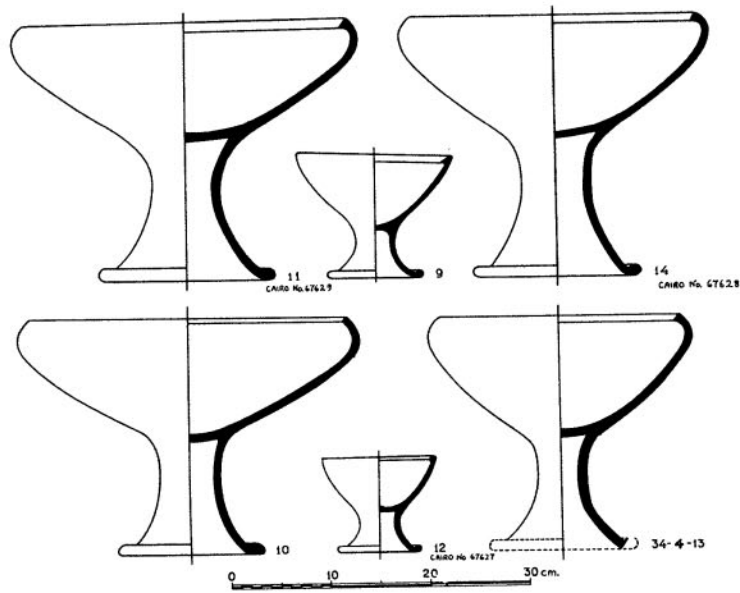


Fig. 76

4-3-30-30-30

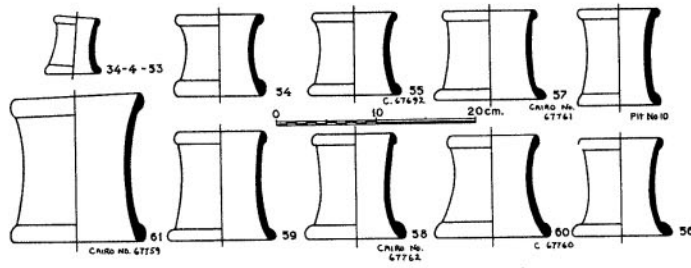


Fig. 77

13-P-31 A M

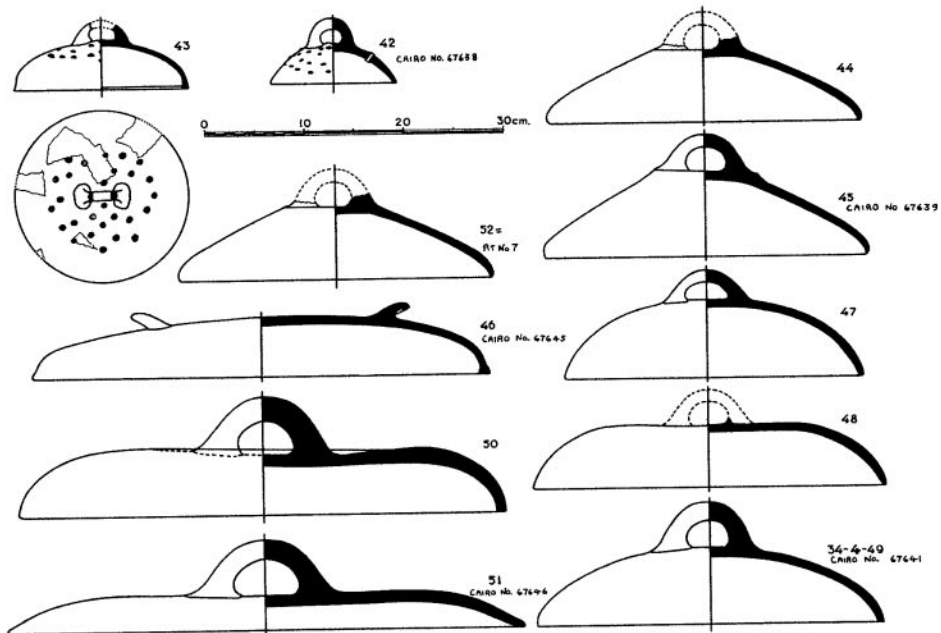
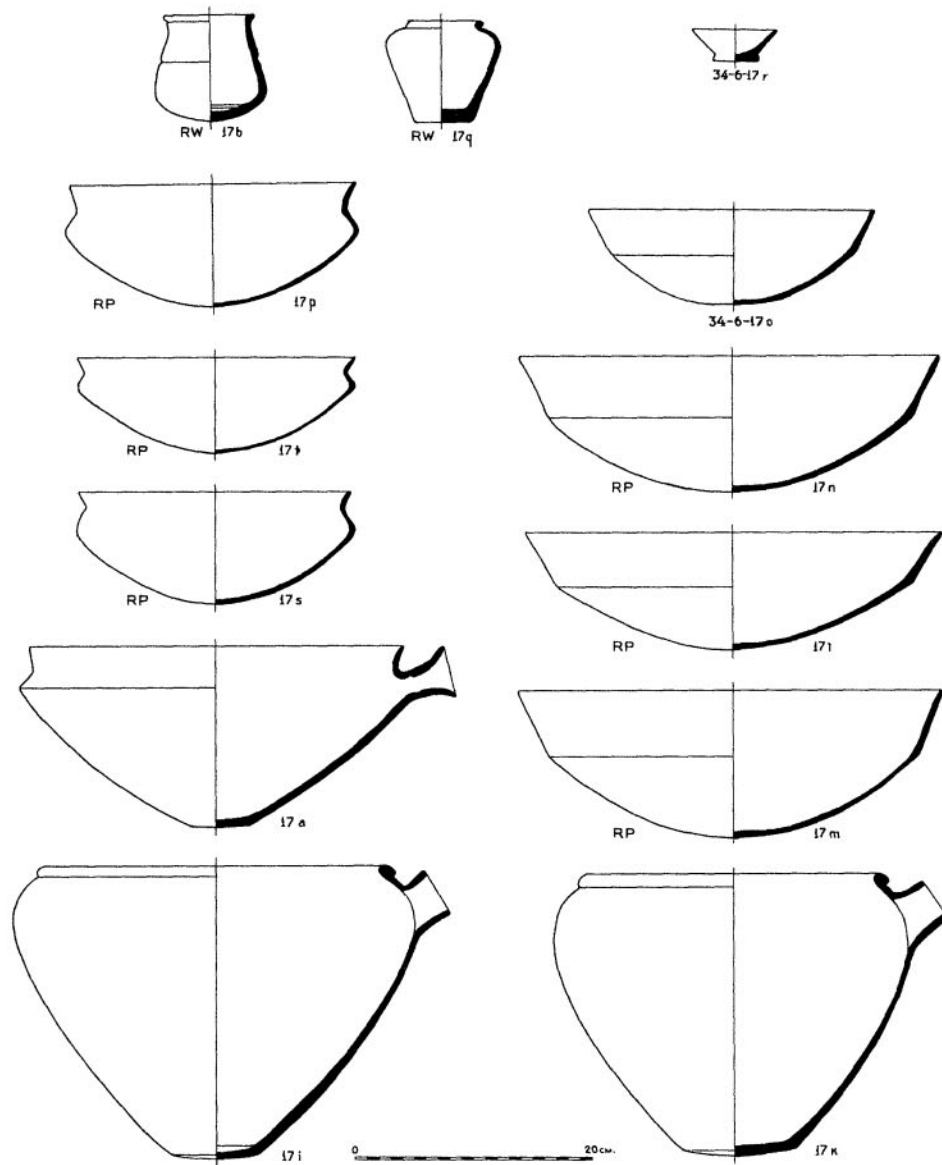
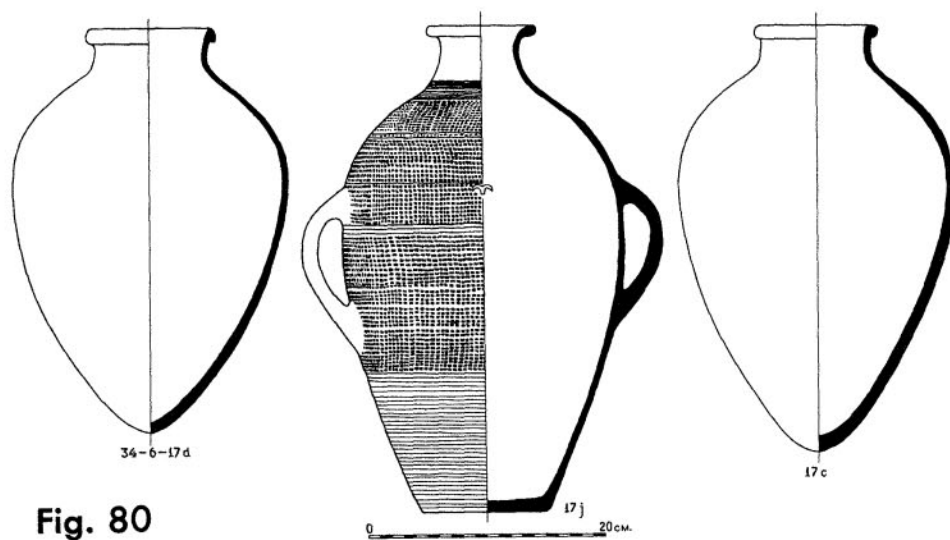


Fig. 78

7-3-37 N.M.



**Fig. 79**



**Fig. 80**

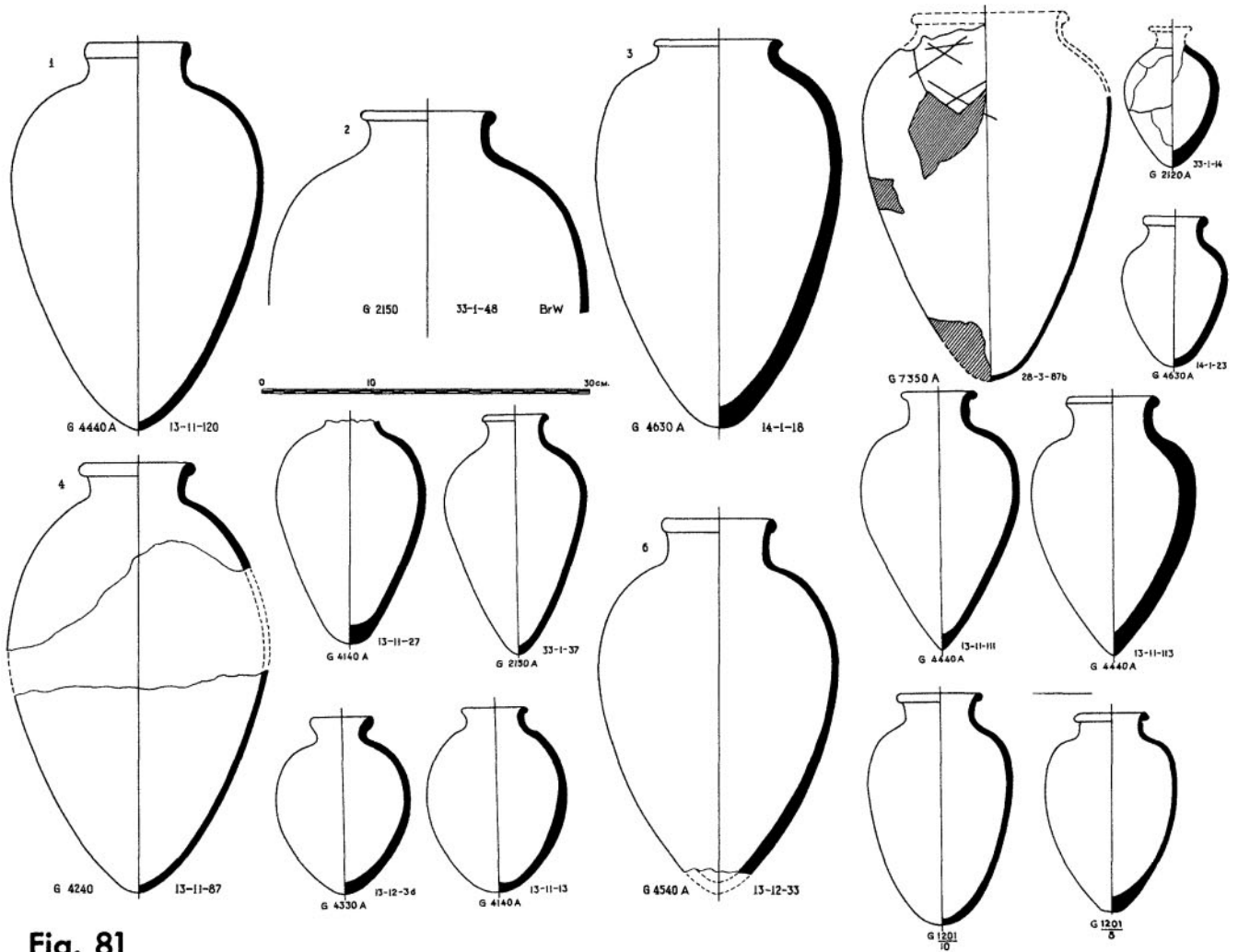


Fig. 81

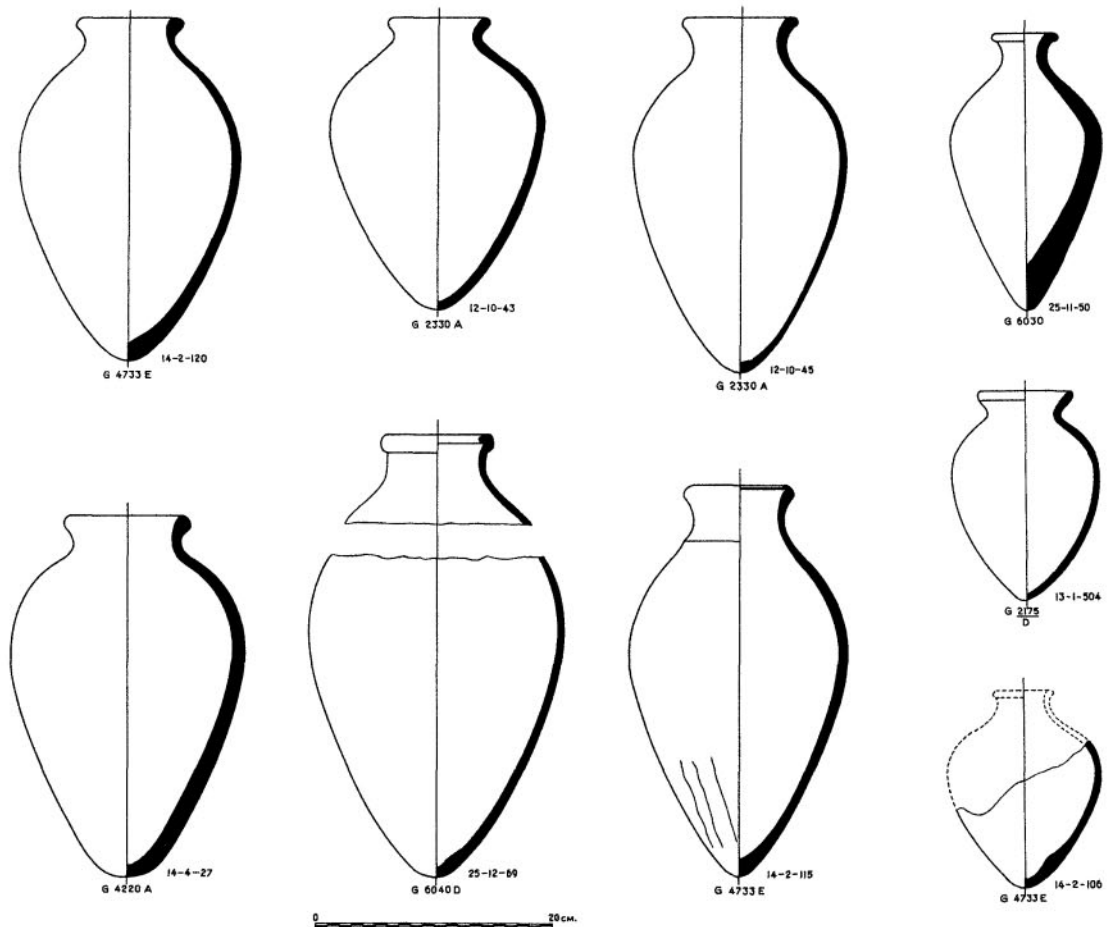


Fig. 82